



Access Canada

Property Standards Manual - 2007



Table of Contents

Criteria for the Levels of the Access Canada Property Standards	3
Section A Parking Areas and Passenger Loading/Drop-off Zones	4-8
Section B Entrances, Lobby and Reception	9-12
Section C Circulation Routes	13-19
Section D Doors	20-23
Section E Elevators	24-25
Section F Bars and Restaurants	26-27
Section G Meeting Rooms	28-29
Section H Business Centres	30
Section I Recreation Areas	31-32
Section J Guest Rooms and Suites	33-39
Section K Washrooms	40-48
Section L Information and Communication	49-50
Section M Signage	51-52
Section N Emergency Planning	53-55
Section O Miscellaneous	56
Appendix Illustrations	57-75



Criteria for the Levels of the Access Canada Property Standards

Level 1 - Basic access

Ability of people with disabilities with a range of different abilities to enter and access the various common areas and elements throughout the facility; and Basic use of facilities, as defined by the National Building Code (NBC) and by the Canadian Standards Association (CSA) document CAN/CSA B651-04: Accessible Design for the Built Environment. The NBC document was used to determine the scope and application, the CSA document was used to determine the design requirements.

Level 2 - Enhanced Access

Level 1 access plus:

- Enhanced use of facilities, offering customers choices which better accommodate their individual preferences and abilities;
- Americans with Disabilities Act (ADA) compliance; and
- Access to some facilities may require some assistance.

Level 3 - Superior Access

Level 2 access plus:

- Superior use of facilities, offering customers many choices which better accommodate individual preferences and abilities;
- Some enhancement of space standards; and
- Access to some facilities may require some assistance.

Level 4 - Optimal Access

Level 3 access plus:

- Optimal use of facilities, offering customers a wide range of choices which better accommodate individual preferences and abilities.
- Based on current best practices;
- Space standards optimized to accommodate larger mobility devices; and
- Independent access throughout the facilities.

* Please note: dimensions are in mm unless otherwise indicated.

Parking Areas and Passenger Loading/Drop-Off Zones

RATIONALE

Parking

The provision of parking spaces near the entrance to a facility is important to accommodate persons with a variety of disabilities. People with disabling conditions, such as arthritis or heart conditions, who need to use crutches or push a wheelchair find it difficult to travel long distances. Minimizing travel distances is particularly important outdoors, where weather conditions and ground surfaces can make travel both difficult and hazardous.

Routes of Travel

The accessible route of travel connecting the parking to the entrance should be well marked and free of steps and curbs. People who are mobility impaired may use cars or vans. Consequently, accessible parking spaces should accommodate both. A person using a wheelchair requires a wider parking stall to accommodate the positioning of the wheelchair beside the car or van. Additionally, the van may incorporate a lift or ramp. These lifts or ramps are often deployed through the side door of the van, but may alternatively be installed in the rear of the vehicle. The person with a disability will require space not only for the lift itself but additional manoeuvring space to access the lift platform

in the lowered position. Vans are typically modified to accommodate equipment and functional needs. The height of a van may be increased through modifying the roof, resulting in the need for additional overhead clearance. Alternatively, the floor of the van may be lowered, resulting in lower tolerances for speed bumps and pavement slope transitions.

Passenger-loading Zones

Passenger-loading zones are an important feature for people who may have difficulty in walking long distances. Spatial requirements for side-loading wheelchair lifts must be accommodated.

Curb Ramps

Curb ramps should be well-designed to facilitate ease of use and safety. Slopes should be minimal and the inclusion of flared sides will minimize the hazard of pedestrians stepping off an edge. While smooth transitions between the sidewalk and pavement are ideal for someone in a wheelchair, they are a potential hazard to people who are visually impaired who may not notice the transition. Consequently, textured warning surfaces are an important safety feature of curb ramps.

Detectable Warning Surfaces

Detectable warning surfaces provide important cues for people with a visual impairment to navigate an environment. These surfaces alert a person with a visual impairment to potential hazards, such as crosswalks or stairs. Suitable surfaces include a change in texture and high colour contrast but they should not create a tripping hazard. Detectable warning surfaces should be used consistently throughout a facility.

Basic access (Level 1) for Parking Areas and Passenger Loading/Drop-off Zones is achieved when the accessible parking spaces meet minimum dimensional requirements for standard manual wheelchair users, are located outdoors and the facility features an outdoor drop off area. Higher access levels are achieved through the provision of larger parking spaces to better accommodate van users, the provision of contrasting coloured and textured surfaces to assist with orientation and wayfinding, as well as the provision of covered parking and drop-off facilities. (Please see introduction section for Level requirements.)

DESIGN STANDARDS

A	Parking and Loading/Drop-Off – Parking Area	Level 1	Level 2	Level 3	Level 4
A1	Accessible parking is provided. (See A11 – A23 for requirements).	<input type="checkbox"/> Yes	<input type="checkbox"/> Yes	<input type="checkbox"/> Yes	<input type="checkbox"/> Yes
A2	There is accessible parking within 50 m of the main entrance.		<input type="checkbox"/> Yes	<input type="checkbox"/> Yes	<input type="checkbox"/> Yes
A3	There is accessible parking within 30 m of the main entrance.			<input type="checkbox"/> Yes	<input type="checkbox"/> Yes
A4	There is a marked accessible route from the accessible parking spaces to the building. (Refer to Section C for accessibility standards for accessible routes)	<input type="checkbox"/> Yes	<input type="checkbox"/> Yes	<input type="checkbox"/> Yes	<input type="checkbox"/> Yes
A5	The accessible route required by A4, is the shortest and most direct route to the main entrance.		<input type="checkbox"/> Yes	<input type="checkbox"/> Yes	<input type="checkbox"/> Yes
A6	The accessible route required by A4 has a firm and slip resistant ground surface.	<input type="checkbox"/> Yes	<input type="checkbox"/> Yes	<input type="checkbox"/> Yes	<input type="checkbox"/> Yes
A7	The accessible route required by A4 is at least 1100 mm wide.	<input type="checkbox"/> Yes	<input type="checkbox"/> Yes	<input type="checkbox"/> Yes	<input type="checkbox"/> Yes
A8	The location of the main entrance is obvious from the accessible parking space locations. OR There are signs along the accessible route required by A4, indicating the location of the main entrance.	<input type="checkbox"/> Yes	<input type="checkbox"/> Yes	<input type="checkbox"/> Yes	<input type="checkbox"/> Yes
A9	The number of accessible parking spaces provided complies with Table 1.	<input type="checkbox"/> Yes	<input type="checkbox"/> Yes	<input type="checkbox"/> Yes	<input type="checkbox"/> Yes
A10	The number of accessible parking spaces provided complies with Table 2.		<input type="checkbox"/> Yes	<input type="checkbox"/> Yes	<input type="checkbox"/> Yes

Table 1 – Parking

Total Number of Automobile Parking Spaces	Number of Designated Accessible Parking Spaces
1-50	1
51-100	1
101-200	2
201-300	3
301-400	4
401-500	5
Over 500	1% of total

Table 2 – Parking

Total Number of Automobile Parking Spaces	Number of Designated Accessible Parking Spaces
1-25	1
26-50	2
51-75	3
76-100	4
101-150	5
151-200	6
201-300	7
301-400	8
401-500	9
501-1000	2% of total
Over 1000	20 plus 1 for each 100 over 1000

DESIGN STANDARDS

A	Parking Area cont'd	Level 1	Level 2	Level 3	Level 4
A11	Accessible parking spaces are at least 2400 mm wide x 3900 mm long, with an adjacent access aisle at least 1500 mm wide along the entire length of the parking space.	<input type="checkbox"/> Yes	<input type="checkbox"/> Yes	<input type="checkbox"/> Yes	<input type="checkbox"/> Yes
A12	At least 1 in every 8 accessible parking spaces (but no less than one) is at least 2600 mm wide, has an adjacent access aisle width of at least 2000 mm, and is designated as "van-accessible".		<input type="checkbox"/> Yes	<input type="checkbox"/> Yes	<input type="checkbox"/> Yes
A13	All accessible parking spaces are at least 2600 mm wide and have an adjacent access aisle width of at least 2000 mm.				<input type="checkbox"/> Yes
A14	Access aisles are identified with diagonal markings.	<input type="checkbox"/> Yes	<input type="checkbox"/> Yes	<input type="checkbox"/> Yes	<input type="checkbox"/> Yes
A15	Accessible parking spaces and adjacent access aisles have a firm, stable, slip resistant and level surface.	<input type="checkbox"/> Yes	<input type="checkbox"/> Yes	<input type="checkbox"/> Yes	<input type="checkbox"/> Yes
A16	Parking spaces and adjacent accessible routes are level with each other. OR Appropriate curb ramps have been provided between the access aisles and the adjacent accessible route. (Refer to A38-A45 for curb ramp design standards).	<input type="checkbox"/> Yes	<input type="checkbox"/> Yes	<input type="checkbox"/> Yes	<input type="checkbox"/> Yes
A17	Access to the vehicle and the adjacent access aisle is not impeded by posts or other barriers.	<input type="checkbox"/> Yes	<input type="checkbox"/> Yes	<input type="checkbox"/> Yes	<input type="checkbox"/> Yes
A18	Accessible parking spaces are marked with a vertical sign incorporating the international symbol of access that is at least 300 mm wide x 450 mm high, and has its centre 1500 – 2500 mm from the ground.	<input type="checkbox"/> Yes	<input type="checkbox"/> Yes	<input type="checkbox"/> Yes	<input type="checkbox"/> Yes
A19	Accessible parking spaces shall have the international symbol of access logo, at least 1000 mm long, painted on the ground in the centre of the stall.	<input type="checkbox"/> Yes	<input type="checkbox"/> Yes	<input type="checkbox"/> Yes	<input type="checkbox"/> Yes
A20	Guests do not need to use a ticket machine to pay for parking. OR Ticket machines used for parking payment are located on an accessible route, feature a clear level area in front at least 760 x 1370 mm, have operable parts located no higher than 1200 mm which can be used with one hand, without tight grasping, pinching or twisting of the wrist.	<input type="checkbox"/> Yes	<input type="checkbox"/> Yes	<input type="checkbox"/> Yes	<input type="checkbox"/> Yes
A21	The accessible parking spaces and the vehicle access/egress route to the accessible parking spaces have a height clearance of at least 2750 mm.	<input type="checkbox"/> Yes	<input type="checkbox"/> Yes	<input type="checkbox"/> Yes	<input type="checkbox"/> Yes
A22	Accessible parking spaces are inside/underground. OR Assistance is available and can be alerted by a driver from his/her vehicle.			<input type="checkbox"/> Yes	<input type="checkbox"/> Yes
A23	Plug-in facilities are not provided for block heaters. OR Accessible parking spaces incorporate plug-in facilities for block-heaters that are located on an accessible route, feature a clear level area in front at least 760 x 1370 mm, and have operable parts located at a height of 400-1200 mm from the ground.	<input type="checkbox"/> Yes	<input type="checkbox"/> Yes	<input type="checkbox"/> Yes	<input type="checkbox"/> Yes
COMPLIANCE LEVEL		<input type="checkbox"/> L1	<input type="checkbox"/> L2	<input type="checkbox"/> L3	<input type="checkbox"/> L4

DESIGN STANDARDS

A	Parking and Loading / Drop-off Area	Level 1	Level 2	Level 3	Level 4
A24	A drop off area is provided and is visible from the main entrance.	<input type="checkbox"/> Yes	<input type="checkbox"/> Yes	<input type="checkbox"/> Yes	<input type="checkbox"/> Yes
A25	An access aisle at least 1500 mm wide x 6000 mm long is provided, adjacent and parallel to the vehicle pull-up space.		<input type="checkbox"/> Yes	<input type="checkbox"/> Yes	
A26	An access aisle at least 2000 mm wide x 7000 mm long is provided, adjacent and parallel to the vehicle pull-up space.				<input type="checkbox"/> Yes
A27	There is an accessible route from the drop-off area to the main entrance. (Refer to Section C for requirements for Accessible Routes).	<input type="checkbox"/> Yes	<input type="checkbox"/> Yes	<input type="checkbox"/> Yes	<input type="checkbox"/> Yes
A28	The access aisle required by A25/26 and access route required by A27, are separated by a curb which incorporates an appropriate curb ramp. (Refer to A39-A46 for curb ramp design standards).	<input type="checkbox"/> Yes	<input type="checkbox"/> Yes		
A29	The access aisle requirements of A25/26 and access route requirements of A27, are at the same level but are separated from the roadway with posts or some type of detectable hazard indicator (Refer to A47 – A50 for hazard indicator design standards).			<input type="checkbox"/> Yes	<input type="checkbox"/> Yes
A30	The drop-off area and adjacent access aisle have a firm, stable, slip-resistant and level surface.	<input type="checkbox"/> Yes	<input type="checkbox"/> Yes	<input type="checkbox"/> Yes	<input type="checkbox"/> Yes
A31	A vertical clearance of at least 2750 mm is provided at the accessible passenger loading zone and along the vehicle access routes.	<input type="checkbox"/> Yes	<input type="checkbox"/> Yes	<input type="checkbox"/> Yes	
A32	A vertical clearance of at least 3350 mm is provided at the accessible passenger loading zone and along the vehicle access routes.				<input type="checkbox"/> Yes
A33	The drop-off area incorporates a sign indicating the designated use and time limits.		<input type="checkbox"/> Yes	<input type="checkbox"/> Yes	<input type="checkbox"/> Yes
A34	The passenger loading zone is sheltered with a canopy or other means of weather protection.			<input type="checkbox"/> Yes	<input type="checkbox"/> Yes
A35	Illumination of at least 50 lux is provided at the passenger loading zone.	<input type="checkbox"/> Yes	<input type="checkbox"/> Yes	<input type="checkbox"/> Yes	
A36	Illumination of at least 100 lux is provided at the passenger loading zone.				<input type="checkbox"/> Yes
A37	The ground surfaces incorporate colour and textural contrast between the passenger loading area and the vehicular parking area.			<input type="checkbox"/> Yes	<input type="checkbox"/> Yes
A38	Seating is available at the exterior of the main entrance with armrests and a firm seat.			<input type="checkbox"/> Yes	<input type="checkbox"/> Yes
COMPLIANCE LEVEL		<input type="checkbox"/> L1	<input type="checkbox"/> L2	<input type="checkbox"/> L3	<input type="checkbox"/> L4

DESIGN STANDARDS

A	Parking and Loading/Drop-Off Area Curb Ramps	Level 1	Level 2	Level 3	Level 4
A39	Curb ramps incorporate a running slope of between 1 in 10 (10%) and 1 in 15 (6.6%).	<input type="checkbox"/> Yes	<input type="checkbox"/> Yes	<input type="checkbox"/> Yes	<input type="checkbox"/> Yes
A40	Curb ramps have flared sides where pedestrians are likely to walk across them.	<input type="checkbox"/> Yes	<input type="checkbox"/> Yes	<input type="checkbox"/> Yes	<input type="checkbox"/> Yes
A41	The width of the curb ramps is at least 920 mm (not including any flared sides). OR Where curb ramps are exposed to snow, the width of the curb ramps is at least 1200 mm (not including any flared sides).	<input type="checkbox"/> Yes	<input type="checkbox"/> Yes	<input type="checkbox"/> Yes	<input type="checkbox"/> Yes
A42	The width of the curb ramp is at least 1500 mm. (Not including any flared sides)			<input type="checkbox"/> Yes	<input type="checkbox"/> Yes
A43	The surface of the curb ramps is stable, firm and slip-resistant.	<input type="checkbox"/> Yes	<input type="checkbox"/> Yes	<input type="checkbox"/> Yes	<input type="checkbox"/> Yes
A44	Curb ramps incorporate a detectable warning surface that is 600-650 mm deep, with colour and texture contrast, that extends the full width of the curb ramp, and commencing 150-200 mm back from the curb. (Refer to A47-A50 for design standards for detectable warning surfaces for curb ramps)	<input type="checkbox"/> Yes	<input type="checkbox"/> Yes	<input type="checkbox"/> Yes	<input type="checkbox"/> Yes
A45	Curb ramps are located so that they do not project into vehicular traffic lanes, parking spaces, or parking access aisles.	<input type="checkbox"/> Yes	<input type="checkbox"/> Yes	<input type="checkbox"/> Yes	<input type="checkbox"/> Yes
A46	Curb ramps lead people directly into a safe crossing area designated for pedestrian use.	<input type="checkbox"/> Yes	<input type="checkbox"/> Yes	<input type="checkbox"/> Yes	<input type="checkbox"/> Yes
COMPLIANCE LEVEL		<input type="checkbox"/> L1	<input type="checkbox"/> L2	<input type="checkbox"/> L3	<input type="checkbox"/> L4

A	Parking and Loading/Drop-Off Area Curb Ramps	Level 1	Level 2	Level 3	Level 4
A47	Detectable warning surfaces are firm and slip-resistant.	<input type="checkbox"/> Yes	<input type="checkbox"/> Yes	<input type="checkbox"/> Yes	<input type="checkbox"/> Yes
A48	Detectable warning surfaces for curb ramps are composed of truncated domes or another similarly-textured surface that is detectable by a person using a long white cane.	<input type="checkbox"/> Yes	<input type="checkbox"/> Yes	<input type="checkbox"/> Yes	<input type="checkbox"/> Yes
A49	Detectable warning surfaces incorporate a pronounced colour-contrasting with the adjacent surfaces.	<input type="checkbox"/> Yes	<input type="checkbox"/> Yes	<input type="checkbox"/> Yes	<input type="checkbox"/> Yes
A50	Detectable warning surfaces do not create a tripping hazard.	<input type="checkbox"/> Yes	<input type="checkbox"/> Yes	<input type="checkbox"/> Yes	<input type="checkbox"/> Yes
COMPLIANCE LEVEL		<input type="checkbox"/> L1	<input type="checkbox"/> L2	<input type="checkbox"/> L3	<input type="checkbox"/> L4

Entrances, Lobby & Reception

RATIONALE

Main Entry

The design and usability of entrances has a direct influence on the independence and dignity of everyone entering or exiting a facility. Features such as canopies can limit the influence of weather conditions on this already busy area. Canopies also make an entrance more obvious to someone with a cognitive disability or someone unfamiliar with the facility. An accessible entrance shall be equipped with an automatic door opener. Entrances that are not accessible shall have directional signage complying with Section M which indicates the nearest accessible entrance. Accessible entrances shall be identified with signage complying with applicable provisions of Section M.

To achieve basic access, accessible entrances should be provided based on the number of exits required by the local building code. To provide full access, all exits should be accessible.

Lobby

Maintaining a clear route of travel, free of obstacles and protruding objects throughout a facility is essential. All routes of travel must provide the clear width necessary for persons using wheelchairs or scooters, those in strollers or those traveling in pairs. Strong colour contrasts and/or tactile pathways set into floors may be used to assist visually impaired individuals and others to negotiate an environment.

Floor surfaces will influence every person who enters the building. Slippery surfaces are a potential hazard to people who are walking,

especially someone using a cane or crutches. Appropriate floor surfaces are especially important for children and seniors who may not be surefooted.

Glare from polished floor surfaces is a particular obstacle to someone with a visual impairment. Glare can obscure important orientation and safety features. It can also disorient people with low vision, as it may 'wash-out' the location of ground surfaces and hazards. Pronounced colour contrast between walls and floor finishes is helpful for everyone, as are changes in colour and texture where changes in level or function occur. Low pile carpeting is preferred, as it is easier for people to manoeuvre a manual wheelchair—it also minimizes potential tripping hazards for everyone. Wherever possible, changes in floor level should be avoided. Heavily patterned floors should also be avoided, as they can create visual confusion.

The route to the reception area should be intuitive and clearly defined as it is a good universal design approach to improve service. The route could be defined visually and reinforced by the placement of other furnishings. Overhanging plants along the route are not recommended.

Reception

Reception counters and work surfaces should accommodate the needs of a range of users. A variety of counter heights is recommended to provide a range of options, consideration should be given to the needs of people who are seated, as well as those who are standing. (Tables need to be high enough to provide kneespace for individuals using wheelchairs.) Manoeuvring space

at counters should provide sufficient turning space for a person using a wheelchair or scooter. Wheelchair seating spaces at accessible counters should incorporate sufficient clear floor space and kneespace. At a minimum, reception or information counters shall incorporate at least one accessible section.

The use of contrasting colour, tactile difference and audio landmarks can all assist individuals with a visual impairment to more precisely locate service counters. However, excessive background noise will be a barrier to people who are hard of hearing. When new hotels are built, the installation of an inductive loop assistive-listening system at the reception desk would be of great benefit—an aid in communication for guests who are hard of hearing.

Telephones

The placement of public and house telephones should be within reach of children and people seated in wheelchairs. Longer cords facilitate the use of the telephone by everyone. Adjustable volume controls are important for people who are hard of hearing. A TTY device (A text telephone device used to communicate by/with people who have limitations in their ability to hear or speak). The provision of a fold-down seat is appreciated by people having difficulty standing for extended periods. Telephones projecting from a wall may present a hazard, particularly to people with a visual impairment, if the sides do not extend to the floor. All public telephones shall be equipped with a volume control device. Full access is provided when there are closed-circuit telephones throughout a facility.

DESIGN STANDARDS

B	Entrances, Lobby & Reception – Entry	Level 1	Level 2	Level 3	Level 4
B1	The entrance is served by an accessible route.	<input type="checkbox"/> Yes	<input type="checkbox"/> Yes	<input type="checkbox"/> Yes	<input type="checkbox"/> Yes
B2	Level entry is provided (There is no step, or other change in level that would obstruct passage for a person using a wheelchair). A ramped entrance is permitted.	<input type="checkbox"/> Yes	<input type="checkbox"/> Yes	<input type="checkbox"/> Yes	<input type="checkbox"/> Yes
B3	The main entrance is clearly visible from the primary guest drop-off area. OR Signs have been provided indicating the location of the main entrance.	<input type="checkbox"/> Yes	<input type="checkbox"/> Yes	<input type="checkbox"/> Yes	<input type="checkbox"/> Yes
B4	The international symbol of access is displayed at the entrance.	<input type="checkbox"/> Yes	<input type="checkbox"/> Yes	<input type="checkbox"/> Yes	<input type="checkbox"/> Yes
B5	At least one door at the main entrance is equipped with a power door operator. Where there is a vestibule separating the doors, at least one outer door and one inner door are equipped with power door operators.	<input type="checkbox"/> Yes	<input type="checkbox"/> Yes	<input type="checkbox"/> Yes	<input type="checkbox"/> Yes
B6	The entrance is always unlocked. OR There is a signalling device located at a maximum height of 1200 mm from the floor, available to allow guests to notify someone that they wish to enter.		<input type="checkbox"/> Yes	<input type="checkbox"/> Yes	<input type="checkbox"/> Yes
B7	Ground surfaces at the entrances are firm and slip-resistant.	<input type="checkbox"/> Yes	<input type="checkbox"/> Yes	<input type="checkbox"/> Yes	<input type="checkbox"/> Yes
B8	Accessible doors at the entrance comply with Section D.	<input type="checkbox"/> Yes	<input type="checkbox"/> Yes	<input type="checkbox"/> Yes	<input type="checkbox"/> Yes
B9	A canopy or other means of weather protection is provided.			<input type="checkbox"/> Yes	<input type="checkbox"/> Yes
B10	At least 50% of the pedestrian entrances (including the main entrance) comply with B1, B2, and B4-B8.	<input type="checkbox"/> Yes	<input type="checkbox"/> Yes		
B11	At least 75% of the pedestrian entrances (including the main entrance) comply with B1, B2, and B4-B8.			<input type="checkbox"/> Yes	
B12	All of the pedestrian entrances (including the main entrance) comply with B1, B2, and B4-B8.				<input type="checkbox"/> Yes
COMPLIANCE LEVEL		<input type="checkbox"/> L1	<input type="checkbox"/> L2	<input type="checkbox"/> L3	<input type="checkbox"/> L4

DESIGN STANDARDS

B Entrances, Lobby & Reception – Reception Counter		Level 1	Level 2	Level 3	Level 4
B13	Where the main reception counter is not accessible, there is an alternate accessible reception counter/desk provided adjacent to the main reception counter/desk. The alternate accessible area shall be 730-860 mm high and at least 760 mm wide. There is kneespace on the guest-side of the counter/desk which complies with B15.	<input type="checkbox"/> Yes			
B14	The main accessible reception counter/desk has at least one accessible section which is 730-860 mm high and at least 760 mm wide. There is kneespace on the guest-side which complies with B15.		<input type="checkbox"/> Yes	<input type="checkbox"/> Yes	<input type="checkbox"/> Yes
B15	The counter/desk incorporates kneespace on the guest-side below the section required by B13 or B14, which is at least 750 mm wide x 685 mm high x 485 mm deep.	<input type="checkbox"/> Yes	<input type="checkbox"/> Yes	<input type="checkbox"/> Yes	<input type="checkbox"/> Yes
B16	There is clear floor space of at least 750 x 1200 mm in front of the section required by B13 or B14.	<input type="checkbox"/> Yes	<input type="checkbox"/> Yes	<input type="checkbox"/> Yes	<input type="checkbox"/> Yes
B17	There is clear floor space of at least 760 x 1370 mm in front of the section required by B13 or B14.			<input type="checkbox"/> Yes	<input type="checkbox"/> Yes
B18	An illumination level of at least 200 lux is provided at the reception counter/desk.		<input type="checkbox"/> Yes	<input type="checkbox"/> Yes	<input type="checkbox"/> Yes
B19	A loop system is provided at the reception counter to assist people who are hard of hearing.			<input type="checkbox"/> Yes	<input type="checkbox"/> Yes
COMPLIANCE LEVEL		<input type="checkbox"/> L1	<input type="checkbox"/> L2	<input type="checkbox"/> L3	<input type="checkbox"/> L4
B Entrances, Lobby & Reception – Line-up Guides		Level 1	Level 2	Level 3	Level 4
B20	Line-up guides are separated by a clear width of at least 920 mm.	<input type="checkbox"/> Yes	<input type="checkbox"/> Yes	<input type="checkbox"/> Yes	<input type="checkbox"/> Yes
B21	Line-up guides are separated by a clear width of at least 1100 mm.				<input type="checkbox"/> Yes
B22	Line-up configurations incorporate clear floor areas of at least 1500 x 1500 mm where they begin, end, and where line-ups change direction.	<input type="checkbox"/> Yes	<input type="checkbox"/> Yes	<input type="checkbox"/> Yes	<input type="checkbox"/> Yes
B23	Line-up guides are stable and do not move easily.	<input type="checkbox"/> Yes	<input type="checkbox"/> Yes	<input type="checkbox"/> Yes	<input type="checkbox"/> Yes
B24	Line-up guides are configured with their lowest element no higher than 680 mm, so that they are detectable by people using a white cane.	<input type="checkbox"/> Yes	<input type="checkbox"/> Yes	<input type="checkbox"/> Yes	<input type="checkbox"/> Yes
B25	Line-up guides are colour contrasted with their surroundings.			<input type="checkbox"/> Yes	<input type="checkbox"/> Yes
B26	When cueing is required and audible information is given, (“next please”) the notification systems should provide both visual and audible information. OR A visual signalling device is provided to augment the audible notification system.				<input type="checkbox"/> Yes
B27	When cueing is required, visual information is given (“electronic number display”). Where such notification systems are used, they should provide both visual and audible information. OR An audible notification system is provided to augment the visual signalling device.				<input type="checkbox"/> Yes
COMPLIANCE LEVEL		<input type="checkbox"/> L1	<input type="checkbox"/> L2	<input type="checkbox"/> L3	<input type="checkbox"/> L4

DESIGN STANDARDS

B	Entrances, Lobby & Reception - Public Pay Telephone	Level 1	Level 2	Level 3	Level 4
B28	At least one public pay telephone is equipped with a TTY and is identified with the symbol for a TTY. OR At least one public pay telephone is equipped with a shelf at least 450 mm wide x 300 mm deep, with an area at least 225 mm wide, and a clear height above it of at least 250 mm to accommodate a portable TTY unit.	<input type="checkbox"/> Yes			
B29	At least one public pay telephone is equipped with a TTY and is identified with the symbol for a TTY.		<input type="checkbox"/> Yes	<input type="checkbox"/> Yes	<input type="checkbox"/> Yes
B30	The public pay telephone required by B29 or B30 features a graduated volume control and is identified with the symbol of access for persons who are deaf, deafened or hard of hearing.	<input type="checkbox"/> Yes	<input type="checkbox"/> Yes	<input type="checkbox"/> Yes	<input type="checkbox"/> Yes
B31	At least one public pay telephone features a handset with a cord length of at least 1000 mm.	<input type="checkbox"/> Yes	<input type="checkbox"/> Yes	<input type="checkbox"/> Yes	<input type="checkbox"/> Yes
B32	The minimum clear floor space provided in front of the telephone required by B29 is at least 750 mm wide x 1200 mm deep (up to 480 mm of the 1200 mm may extend below the telephone as knee space).	<input type="checkbox"/> Yes	<input type="checkbox"/> Yes	<input type="checkbox"/> Yes	<input type="checkbox"/> Yes
B33	The clear floor space provided in front of the telephone required by B29 is at least 760 mm wide x 1370 mm deep (up to 480 mm of the 1370 mm may extend below the telephone as kneespace).			<input type="checkbox"/> Yes	<input type="checkbox"/> Yes
B34	The telephone required by B29 does not feature kneespace. OR The kneespace at the telephone required by B29 is at least 750 mm wide x 685 mm high x 485 mm deep.	<input type="checkbox"/> Yes	<input type="checkbox"/> Yes	<input type="checkbox"/> Yes	<input type="checkbox"/> Yes
B35	The height of operable parts (including coin slot) of the telephone is no more than 1200 mm.	<input type="checkbox"/> Yes	<input type="checkbox"/> Yes	<input type="checkbox"/> Yes	<input type="checkbox"/> Yes
B36	Telephone enclosures located adjacent to a path of travel project no more than 100 mm from the wall. OR Telephone enclosures located adjacent to a path of travel which project more than 100 mm shall have their lowest edge no higher than 680 mm to ensure that it is detectable by a person using a long white cane.	<input type="checkbox"/> Yes	<input type="checkbox"/> Yes	<input type="checkbox"/> Yes	<input type="checkbox"/> Yes
B37	The illumination level at the operating controls, directory and at any shelf is at least 200 lux.	<input type="checkbox"/> Yes	<input type="checkbox"/> Yes	<input type="checkbox"/> Yes	<input type="checkbox"/> Yes
B38	Where public pay telephones are not visible, directional signs are provided indicating the telephone locations and include the appropriate symbols of access.	<input type="checkbox"/> Yes	<input type="checkbox"/> Yes	<input type="checkbox"/> Yes	<input type="checkbox"/> Yes
B39	Telephones are not located within booths that have doors. OR Doors to telephone booths comply with Section D.	<input type="checkbox"/> Yes	<input type="checkbox"/> Yes	<input type="checkbox"/> Yes	<input type="checkbox"/> Yes
COMPLIANCE LEVEL		<input type="checkbox"/> L1	<input type="checkbox"/> L2	<input type="checkbox"/> L3	<input type="checkbox"/> L4

Circulation Routes

RATIONALE

Path of Travel

Maintaining a clear route of travel throughout a facility is essential. Any route of travel must provide the clear width necessary for persons using wheelchairs or scooters, those in strollers or those traveling in pairs to traverse safely. Consideration should be given to both the width of mobility devices and to their manoeuvrability. For example, while a corridor may be wide enough for a scooter driven in a straight line, it may not be possible to make a turn around a corner. Level 1 access provides a minimum width for the path of travel throughout a facility. Higher levels of access are achieved through increasing the width of circulation routes. The use of strong colour-contrast and/or tactile surfaces set into floors will assist everyone to identify important features and routes, but is particularly useful for people with low vision.

The dimensions and manoeuvring characteristics of wheelchairs and other mobility devices are as varied as the people who use them. Level 1 access provides a minimal and conservative approach to wheelchair manoeuvrability, reflecting the needs of the average user in an average-sized wheelchair. For example, the minimum clear floor or ground space required to accommodate a typical single, stationary, manual-wheelchair is 750 x 1200 mm, and 760 x 1370 mm for a typical scooter. Higher level access incorporates more generous space requirements, related to the dynamic movement of people using wheelchairs, scooters or other assistive devices. Level 4 Standards more accurately reflect the vast array of equipment that is used by people to access and use facilities, as well as the diverse range of user ability.

Protruding Objects

The provision of pathways free from protruding objects or freestanding obstacles is important to all facility users. An object protruding from a wall that cannot be detected by a person who is blind using a long white cane is dangerous, and can also be hazardous to a pedestrian distracted by a conversation. Detectable surfaces around freestanding obstacles, such as light standards, are advantageous to everyone using a pathway.

Ramps

Accessible routes are permitted to include ramps, curb ramps, elevators or other elevating devices where there exists a difference in elevation.

Ramps must be well designed to ensure the safety of all users - be they people using wheelchairs, pushing strollers or moving packages on a trolley. Steeply inclined ramps (i.e. steeper than 1 in 12) are difficult to navigate when using a wheelchair and can cause a wheelchair to tip backwards. Cross slopes should be avoided, as an increased effort will be required to negotiate the ramp. The placement of the ramp is also important to its accessibility. Space at the bottom of a ramp is needed for an individual to slow their speed and make a turn, if required. Similarly, flat areas at points along a long ramp enable an individual to slow down or to rest. A non-slip surface, edge protection and handrails all provide important safety functions.

Stairs

Stairs that are comfortable for an adult may be challenging for children, seniors or persons of short stature. Large or protruding nosings can present tripping hazards, particularly to persons with prosthetic devices or those using canes.

Cues to warn a person with a visual impairment of an upcoming set of stairs are vitally important – as are contrasting-coloured edges on treads. Stairs should comply with this standard even if the levels are otherwise accessible by an elevator, ramp or other accessible means of vertical access.

Handrails

Handrails should be well designed with consideration for the wide range of potential users. A handrail should be designed to be easily graspable by an adult's hand, a child or a person with arthritis to use. The same is true for the heights of handrails. Extensions of the handrails at the top and bottom of stairs, along with the use of a contrasting colour, provide important cues for everyone, including people who are visually impaired, and provide a support to ensure a safe and stable gait before ascending or descending the stairs. A continuous handrail with no interruptions ensures that a handhold will not be broken. The clear space between the wall and handrail is also essential, as it must provide enough room for the hand and knuckles but must not offer space into which the arm may slip during a fall or stumble on the stairs.

Detectable Warning Surfaces

Detectable warning surfaces provide important cues for persons with a visual impairment to navigate an environment. These surfaces alert a person with a visual impairment to potential hazards, such as crosswalks or stairs. Suitable surfaces include a change in texture and high colour contrast but they should not be a tripping hazard. Detectable warning surfaces should be used consistently throughout a facility.

DESIGN STANDARDS

C	Circulation Routes	Level 1	Level 2	Level 3	Level 4
C1	Floor and ground surfaces are stable, firm, slip-resistant, glare-free and not heavily patterned.	<input type="checkbox"/> Yes	<input type="checkbox"/> Yes	<input type="checkbox"/> Yes	<input type="checkbox"/> Yes
C2	Changes in level along accessible routes comply with the requirements of Table 3.	<input type="checkbox"/> Yes	<input type="checkbox"/> Yes	<input type="checkbox"/> Yes	<input type="checkbox"/> Yes
C3	Cross slopes at accessible routes are no steeper than 1 in 50 (2%).	<input type="checkbox"/> Yes	<input type="checkbox"/> Yes	<input type="checkbox"/> Yes	<input type="checkbox"/> Yes
C4	Accessible routes do not incorporate gratings. OR Gratings in accessible routes incorporate openings with their long dimension perpendicular to the primary direction of travel and openings no larger than 13 mm in one direction.	<input type="checkbox"/> Yes	<input type="checkbox"/> Yes	<input type="checkbox"/> Yes	<input type="checkbox"/> Yes
C5	Accessible routes do not have carpet or carpet tile. OR Carpet or carpet tile feature; low, firm, and level pile or loop; a pile height of no more than 13 mm; have a firm cushion, under padding, or backing (where provided); are securely fastened; and incorporate exposed edges (where provided) in compliance with Table 3.	<input type="checkbox"/> Yes	<input type="checkbox"/> Yes	<input type="checkbox"/> Yes	<input type="checkbox"/> Yes
C6	A minimum clear width of 920 mm is available along accessible routes. (Note: Clear width may be reduced to no less than 810 mm for short indentations of up to 600 mm in length (such as at doors).)	<input type="checkbox"/> Yes	<input type="checkbox"/> Yes		
C7	A minimum clear width of 1100 mm is available along accessible routes. (Note: Clear width may be reduced to no less than 810 mm for short indentations of up to 600 mm in length (such as at doors).)			<input type="checkbox"/> Yes	
C8	A minimum clear width of 1500 mm is available along accessible routes. (Note: Clear width may be reduced to no less than 810 mm for short indentations of up to 600 mm in length (such as at doors).)				<input type="checkbox"/> Yes
C9	High-traffic areas feature a minimum clear width of 1500 mm.	<input type="checkbox"/> Yes	<input type="checkbox"/> Yes	<input type="checkbox"/> Yes	
C10	High-traffic areas feature a minimum clear width of 1830 mm.				<input type="checkbox"/> Yes
C11	Accessible routes feature a wheelchair manoeuvring space of at least 1500 x 1500 mm at locations where turning around may be required (such as at dead-end corridors).	<input type="checkbox"/> Yes	<input type="checkbox"/> Yes		
C12	Accessible routes feature a wheelchair manoeuvring space of at least 2000 x 2000 mm at locations where turning around may be required (such as at dead-end corridors).			<input type="checkbox"/> Yes	<input type="checkbox"/> Yes

Table 3 – Changes in Level

Vertical Rise (mm)	Profile
1-6	May be vertical
7-13	Bevelled - but no steeper than 1 in 2 (50%)
Over 13	No steeper than 1 in 12 (8.3%)

DESIGN STANDARDS

C	Circulation Routes - continued	Level 1	Level 2	Level 3	Level 4
C13	Illumination levels along accessible routes are at least 100 lux.	<input type="checkbox"/> Yes	<input type="checkbox"/> Yes	<input type="checkbox"/> Yes	<input type="checkbox"/> Yes
C14	The clear headroom along accessible routes is at least 2030 mm.	<input type="checkbox"/> Yes	<input type="checkbox"/> Yes	<input type="checkbox"/> Yes	
C15	The clear headroom along accessible routes is at least 2100 mm.				<input type="checkbox"/> Yes
C16	There are no areas adjacent to accessible routes where the headroom is less than the requirements specified in C14. OR Where headroom in pedestrian areas adjacent to accessible routes is less than the requirements specified in C14, a guardrail or other barrier is provided with its leading edge no higher than 680 mm above the floor.	<input type="checkbox"/> Yes	<input type="checkbox"/> Yes	<input type="checkbox"/> Yes	<input type="checkbox"/> Yes
C17	Wall-mounted objects located adjacent to accessible routes project no more than 100 mm from the wall. OR Wall-mounted objects located adjacent to accessible routes which project more than 100 mm, have their lowest edge no higher than 680 mm to be cane-detectable.	<input type="checkbox"/> Yes	<input type="checkbox"/> Yes	<input type="checkbox"/> Yes	<input type="checkbox"/> Yes
C18	Rest areas incorporating accessible seating and wheelchair rest areas are provided along lengthy circulation routes.		<input type="checkbox"/> Yes	<input type="checkbox"/> Yes	<input type="checkbox"/> Yes
C19	Switches and operable controls are located at a maximum height of 1200 mm from the floor and have clear floor space of at least 750 x 1200 mm provided in front of the control (with the control centred on the clear space).	<input type="checkbox"/> Yes	<input type="checkbox"/> Yes		
C20	Switches and operable controls are located at a maximum height of 1200 mm from the floor and have clear floor space of at least 760 x 1370 mm provided in front of the control (with the control centred on the clear space).			<input type="checkbox"/> Yes	<input type="checkbox"/> Yes
C21	Switches and operable controls are operable using one hand without tight grasping, pinching or twisting of the wrist.	<input type="checkbox"/> Yes	<input type="checkbox"/> Yes	<input type="checkbox"/> Yes	<input type="checkbox"/> Yes
C22	Switches and operable controls are colour contrasted with the surface upon which they are located.	<input type="checkbox"/> Yes	<input type="checkbox"/> Yes	<input type="checkbox"/> Yes	<input type="checkbox"/> Yes
C23	The illumination level at switches and controls is at least 100 lux, and is 200 lux where reading is required.	<input type="checkbox"/> Yes	<input type="checkbox"/> Yes	<input type="checkbox"/> Yes	<input type="checkbox"/> Yes
COMPLIANCE LEVEL		<input type="checkbox"/> L1	<input type="checkbox"/> L2	<input type="checkbox"/> L3	<input type="checkbox"/> L4

DESIGN STANDARDS

C	Circulation Routes – Ramps	Level 1	Level 2	Level 3	Level 4
C24	The slope of ramps is no steeper than 1: 12 (8.3%).	<input type="checkbox"/> Yes	<input type="checkbox"/> Yes		
C25	The slope of ramps is no steeper than 1: 20 (5%).			<input type="checkbox"/> Yes	<input type="checkbox"/> Yes
C26	The maximum horizontal distance between ramp landings is 9000 mm.	<input type="checkbox"/> Yes	<input type="checkbox"/> Yes	<input type="checkbox"/> Yes	<input type="checkbox"/> Yes
C27	Cross slopes at ramps are no steeper than 1 in 50 (2%).	<input type="checkbox"/> Yes	<input type="checkbox"/> Yes	<input type="checkbox"/> Yes	<input type="checkbox"/> Yes
C28	The width of the ramp (between handrails) is at least 920 mm.	<input type="checkbox"/> Yes	<input type="checkbox"/> Yes	<input type="checkbox"/> Yes	<input type="checkbox"/> Yes
C29	The width of the ramp (between handrails) is 950 – 1100 mm.			<input type="checkbox"/> Yes	<input type="checkbox"/> Yes
C30	Ramps feature level landings at least 1500 mm wide x 1500 mm long at the top and bottom of the ramp, as well as where the ramps change direction.	<input type="checkbox"/> Yes	<input type="checkbox"/> Yes		
C31	Ramps feature level landings at least 2000 mm wide x 2000 mm long at the top and bottom of the ramp, as well as where the ramps change direction.			<input type="checkbox"/> Yes	<input type="checkbox"/> Yes
C32	Ramp and landing surfaces are stable, firm, and slip-resistant.	<input type="checkbox"/> Yes	<input type="checkbox"/> Yes	<input type="checkbox"/> Yes	<input type="checkbox"/> Yes
C33	Ramps feature appropriate handrails on both sides (Refer to C45 – C53 for design standards for accessible handrails)	<input type="checkbox"/> Yes	<input type="checkbox"/> Yes	<input type="checkbox"/> Yes	<input type="checkbox"/> Yes
C34	Ramps feature appropriate detectable warning surfaces at the top of ramps, at each landing incorporating an entrance into a ramp system, and at ramp landings longer than 2100 mm which do not feature continuous handrails. Detectable warning surfaces have a depth of 900-920 mm and extend the full width of the ramp. (Refer to C54 – C57 for design standards for detectable warning surfaces for ramps)				<input type="checkbox"/> Yes
C35	Ramp and landing edges are level with the adjacent grade or are located adjacent to walls. OR Ramps feature a curb which is at least 75 mm high or a raised barrier or rail with its lower edge not more than 75 mm from the ramp or landing surfaces.	<input type="checkbox"/> Yes	<input type="checkbox"/> Yes	<input type="checkbox"/> Yes	<input type="checkbox"/> Yes
C36	Ramps feature illumination levels of at least 100 lux.	<input type="checkbox"/> Yes	<input type="checkbox"/> Yes	<input type="checkbox"/> Yes	<input type="checkbox"/> Yes
COMPLIANCE LEVEL		<input type="checkbox"/> L1	<input type="checkbox"/> L2	<input type="checkbox"/> L3	<input type="checkbox"/> L4

DESIGN STANDARDS

C	Circulation Routes – Stairs	Level 1	Level 2	Level 3	Level 4
C37	Stairs feature uniform riser heights and tread depths (uniform within each stair).	<input type="checkbox"/> Yes	<input type="checkbox"/> Yes	<input type="checkbox"/> Yes	<input type="checkbox"/> Yes
C38	Stairs do not incorporate open risers.	<input type="checkbox"/> Yes	<input type="checkbox"/> Yes	<input type="checkbox"/> Yes	<input type="checkbox"/> Yes
C39	Stairs do not incorporate nosings. OR Nosings on stairs do not project more than 38 mm and are not configured with abrupt undersides.	<input type="checkbox"/> Yes	<input type="checkbox"/> Yes	<input type="checkbox"/> Yes	<input type="checkbox"/> Yes
C40	The leading edges of steps are slip resistant and feature a 40-60 mm long strip across the width of the step which is colour-contrasted with the tread and riser.	<input type="checkbox"/> Yes	<input type="checkbox"/> Yes	<input type="checkbox"/> Yes	<input type="checkbox"/> Yes
C41	Stairs feature appropriate handrails on both sides (Refer to C45 – C53 for design standards for accessible handrails).	<input type="checkbox"/> Yes	<input type="checkbox"/> Yes	<input type="checkbox"/> Yes	<input type="checkbox"/> Yes
C42	The illumination levels at the nosings of stairs is a minimum of 100 lux.	<input type="checkbox"/> Yes	<input type="checkbox"/> Yes	<input type="checkbox"/> Yes	<input type="checkbox"/> Yes
C43	The stairs are identified using accessible signs that incorporate tactile features. (Refer to Section M for design standards for accessible signs.)	<input type="checkbox"/> Yes	<input type="checkbox"/> Yes	<input type="checkbox"/> Yes	<input type="checkbox"/> Yes
C44	The stairs feature appropriate detectable warning surfaces at the top of stairs, at each landing incorporating an entrance into a stair system, where the regular pattern of a stair is broken, or at stair landings longer than 2100 mm which do not feature continuous handrails. Detectable warning surfaces commence one tread depth back from the top of the stair, have a depth of 900-920 mm, and extend the full width of the stair. (Refer to C54 – C57 for design standards for detectable warning surfaces for stairs)	<input type="checkbox"/> Yes	<input type="checkbox"/> Yes	<input type="checkbox"/> Yes	<input type="checkbox"/> Yes
COMPLIANCE LEVEL		<input type="checkbox"/> L1	<input type="checkbox"/> L2	<input type="checkbox"/> L3	<input type="checkbox"/> L4

DESIGN STANDARDS

C	Circulation Routes – Handrails	Level 1	Level 2	Level 3	Level 4
C45	Handrails feature a circular section with an outside diameter of 30-40 mm, or an equivalent gripping shape.	<input type="checkbox"/> Yes	<input type="checkbox"/> Yes	<input type="checkbox"/> Yes	<input type="checkbox"/> Yes
C46	Handrails are free of any sharp or abrasive elements.	<input type="checkbox"/> Yes	<input type="checkbox"/> Yes	<input type="checkbox"/> Yes	<input type="checkbox"/> Yes
C47	Handrails have a continuous gripping surface without interruption by newel posts or any other construction element or obstructions that can interrupt a hand hold.	<input type="checkbox"/> Yes	<input type="checkbox"/> Yes	<input type="checkbox"/> Yes	<input type="checkbox"/> Yes
C48	Handrails have a clear space between the handrail and the wall or other adjacent surface of 35-45 mm. OR Where the adjacent surface is rough, handrails have a clear space between the handrail and the wall or other adjacent surface of 45-60 mm.	<input type="checkbox"/> Yes	<input type="checkbox"/> Yes	<input type="checkbox"/> Yes	<input type="checkbox"/> Yes
C49	Handrails are not recessed. OR Recesses containing handrails extend at least 450 mm above the top of the handrails.	<input type="checkbox"/> Yes	<input type="checkbox"/> Yes	<input type="checkbox"/> Yes	<input type="checkbox"/> Yes
C50	Handrails are colour contrasted with the background environment.	<input type="checkbox"/> Yes	<input type="checkbox"/> Yes	<input type="checkbox"/> Yes	<input type="checkbox"/> Yes
C51	Handrails terminate safely by returning to a wall, post or to the floor.	<input type="checkbox"/> Yes	<input type="checkbox"/> Yes	<input type="checkbox"/> Yes	<input type="checkbox"/> Yes
C52	The tops of handrails are located 860-920 mm above the front edge of steps, above the surface of ramps, and above floor surfaces.	<input type="checkbox"/> Yes	<input type="checkbox"/> Yes	<input type="checkbox"/> Yes	<input type="checkbox"/> Yes
C53	Handrails are continuous. OR Where handrails are not continuous at the top or bottom of the stairs or ramps, they extend parallel to the floor a minimum of 300 mm.	<input type="checkbox"/> Yes	<input type="checkbox"/> Yes	<input type="checkbox"/> Yes	<input type="checkbox"/> Yes
COMPLIANCE LEVEL		<input type="checkbox"/> L1	<input type="checkbox"/> L2	<input type="checkbox"/> L3	<input type="checkbox"/> L4

DESIGN STANDARDS

C Circulation Routes – Detectable Warnings		Level 1	Level 2	Level 3	Level 4
C54	Detectable warning surfaces are firm and slip-resistant.	<input type="checkbox"/> Yes	<input type="checkbox"/> Yes	<input type="checkbox"/> Yes	<input type="checkbox"/> Yes
C55	Detectable warning surfaces for stairs and ramps are composed of continuous ridges running perpendicular to the direction of travel, or another similarly-textured surface that is detectable by a person using a long white cane.	<input type="checkbox"/> Yes	<input type="checkbox"/> Yes	<input type="checkbox"/> Yes	<input type="checkbox"/> Yes
C56	Detectable warning surfaces incorporate pronounced colour-contrast to the adjacent surfaces.	<input type="checkbox"/> Yes	<input type="checkbox"/> Yes	<input type="checkbox"/> Yes	<input type="checkbox"/> Yes
C57	Detectable warning surfaces do not create a tripping hazard.	<input type="checkbox"/> Yes	<input type="checkbox"/> Yes	<input type="checkbox"/> Yes	<input type="checkbox"/> Yes
COMPLIANCE LEVEL		<input type="checkbox"/> L1	<input type="checkbox"/> L2	<input type="checkbox"/> L3	<input type="checkbox"/> L4
C Circulation Routes – Summary		Level 1	Level 2	Level 3	Level 4
C58	Accessible circulation routes link all public features on the entrance level of a facility, as well as public features on any floors served by a ramp, passenger lift, passenger elevator, escalator or inclined moving walk.	<input type="checkbox"/> Yes	<input type="checkbox"/> Yes	<input type="checkbox"/> Yes	<input type="checkbox"/> Yes
C59	Accessible circulation routes link all public features and accessible guest rooms/suites. Exception: Where public features are duplicated within a facility, at least 10% but never less than one of each feature, shall be located on an accessible circulation route.	<input type="checkbox"/> Yes	<input type="checkbox"/> Yes	<input type="checkbox"/> Yes	<input type="checkbox"/> Yes
C60	Accessible circulation routes link all publicly-accessible features of the facility, as well as all guest rooms/suites.				<input type="checkbox"/> Yes
COMPLIANCE LEVEL		<input type="checkbox"/> L1	<input type="checkbox"/> L2	<input type="checkbox"/> L3	<input type="checkbox"/> L4

Doors

RATIONALE

Wide doorways are useful to individuals using wheelchairs, pushing strollers, or making a delivery. However, a raised threshold at the base of the door can impede access. This same group, with the addition of children, seniors or even someone carrying packages, may have difficulty opening a heavy door and would benefit from an automatic door opener. Level 1 access defines the minimum clear opening requirements for doorways. Higher access levels require wider

door openings to be more accommodating to more people.

Careful thought to the direction of the door swing can enhance usability, as well as limit a hazard to other pedestrians. Sliding doors are easier for some individuals to operate, and also require less manoeuvring space for a person using a wheelchair.

Doors that require two hands to operate will not be usable by some people. Many people find revolving doors difficult. Space may be an issue for people using wheelchairs and strollers, while the timing may be difficult for children or someone with a cognitive or visual disability. An alternate door should always be provided. Glass doors can present a hazard to persons who are visually impaired. The inclusion of colour contrast strips across the glass, mounted at eye level, as well as colour-contrasting doorframes and door hardware, will increase the visibility of a glass door for everyone.

DESIGN STANDARDS

D	Doors	Level 1	Level 2	Level 3	Level 4
D1	A clear width of at least 810 mm is provided at doors.	<input type="checkbox"/> Yes	<input type="checkbox"/> Yes		
D2	A clear width of at least 900 mm is provided at doors.			<input type="checkbox"/> Yes	
D3	A clear width of at least 950 mm is provided at doors.				<input type="checkbox"/> Yes
D4	Double-leaf doors are not provided. OR Where double leaf doors are provided, at least one leaf complies with requirements of D1, D2 or D3.	<input type="checkbox"/> Yes	<input type="checkbox"/> Yes	<input type="checkbox"/> Yes	<input type="checkbox"/> Yes
D5	Door hardware can be operated using one hand without tight grasping, pinching, or twisting of the wrist.	<input type="checkbox"/> Yes	<input type="checkbox"/> Yes	<input type="checkbox"/> Yes	<input type="checkbox"/> Yes
D6	Door hardware is located 800-1200 mm above the floor.	<input type="checkbox"/> Yes	<input type="checkbox"/> Yes	<input type="checkbox"/> Yes	<input type="checkbox"/> Yes
D7	The threshold height at doors is no more than 13 mm. AND Where the threshold height is 7-13 mm, it is bevelled.	<input type="checkbox"/> Yes	<input type="checkbox"/> Yes		
D8	The maximum threshold height at doors is no more than 6 mm.			<input type="checkbox"/> Yes	<input type="checkbox"/> Yes

DESIGN STANDARDS

D	Doors - continued	Level 1	Level 2	Level 3	Level 4
D9	Door systems incorporate single doors only. OR Where only one door is accessible in a bank of doors, it is identified by the international symbol of access.	_ Yes	_ Yes	_ Yes	_ Yes
D10	There are no vestibules. OR At vestibules, the distance between two swinging doors in series is at least 1200 mm plus the width of any door swing into the vestibule.	_ Yes	_ Yes		
D11	There are no vestibules. OR At vestibules, the distance between two swinging doors in series is at least 1370 mm plus the width of any door swing into the vestibule.			_ Yes	_ Yes
D12	Doors along accessible routes are held open by electro-magnetic hold-open devices. OR Power door operators are provided on doors along the accessible route that are not held open using electro-magnetic hold-open devices.			_ Yes	_ Yes
D13	There are no power assisted doors. OR Where power assisted doors are installed, they meet the requirements of D24 – D28.	_ Yes	_ Yes	_ Yes	_ Yes
D14	Doors feature level manoeuvring space on each side in compliance with Table 4.	_ Yes	_ Yes	_ Yes	
D15	Doors feature level manoeuvring space on each side in compliance with Table 5.				_ Yes

Table 4 – Manoeuvring Space at Doors

Context		Clear floor area required (mm)		Clear floor space at the latch side (mm)
		Depth	Width	
Front Approach	Pull Side	1500	1500	600
	Push Side	1200	1200	300
Latch Edge Approach	Pull Side	1200	1500	600
	Push Side	1050	1500	600
Hinge Edge Approach	Pull Side	1500	1500	600
	Push Side	1050	1350	450
Sliding Door	Front Approach	1200	900	50
	Side Approach	1050	1350	540

Table 5 – Enhanced Manoeuvring Space at Doors

Context		Clear floor area required (mm)		Clear floor space at the latch side (mm)
		Depth	Width	
Front Approach	Pull Side	1525	1600	600
	Push Side	1370	1250	300
Latch Edge Approach	Pull Side	1370	1600	600
	Push Side	1370	1525	600
Hinge Edge Approach	Pull Side	2440	2440	600
	Push Side	1370	1830	450
Sliding Door	Front Approach	1370	1100	50
	Side Approach	1370	1550	540

DESIGN STANDARDS

D	Doors - continued	Level 1	Level 2	Level 3	Level 4
D16	Revolving doors are not used as a means of entry. OR Where revolving doors are used, an adjacent door is provided in compliance with the requirements of this section.	<input type="checkbox"/> Yes	<input type="checkbox"/> Yes	<input type="checkbox"/> Yes	<input type="checkbox"/> Yes
D17	Door hardware and door operating controls are colour contrasted with their background.	<input type="checkbox"/> Yes	<input type="checkbox"/> Yes	<input type="checkbox"/> Yes	<input type="checkbox"/> Yes
D18	If doors incorporate kick plates in high traffic areas, they shall be at least 250 mm high.			<input type="checkbox"/> Yes	<input type="checkbox"/> Yes
D19	If doors incorporate glass panels, the height of the lowest edge of the glass panels shall be no higher than 900 mm above the floor.	<input type="checkbox"/> Yes	<input type="checkbox"/> Yes	<input type="checkbox"/> Yes	<input type="checkbox"/> Yes
D20	The force required to open doors shall not be more than 22 kN.	<input type="checkbox"/> Yes	<input type="checkbox"/> Yes	<input type="checkbox"/> Yes	<input type="checkbox"/> Yes
D21	Where the door is glass in fully-glazed or frameless glass doors, it shall be identified with a contrasting horizontal strip which is a minimum 50 mm high, affixed approximately 1350 mm from the floor.	<input type="checkbox"/> Yes	<input type="checkbox"/> Yes	<input type="checkbox"/> Yes	<input type="checkbox"/> Yes
D22	Where there are frameless glass doors, there is a colour-contrasting strip around the perimeter of the door.	<input type="checkbox"/> Yes	<input type="checkbox"/> Yes	<input type="checkbox"/> Yes	<input type="checkbox"/> Yes
D23	Frameless glass doors are not used.			<input type="checkbox"/> Yes	<input type="checkbox"/> Yes
	COMPLIANCE LEVEL	<input type="checkbox"/> L1	<input type="checkbox"/> L2	<input type="checkbox"/> L3	<input type="checkbox"/> L4

DESIGN STANDARDS

D Doors – Power Assisted Doors		Level 1	Level 2	Level 3	Level 4
D24	Power assisted swinging doors take at least 3 seconds to swing open from fully closed and remain open for a minimum of 5 seconds.	<input type="checkbox"/> Yes	<input type="checkbox"/> Yes	<input type="checkbox"/> Yes	<input type="checkbox"/> Yes
D25	Power assisted swinging doors that open into a route of travel have guardrails or other barriers at right angles to the wall containing the door, which are detectable to a person who is blind using a long white cane.	<input type="checkbox"/> Yes	<input type="checkbox"/> Yes	<input type="checkbox"/> Yes	<input type="checkbox"/> Yes
D26	Power assisted doors are automatically activated. OR Controls to open power assisted doors are located along the route of travel; are clearly visible before reaching the door; are clear of the door swing or any other fixture; are located 800-1200 mm above the ground or floor surface; incorporate a clear floor space of at least 750 x 1200 mm in front of the control (with the control centred on the clear space); consist of activation pads at least 25 mm wide x 75 mm high that are operable by touching any part of the surface with a fist or an arm, with one hand, without tight grasping, pinching, or twisting of the wrist; and are marked with the international symbol of access.	<input type="checkbox"/> Yes	<input type="checkbox"/> Yes		
D27	Power assisted doors are automatically activated. OR Comply with the requirements of D26, except that a clear floor space of at least 760 x 1370 mm is provided in front of the control (with the control centred on the clear space).			<input type="checkbox"/> Yes	<input type="checkbox"/> Yes
D28	An illumination level of at least 100 lux is provided at the operating controls for power assisted doors.	<input type="checkbox"/> Yes	<input type="checkbox"/> Yes	<input type="checkbox"/> Yes	<input type="checkbox"/> Yes
COMPLIANCE LEVEL		<input type="checkbox"/> L1	<input type="checkbox"/> L2	<input type="checkbox"/> L3	<input type="checkbox"/> L4

D Doors – Summary		Level 1	Level 2	Level 3	Level 4
D29	Accessible doors are provided to all public features on the entrance level of a facility, as well as public features on any floors served by a ramp, passenger lift, passenger elevator, escalator or inclined moving walk.	<input type="checkbox"/> Yes	<input type="checkbox"/> Yes	<input type="checkbox"/> Yes	<input type="checkbox"/> Yes
D30	Accessible doors are provided to all public features and accessible guest rooms/suites. (Where features are duplicated, at least 10% but never less than one of each public feature shall incorporate accessible doors.)	<input type="checkbox"/> Yes	<input type="checkbox"/> Yes	<input type="checkbox"/> Yes	<input type="checkbox"/> Yes
D31	Accessible doors are provided to all public features of the facility.				<input type="checkbox"/> Yes
COMPLIANCE LEVEL		<input type="checkbox"/> L1	<input type="checkbox"/> L2	<input type="checkbox"/> L3	<input type="checkbox"/> L4

Elevators

RATIONALE

Accessible elevators should be located on an accessible route complying with Section C. Elevators may not be required when accessible ramps complying with Section C are used to overcome changes in floor level. Elevators should be automatic and the buttons need to address a range of functional issues, including reach, dexterity and visibility. Best access is

provided when audible cues are used to identify different floor levels, as well as the direction of travel. Although particularly important for visually impaired individuals these are, in fact, of benefit to everyone who uses the elevator. Adequate door closing delays provide individuals using mobility devices additional time to reach, enter or exit the elevator car.

Emergency communication systems must be accessible to everyone, with both visual and auditory communication systems provided.

Note: This section does not require a facility to install an elevator. The following requirements apply only if a facility incorporates an existing elevator, or a new elevator is proposed.

DESIGN STANDARDS

E	Elevators	Level 1	Level 2	Level 3	Level 4
E1	Elevators serve all publicly accessible floors and facilities.		<input type="checkbox"/> Yes	<input type="checkbox"/> Yes	<input type="checkbox"/> Yes
E2	The cab size of elevators complies with Table 6.	<input type="checkbox"/> Yes	<input type="checkbox"/> Yes	<input type="checkbox"/> Yes	<input type="checkbox"/> Yes
E3	The cab size of elevators is at least 2000 x 2000 mm.				<input type="checkbox"/> Yes
E4	Elevator doors feature a reopening device that stops and reopens a car door and hoist way door automatically if the door becomes obstructed by an object or person.	<input type="checkbox"/> Yes	<input type="checkbox"/> Yes	<input type="checkbox"/> Yes	<input type="checkbox"/> Yes
E5	The re-opening device for elevator doors must be set to hold the door open for a minimum of 20 seconds.	<input type="checkbox"/> Yes	<input type="checkbox"/> Yes	<input type="checkbox"/> Yes	<input type="checkbox"/> Yes
E6	The elevator floor is firm, stable, and slip resistant.	<input type="checkbox"/> Yes	<input type="checkbox"/> Yes	<input type="checkbox"/> Yes	<input type="checkbox"/> Yes
E7	The elevator floor is not carpeted. OR The carpet pile height is no more than 13 mm.	<input type="checkbox"/> Yes	<input type="checkbox"/> Yes	<input type="checkbox"/> Yes	<input type="checkbox"/> Yes
E8	Handrails are provided on all elevator walls without doors, at a height of 800-920 mm from the floor, with a space of 35-45 mm between the handrail and the wall.	<input type="checkbox"/> Yes	<input type="checkbox"/> Yes	<input type="checkbox"/> Yes	<input type="checkbox"/> Yes

Table 6 - Minimum Dimensions of Elevator Cabs (mm)

Door Location	Door clear width	Inside car, side-to-side	Inside car, back wall to front return	Inside car, back wall to inside face of door
Centred	1065	2030	1295	1370
Side (off-centre)	900-915	1725	1295	1370
Any	900-915	1370	2030	2030
Any	900-915	1525	1525	1525

DESIGN STANDARDS

E	Elevators - continued	Level 1	Level 2	Level 3	Level 4
E9	Illumination levels at car controls, the platform, the car threshold, and landing sill are at least 100 lux.	_ Yes	_ Yes	_ Yes	_ Yes
E10	Clear floor space of at least 750 x 1200 mm is available at all elevator controls.	_ Yes	_ Yes		
E11	Clear floor space of at least 760 x 1370 mm is available at all elevator controls.			_ Yes	_ Yes
E12	Elevators serving 16 floors or less feature in-cab floor buttons no higher than 1220 mm from the floor.	_ Yes	_ Yes	_ Yes	_ Yes
E13	Elevators serving more than 16 floors feature in-cab floor buttons no higher than 1370 mm, with adequate space to reach these buttons using a parallel approach.	_ Yes	_ Yes	_ Yes	_ Yes
E14	Emergency control buttons have their centrelines at a maximum height of 890 mm above the floor.	_ Yes	_ Yes	_ Yes	_ Yes
E15	The emergency controls, including the emergency alarm are grouped at the bottom of the control panel.	_ Yes	_ Yes	_ Yes	_ Yes
E16	Panel controls feature Braille and raised characters - Braille is placed immediately to the left of the button to which they apply.	_ Yes	_ Yes	_ Yes	_ Yes
E17	Control buttons for the main entry floor are identified with a tactile and visual five point star symbol.	_ Yes	_ Yes	_ Yes	_ Yes
E18	An emergency signaling system is provided and is not limited to voice communication.	_ Yes	_ Yes	_ Yes	_ Yes
E19	A TTY-equipped telephone or equivalent is provided for emergency communication.				_ Yes
E20	A telephone is not part of the emergency signaling system. OR The telephone features a cord length of at least 900 mm, a volume control and is identified using the international symbol for a telephone.	_ Yes	_ Yes	_ Yes	_ Yes
E21	Where instructions for the car emergency signaling device are provided, the essential information is provided in both tactile and visual forms.	_ Yes	_ Yes	_ Yes	_ Yes
E22	Hall call buttons are located no higher than 1220 mm.	_ Yes	_ Yes	_ Yes	_ Yes
E23	There is a clear floor space of at least 750 x 1200 mm at hall call buttons.	_ Yes	_ Yes		
E24	There is a clear floor space of at least 760 x 1370 mm at hall call buttons.			_ Yes	_ Yes
E25	Elevators cabs incorporate audible and visible signals to indicate the car floor position.	_ Yes	_ Yes	_ Yes	_ Yes
E26	Elevators cabs comply with E25 and incorporate voice annunciation to indicate the car floor position.				_ Yes
E27	Audible and visual signals are provided in elevator lobbies to indicate which car is answering a call and its direction of travel.	_ Yes	_ Yes	_ Yes	_ Yes
COMPLIANCE LEVEL		_ L1	_ L2	_ L3	_ L4

Bars and Restaurants

RATIONALE

All guests should have access to all facilities in order to fully enjoy their stay. Access to restaurants and bars is facilitated by ensuring a smooth and level surface is provided throughout and that appropriate circulation routes are maintained (Refer to Section C). The surface of circulation routes should also be colour-contrasted from surrounding areas to provide orientation cues – a feature that is particularly helpful for persons with reduced vision.

Food service lines in self-service areas should provide adequate space to navigate independently and self-service tray counters should be located at an appropriate height for standing and seated use. Self-serve food areas should provide choices of food at heights appropriate for standing or seated access.

At least one area of bars and restaurants should be well-lit and tables should feature unobstructed kneespace below to accommodate wheelchair users. High counters and bars will not be usable by many people, so alternate accessible seating should be provided within the same area.

DESIGN STANDARDS

F	Restaurants and Bars	Level 1	Level 2	Level 3	Level 4
F1	The clear width of primary circulation routes throughout restaurants and bars is at least 920 mm wide. (Refer also to Section C to ensure that all requirements for circulation routes are met)	_ Yes	_ Yes	_ Yes	_ Yes
F2	The clear width of primary circulation routes throughout restaurants and bars is at least 1100 mm wide. (Refer also to Section C to ensure that all requirements for circulation routes are met)			_ Yes	_ Yes
F3	Fixed counters or tables are not provided. OR At least 10% of fixed counters and tables have their top at a height between 710-865 mm, and have clear kneespace below of at least 750 mm wide x 685 mm high x 480 mm deep, and feature a clear floor space of at least 750 mm wide x 1200 mm deep to access the table. - (For F3–F5; up to 480 mm of the 1200 mm may extend below the table or counter as kneespace. Exception: These requirements do not apply if equivalent service is available at adjacent accessible tables within the same area.)	_ Yes	_ Yes		
F4	Fixed counters or tables are not provided. OR At least 10% of fixed counters and tables have their top at a height between 710-865 mm, and have clear kneespace below of at least 750 mm wide x 685 mm high x 480 mm deep, and feature a clear floor space of at least 760 mm wide x 1370 mm deep to access the table.			_ Yes	_ Yes
F5	Fixed counters or tables are not provided. OR All fixed counters and tables have their top at a height between 710-865 mm, and have clear kneespace below of at least 750 mm wide x 685 mm high x 480 mm deep, and feature a clear floor space of at least 760 mm wide x 1370 mm deep to access the table.				_ Yes

DESIGN STANDARDS

F	Restaurants and Bars - continued	Level 1	Level 2	Level 3	Level 4
F6	Fixed counters or tables are not provided. OR The tables or counters required by F3-F5 are located on an accessible route. (Refer to Section C for design standards for accessible routes).	<input type="checkbox"/> Yes	<input type="checkbox"/> Yes	<input type="checkbox"/> Yes	<input type="checkbox"/> Yes
F7	Self-serve food service areas are not used. OR Where self-serve food service areas are used, food service lines shall be at least 920 mm wide and where tray slides are provided, they shall be no higher than 865 mm.	<input type="checkbox"/> Yes	<input type="checkbox"/> Yes		
F8	Self-serve food service areas are not used. OR Where self-serve food service areas are used, food service lines shall be at least 1100 mm wide and where tray slides are provided, they shall be no higher than 865 mm.			<input type="checkbox"/> Yes	<input type="checkbox"/> Yes
F9	Self-serve food service areas are not used. OR Where self-serve food service areas are used, at least 50% of available food choices are located at a height between 400-1200 mm, and can be reached by a person using a wheelchair.	<input type="checkbox"/> Yes	<input type="checkbox"/> Yes	<input type="checkbox"/> Yes	
F10	Self-serve food service areas are not used. OR Where self-serve food service areas are used, all available food choices are located at a height between 400-1200 mm, and can be reached by a person using a wheelchair.				<input type="checkbox"/> Yes
F11	Food or drink is not served to guests seated at a counter with stools. OR Where food or drink is served to guests seated at a counter with stools, a portion of the counters that are at least 1525 mm long, are at a height between 700 - 865 mm, or service is available at accessible tables within the same area.		<input type="checkbox"/> Yes	<input type="checkbox"/> Yes	<input type="checkbox"/> Yes
F12	Restaurants and bars do not feature areas that are accessible only by stairs. OR Where restaurants and bars feature areas that are accessible only by stairs, there are accessible facilities within the same area providing the same services and decor as provided on any raised or sunken area.	<input type="checkbox"/> Yes	<input type="checkbox"/> Yes	<input type="checkbox"/> Yes	<input type="checkbox"/> Yes
F13	Restaurants and bars do not feature areas that are accessible only by stairs. OR Where restaurants and bars feature areas that are accessible only by stairs, 33% of the total facilities are accessible, providing the same services and decor as provided on any raised or sunken area.		<input type="checkbox"/> Yes	<input type="checkbox"/> Yes	<input type="checkbox"/> Yes
F14	Restaurants and bars do not feature areas that are accessible only by stairs. OR Where restaurants and bars feature areas that are accessible only by stairs, 66% of the total facilities are accessible, providing the same services and decor as provided on any raised or sunken area.			<input type="checkbox"/> Yes	<input type="checkbox"/> Yes
F15	Restaurants and bars do not feature areas that are accessible only by stairs.				<input type="checkbox"/> Yes
F16	Cash registers in food service lines and other locations incorporate a digital display showing the amount owing, visible to everyone including the deaf, deafened or hard of hearing guest to see.		<input type="checkbox"/> Yes	<input type="checkbox"/> Yes	<input type="checkbox"/> Yes
F17	At least 10% of seating is located in a quiet area (i.e. away from the kitchen) with good lighting, for people who are hearing impaired or others who prefer a quiet area.				<input type="checkbox"/> Yes
	COMPLIANCE LEVEL	<input type="checkbox"/> L1	<input type="checkbox"/> L2	<input type="checkbox"/> L3	<input type="checkbox"/> L4

Meeting Rooms

RATIONALE

Meeting rooms should be accessible to everyone. Rooms should have doors which meet minimum dimensional requirements. Circulation areas throughout meeting rooms should be clear of protruding objects and configured to accommodate persons using mobility equipment, including larger wheelchairs and scooters.

Tables should incorporate appropriate kneespace to accommodate people who use wheelchairs and scooters. Natural coloured task lighting, such as that provided through halogen bulbs, is a design feature that will facilitate use by most, including people with vision impairments. In locations where reflective glare might be problematic, such as where large expanses of glass are located adjacent to reflective flooring, consideration should be given to providing blinds that can be louvered upwards. Everyone, but

particularly people who are hard of hearing, would benefit from having a quiet acoustic environment - background noise from mechanical equipment such as fans, should be minimal. Meeting rooms should be equipped with assistive listening systems and telephone equipment for individuals who are deaf, deafened or hard of hearing (such as a TTY) should be available. Where permanent ramped access is not provided to raised speaking/presentation areas, a portable ramp should be available.

DESIGN STANDARDS

G Meeting Rooms		Level 1	Level 2	Level 3	Level 4
G1	Primary access routes within meeting spaces are at least 920 mm wide.	<input type="checkbox"/> Yes	<input type="checkbox"/> Yes		
G2	Primary access routes within meeting spaces are at least 1100 mm wide.			<input type="checkbox"/> Yes	<input type="checkbox"/> Yes
G3	Seating spaces for persons in wheelchairs have a clear floor area of at least 750 x 1200 mm (480 mm of the 1200 mm may be kneespace under the table).	<input type="checkbox"/> Yes	<input type="checkbox"/> Yes		
G4	Seating spaces for persons in wheelchairs incorporate a clear floor area of at least 760 x 1370 mm (480 mm of the 1370 mm may be kneespace under the table), and a kneespace of at least 750 mm wide x 685 mm high x 480 mm deep.			<input type="checkbox"/> Yes	<input type="checkbox"/> Yes
G5	Wheelchair seating spaces are level and are located on accessible routes. Accessible routes do not overlap wheelchair seating spaces.	<input type="checkbox"/> Yes	<input type="checkbox"/> Yes	<input type="checkbox"/> Yes	<input type="checkbox"/> Yes
G6	Wheelchair seating spaces are an integral part of the seating plan.	<input type="checkbox"/> Yes	<input type="checkbox"/> Yes	<input type="checkbox"/> Yes	<input type="checkbox"/> Yes
G7	The top of counters and tables are at a height of 710-865 mm.	<input type="checkbox"/> Yes	<input type="checkbox"/> Yes	<input type="checkbox"/> Yes	<input type="checkbox"/> Yes
G8	The illumination level at work surfaces is at least 200 lux.	<input type="checkbox"/> Yes	<input type="checkbox"/> Yes	<input type="checkbox"/> Yes	<input type="checkbox"/> Yes

DESIGN STANDARDS

G Meeting Rooms - continued	Level 1	Level 2	Level 3	Level 4
G9 Switches and operable controls are located 400-1200 mm from the floor and have clear floor space of at least 750 x 1200 mm provided in front of the control (with the control centred on the clear space).	_ Yes	_ Yes		
G10 Switches and operable controls are located 400-1200 mm from the floor and have clear floor space of at least 760 x 1370 mm provided in front of the control (with the control centred on the clear space).			_ Yes	_ Yes
G11 Switches and operable controls are operable using one hand without tight grasping, pinching or twisting of the wrist.	_ Yes	_ Yes	_ Yes	_ Yes
G12 Switches and operable controls are colour contrasted with the surface upon which they are located.	_ Yes	_ Yes	_ Yes	_ Yes
G13 The illumination level at switches and controls is at least 100 lux, and is 200 lux where reading is required.	_ Yes	_ Yes	_ Yes	_ Yes
G14 An assistive listening system is available.	_ Yes	_ Yes	_ Yes	_ Yes
G15 The meeting room does not feature a raised speakers' platform. OR A ramp with a protected edge, sloped no steeper than 1 in 12 (8.3%) provides access to the raised speaker platform.		_ Yes	_ Yes	_ Yes
G16 Accessible signage is provided within the meeting area. (Refer to Section M for design standards for accessible signs).	_ Yes	_ Yes	_ Yes	_ Yes
G17 At least one telephone in meeting rooms features a volume control.		_ Yes	_ Yes	_ Yes
G18 At least one telephone in meeting rooms features a TTY device.				_ Yes
COMPLIANCE LEVEL	_ L1	_ L2	_ L3	_ L4

Business Centres

RATIONALE

Business centres will be used by a diverse group of people, including guests with disabilities. The ability to manoeuvre throughout the business centre is important, as is the need to access and

use computers, telephones, printing and copying facilities. Ideally, personal computers available for public use should be equipped with assistive technologies.

Work centres and desks should accommodate wheelchair users. Operating controls and signage should meet the requirements of Section M and Section O.

DESIGN STANDARDS

H	Business Centres	Level 1	Level 2	Level 3	Level 4
H1	Primary access routes within the business centre are at least 920 mm wide.	<input type="checkbox"/> Yes	<input type="checkbox"/> Yes		
H2	Primary access routes within the business centre are at least 1100 mm wide.			<input type="checkbox"/> Yes	<input type="checkbox"/> Yes
H3	Seating spaces for persons in wheelchairs have a clear floor area of at least 750 x 1200 mm (480 mm of the 1200 mm may be kneespace under the table).	<input type="checkbox"/> Yes	<input type="checkbox"/> Yes		
H4	Seating spaces for persons in wheelchairs incorporate a clear floor area of at least 760 x 1370 mm (480 mm of the 1370 mm may be kneespace under the table), and a kneespace of at least 750 mm wide x 685 mm high x 480 mm deep.			<input type="checkbox"/> Yes	<input type="checkbox"/> Yes
H5	Wheelchair seating spaces are level, and are located on accessible routes. Accessible routes do not overlap wheelchair seating spaces.	<input type="checkbox"/> Yes	<input type="checkbox"/> Yes	<input type="checkbox"/> Yes	<input type="checkbox"/> Yes
H6	The top of counters and tables are at a height between 710-865 mm.	<input type="checkbox"/> Yes	<input type="checkbox"/> Yes	<input type="checkbox"/> Yes	<input type="checkbox"/> Yes
H7	The illumination level at work surfaces is at least 200 lux.	<input type="checkbox"/> Yes	<input type="checkbox"/> Yes	<input type="checkbox"/> Yes	<input type="checkbox"/> Yes
H8	Switches and operable controls are located 400-1200 mm from the floor and have clear floor space of at least 750 x 1200 mm provided in front of the control (with the control centred on the clear space).	<input type="checkbox"/> Yes	<input type="checkbox"/> Yes		
H9	Switches and operable controls are located 400-1200 mm from the floor and have clear floor space of at least 760 x 1370 mm provided in front of the control (with the control centred on the clear space).			<input type="checkbox"/> Yes	<input type="checkbox"/> Yes
H10	Switches and operable controls are operable using one hand without tight grasping, pinching or twisting of the wrist.	<input type="checkbox"/> Yes	<input type="checkbox"/> Yes	<input type="checkbox"/> Yes	<input type="checkbox"/> Yes
H11	Switches and operable controls are colour contrasted with the surface upon which they are located.	<input type="checkbox"/> Yes	<input type="checkbox"/> Yes	<input type="checkbox"/> Yes	<input type="checkbox"/> Yes
H12	The illumination level at switches and controls is at least 100 lux, and is 200 lux where reading is required.	<input type="checkbox"/> Yes	<input type="checkbox"/> Yes	<input type="checkbox"/> Yes	<input type="checkbox"/> Yes
H13	At least one telephone in the business centre features a volume control.		<input type="checkbox"/> Yes	<input type="checkbox"/> Yes	<input type="checkbox"/> Yes
H14	At least one telephone in the business centre features a TTY device.				<input type="checkbox"/> Yes
COMPLIANCE LEVEL		<input type="checkbox"/> L1	<input type="checkbox"/> L2	<input type="checkbox"/> L3	<input type="checkbox"/> L4

Recreation Areas

RATIONALE

Opportunities for recreation, leisure and active sport participation should be available to all guests in a facility. Access should be provided to all activity spaces, gymnasias, fitness facilities, lockers, change rooms and showers. At least some of the storage units available within recreation facilities should be usable by people who use wheelchairs. The provision of lockers at lower heights serves the reach restrictions of children and people who use wheelchairs. The operating mechanisms should also be at an appropriate height and operable by individuals

with restrictions in hand dexterity and be well contrasted.

Swimming Pools, Whirlpools and Fitness Areas

Primary considerations for accommodating persons using swimming pools who have mobility impairments include accessible change facilities and a means of access into the water. Ramped access into the water is preferred over lift access, as it promotes integration (everyone will use the ramp) and independence. Handrails to provide support while entering the water are

appreciated by everyone. Many persons who are visually impaired will benefit from colour and textural cues along primary routes of travel and at potentially dangerous locations, such as at the edge of the pool, at steps into the pool and at railings.

Fitness areas should provide a minimum clear route throughout the facility and provide a locker area that meets space requirements, offers an accessible shower area and provides lockers at an appropriate height with well contrasted signage.

DESIGN STANDARDS

I Recreation Areas – General		Level 1	Level 2	Level 3	Level 4
11	The floor and ground surfaces are stable, firm and slip resistant.	_ Yes	_ Yes	_ Yes	_ Yes
12	An exercise room is not provided. OR If an exercise room is provided, it is located on an accessible route, an accessible entrance is provided, and facilities within the exercise room are located on an accessible route. (Refer to Sections C and D for design standards for accessible routes and doors)	_ Yes	_ Yes	_ Yes	_ Yes
13	Change facilities are not provided. OR If change facilities are provided, they are located on an accessible route, an accessible entrance is provided, and facilities within change areas are located on an accessible route. (Refer to Sections C and D for design standards for accessible routes and doors)	_ Yes	_ Yes	_ Yes	_ Yes
14	Lockers are not provided. OR Where lockers are provided, at least 5% of lockers (but no less than one) are on an accessible route, feature a clear space in front of at least 1500 x 1500 mm, have shelves and coat hooks located at a maximum height of 1200 mm, and incorporate locks no higher than 1200 mm. (Refer to Section C for design standards for accessible routes)	_ Yes	_ Yes	_ Yes	_ Yes
15	Washrooms are not provided. OR Accessible washroom facilities are provided. (Refer to Section K for design standards for accessible washrooms)	_ Yes	_ Yes	_ Yes	_ Yes
COMPLIANCE LEVEL		_ L1	_ L2	_ L3	_ L4

DESIGN STANDARDS

I Recreation Areas – Swimming Pools	Level 1	Level 2	Level 3	Level 4
16 Swimming pool facilities are located on an accessible route, an accessible entrance is provided, and facilities within swimming pool areas are located on an accessible route. (Refer to Sections C and D for design standards for accessible routes and doors).	_ Yes	_ Yes	_ Yes	_ Yes
17 A ramp sloped no steeper than 1 in 12 (8.3%) provides access into the pool, or a pool lift is provided.				_ Yes
18 Stair access into the pool is not provided. OR Stairs into the pool are clearly marked with colour contrasted edges on risers and treads, and stairs are equipped with at least one handrail.	_ Yes	_ Yes	_ Yes	_ Yes
19 The depth of the pool is clearly indicated on the edge of the pool.	_ Yes	_ Yes	_ Yes	_ Yes
110 Pool areas incorporate non-slip floor surfaces.	_ Yes	_ Yes	_ Yes	_ Yes
111 Pool boundaries are clearly defined by both a textural change and colour contrast.		_ Yes	_ Yes	_ Yes
112 There is adequate drainage on the pool deck to drain water quickly.	_ Yes	_ Yes	_ Yes	_ Yes
113 Tie-off devices for lane markers (if provided) and storage for water rescue devices do not create a tripping hazard.	_ Yes	_ Yes	_ Yes	_ Yes
COMPLIANCE LEVEL	_ L1	_ L2	_ L3	_ L4

Guest Rooms and Suites

RATIONALE

Accessible rooms should be dispersed throughout the hotel facility and their locations indicated on the facility's evacuation plan.

An accessible room/suite should have two door viewers installed in the door and should also be equipped with both visual and audible security and fire alarm systems.

Lack of manoeuvring space beside the guest room door is one of the most common accessibility problems. Accessible guest rooms should feature appropriate circulation space throughout, as well as wheelchair turning space on at least one side of the bed, at the clothes closet, and within the bathroom. Additionally, doors must be configured with appropriate clear floor space adjacent to the latch side of the exit door.

Key Card Access

Where card-access systems are selected as a means of entry, the systems and components selected should be usable by persons with varying abilities, including persons with reduced manual dexterity, limited vision or reach limitations. The use of heat-sensing activation buttons should be avoided.

Closets

The heights of storage and shelving should address the lower eye level and reach capabilities of children or persons using wheelchairs.

Balconies Patios and Porches

Where balconies, porches, patios or terraces are provided, consideration should be given to providing a variety of levels of sun and wind protection, as an aid to seniors and other persons with disabilities. Thresholds at balcony doors should be minimal.

Ideally, direct access should be provided from the building to porches, terraces and patios – nobody should have to travel along lengthy and circuitous exterior routes. Doors opening out onto balconies should meet clear width requirements and should be located to open against a side wall or railing. Railings and guards at balconies shall comply with provincial building code requirements and should allow for clear vision below the rail for persons seated in wheelchairs. Railings and guards should have pronounced colour contrast from the surrounding environment.

In-Room or Suite Washrooms

Slip-resistant surfaces are an important feature and will benefit everyone, including those with disabilities. Grab bars also provide enhanced safety and stability for everyone. Operating controls should be intuitive and usable by persons with limitations in hand strength or dexterity.

Some people with disabilities may prefer a bath, while others prefer a shower. People with more significant mobility impairments will generally require a wheel-in shower.

Shower stalls require grab bars and non-slip surfaces. Equipment such as a hand-held shower and a bath seat are required by some people with disabilities, but add convenience for everyone. Equipment that contrasts in colour from the shower stall itself assists individuals with a visual impairment. Roll-in or curbless shower stalls eliminate the necessity of stepping over a threshold and are essential for persons with disabilities who use a shower chair, bench or wheelchair.

Accessible bathtubs should feature appropriate clear space in front, as well as grab bars and non-slip surfaces.

Kitchenettes

Guest rooms equipped with kitchenettes should be functional for the widest variety of users possible. Operating mechanisms should be operable with one hand and with minimal strength required. Sinks should provide sufficient clear space in front to be usable by persons in wheelchairs and should feature lever type faucet handles.

Coffee areas for in-room service should be provided at an appropriate height for standing and seated use and there should be an electrical outlet within reach. A coffee machine that is easy to operate is appreciated by everyone.

DESIGN STANDARDS

J	Rooms	Level 1	Level 2	Level 3	Level 4
J1	The number of accessible guest rooms provided complies with Table 7.	_ Yes	_ Yes		
J2	The number of accessible guest rooms provided complies with Table 8.		_ Yes	_ Yes	_ Yes
J3	Guest rooms are dispersed among the various classes of guest rooms, and provide choices of type of guest room, number of beds, and amenities comparable to the choices provided to other guests.			_ Yes	_ Yes
J4	Rooms do not feature door viewers. OR Guest rooms required by J1 or J2 have a second door viewer located at a height between 1000-1200 mm from the floor.		_ Yes	_ Yes	_ Yes
J5	Rooms do not feature door bells or an intercom system. OR Guest rooms required by J1 or J2 that feature a door bell or intercom controls are at a height between 1000-1100 mm from the floor.	_ Yes	_ Yes	_ Yes	_ Yes
J6	Guest rooms required by J1 or J2 feature door bells or intercom systems which, if connected to a security release door opener, have a visual and audible signal at the entrance to indicate a "go ahead".				_ Yes
J7	Guest rooms required by J1 or J2 feature door bells or intercom systems which are connected to a communication system within the unit.				_ Yes
J8	Windows in guest rooms have sills no higher from the floor than 750 mm.		_ Yes	_ Yes	_ Yes

Table 7 – Accessible Guest Bedrooms

Total Number of Guest Bedrooms or Suites	Guest Rooms with Mobility Features			Number of Guest Bedrooms or Suites that incorporate Communication Features
	Minimum number of Required Rooms Without Roll-in Shower (i.e. Bathtub or Transfer-type Shower)	Minimum number of Required Rooms With Roll-in Shower	Total Number of Rooms Required	
1-25	1	0	1	0
26-50	2	0	2	1
51-100	2	1	2	3
101-200	2	1	3	4
201-300	2	2	4	6
301-400	3	2	5	8
401-500	4	2	6	10
More than 500	0.67% of total plus 1	0.33% of total plus 1	1% of total plus 2	2% of total

DESIGN STANDARDS

J	Rooms - continued	Level 1	Level 2	Level 3	Level 4
J9	Windows in guest rooms do not open. OR Windows in guest rooms have opening and locking mechanisms located at a height between 400-1200 mm from the floor.	_ Yes	_ Yes	_ Yes	_ Yes
J10	Guest rooms with mobility features do not feature patios, balconies or terraces. OR Exterior spaces, including patios, terraces and balconies that serve the guest room are accessible.	_ Yes	_ Yes	_ Yes	_ Yes
J11	Guest rooms with mobility features do not feature living and dining areas. OR Living and dining areas are accessible, or they are not featured in guest rooms.	_ Yes	_ Yes	_ Yes	_ Yes
J12	Switches and operable controls are located at a height between 400-1200 mm from the floor and have clear floor space of at least 750 x 1200 mm provided in front of the control (with the control centred on the clear space).	_ Yes	_ Yes		
J13	Switches and operable controls are located at a height 400-1200 mm from the floor and have clear floor space of at least 760 x 1370 mm provided in front of the control (with the control centred on the clear space).			_ Yes	_ Yes
J14	Switches and operable controls are operable using one hand without tight grasping, pinching or twisting of the wrist.	_ Yes	_ Yes	_ Yes	_ Yes

Table 8 – Accessible Guest Bedrooms

Total Number of Guest Bedrooms or Suites	Guest Rooms with Mobility Features			Number of Guest Bedrooms or Suites that incorporate Communication Features
	Minimum number of Required Rooms Without Roll-in Shower (i.e. Bathtub or Transfer-type Shower)	Minimum number of Required Rooms With Roll-in Shower	Total Number of Rooms Required	
1-25	1	0	1	2 (None required if only one bedroom or suite is provided)
26-50	2	0	2	4
51-75	3	1	4	7
76-100	4	1	5	9
101-150	5	2	7	12
151-200	6	2	8	14
201-300	7	3	10	17
301-400	8	4	12	20
401-500	9	5	13	22
501-1000	2% of total	1% of total	3% of total	5% of total
More than 1000	20 + 1 for each 100 or fraction thereof over 1000	10 + 1 for each 100 or fraction thereof over 1000	30 + 2 for each 100 or fraction thereof over 1000	50 + 3 for each 100 over 1000

DESIGN STANDARDS

J	Rooms - continued	Level 1	Level 2	Level 3	Level 4
J15	Switches and operable controls are colour contrasted with the surface upon which they are located.	<input type="checkbox"/> Yes	<input type="checkbox"/> Yes	<input type="checkbox"/> Yes	<input type="checkbox"/> Yes
J16	The illumination level is at least 100 lux at switches and controls and 200 lux where reading is required.	<input type="checkbox"/> Yes	<input type="checkbox"/> Yes	<input type="checkbox"/> Yes	<input type="checkbox"/> Yes
J17	In guest rooms at least one sleeping area incorporates a clear floor space of 760 x 1370 mm, positioned for a parallel approach to the side of the bed.	<input type="checkbox"/> Yes	<input type="checkbox"/> Yes	<input type="checkbox"/> Yes	<input type="checkbox"/> Yes
J18	In guest room accommodations having more than 25 beds, at least 5% of all rooms provide the minimum clear floor space required by J17.		<input type="checkbox"/> Yes	<input type="checkbox"/> Yes	<input type="checkbox"/> Yes
J19	Guest rooms with mobility features incorporate beds with open bed frames and lockable wheels.			<input type="checkbox"/> Yes	<input type="checkbox"/> Yes
J20	At least one accessible toilet fixture, one accessible lavatory and one accessible bathtub or shower is provided in or associated with, each guest room with mobility features. - (Refer to Section K for design standards for accessible Toilets (K31-K41), Lavatories (K68-K78 & K85), Showers (K86-K98) and Bathtubs (K99-K109)).	<input type="checkbox"/> Yes	<input type="checkbox"/> Yes	<input type="checkbox"/> Yes	<input type="checkbox"/> Yes
J21	In guest rooms with communication features, alarms include both audible and visual signals. (Portable units are acceptable)	<input type="checkbox"/> Yes	<input type="checkbox"/> Yes	<input type="checkbox"/> Yes	<input type="checkbox"/> Yes
J22	In guest rooms with communication features, visible notification devices are provided to alert room occupants of incoming telephone calls, a door knock, or bell. The notification devices are NOT connected to visual alarm signal appliances.	<input type="checkbox"/> Yes	<input type="checkbox"/> Yes	<input type="checkbox"/> Yes	<input type="checkbox"/> Yes
J23	In guest rooms with communication features, telephones have volume controls.		<input type="checkbox"/> Yes	<input type="checkbox"/> Yes	<input type="checkbox"/> Yes
J24	In guest rooms with communication features, an electrical outlet is provided within 1200 mm of the telephone to facilitate the use of a TTY.	<input type="checkbox"/> Yes	<input type="checkbox"/> Yes	<input type="checkbox"/> Yes	<input type="checkbox"/> Yes
J25	At least one, but no more than 10% of the guest rooms which provide mobility features, also provides communication features.		<input type="checkbox"/> Yes	<input type="checkbox"/> Yes	<input type="checkbox"/> Yes
J26	In guest rooms with mobility features, at least one of each type of storage is accessible, including closets, cabinets, clothes rails, drawers and shelves.	<input type="checkbox"/> Yes	<input type="checkbox"/> Yes	<input type="checkbox"/> Yes	<input type="checkbox"/> Yes

DESIGN STANDARDS

J	Rooms - continued	Level 1	Level 2	Level 3	Level 4
J27	In guest rooms with mobility features, clothes closets shall have a clear floor area in front of them of at least 750 x 1200 mm.	<input type="checkbox"/> Yes	<input type="checkbox"/> Yes		
J28	In guest rooms with mobility features, clothes closets shall have a clear floor area in front of them of at least 760 x 1370 mm.			<input type="checkbox"/> Yes	<input type="checkbox"/> Yes
J29	In guest rooms with mobility features, clothes closets shall have at least one clothes rail located at a height between 1200-1400 mm from the floor and, where shelving is provided, it shall be located at a height between 400-1200 mm from the floor.	<input type="checkbox"/> Yes	<input type="checkbox"/> Yes	<input type="checkbox"/> Yes	<input type="checkbox"/> Yes
J30	Closets do not incorporate hinged doors. OR In guest rooms with mobility features, closets have a door that swings outward.	<input type="checkbox"/> Yes	<input type="checkbox"/> Yes	<input type="checkbox"/> Yes	<input type="checkbox"/> Yes
J31	In guest rooms with mobility features, the size and configuration of vanity units and countertops is comparable to similar facilities in non-accessible rooms.		<input type="checkbox"/> Yes	<input type="checkbox"/> Yes	<input type="checkbox"/> Yes
J32	Bathrooms do not feature storage shelves. OR In guest rooms with mobility features, storage shelves are located no more than 1200 mm above the floor.	<input type="checkbox"/> Yes	<input type="checkbox"/> Yes	<input type="checkbox"/> Yes	<input type="checkbox"/> Yes
J33	Bathrooms do not feature towel bars. OR In guest rooms with mobility features, towel bars are located no more than 1100 mm above the floor, feature a clear floor area in front of it of at least 750 x 1200 mm, and is within a horizontal reach of 500 mm.	<input type="checkbox"/> Yes	<input type="checkbox"/> Yes		
J34	Bathrooms meet the requirements of J33 and feature a clear floor area in front of it of at least 760 x 1370 mm, and is within a horizontal reach of 500 mm.			<input type="checkbox"/> Yes	<input type="checkbox"/> Yes
J35	Guest rooms with mobility features, feature a 1500 mm clear diameter turning space.		<input type="checkbox"/> Yes	<input type="checkbox"/> Yes	
J36	Guest rooms with mobility features, feature a 2000 mm clear diameter turning space.				<input type="checkbox"/> Yes
COMPLIANCE LEVEL		<input type="checkbox"/> L1	<input type="checkbox"/> L2	<input type="checkbox"/> L3	<input type="checkbox"/> L4

DESIGN STANDARDS

J	Rooms – Kitchenettes in Guest Rooms with Mobility Features	Level 1	Level 2	Level 3	Level 4
J37	The clearance between counters and all opposing base cabinets, countertops, appliances or walls is at least 1500 mm.	<input type="checkbox"/> Yes	<input type="checkbox"/> Yes	<input type="checkbox"/> Yes	<input type="checkbox"/> Yes
J38	The clear floor space for approach to all appliances or the operable part of controls is at least 750 x 1200 mm.	<input type="checkbox"/> Yes	<input type="checkbox"/> Yes		
J39	The clear floor space for approach to all appliances or the operable part of controls is at least 760 x 1370 mm.			<input type="checkbox"/> Yes	<input type="checkbox"/> Yes
J40	Operable parts of switches and controls are located 400-1200 mm above the floor.	<input type="checkbox"/> Yes	<input type="checkbox"/> Yes	<input type="checkbox"/> Yes	<input type="checkbox"/> Yes
J41	Operable parts of switches controls are operable using one hand without tight grasping, pinching or twisting of the wrist.	<input type="checkbox"/> Yes	<input type="checkbox"/> Yes	<input type="checkbox"/> Yes	<input type="checkbox"/> Yes
J42	The kitchenette features at least one area of work surface at least 760 mm wide x 600 mm deep and 730-860 mm high, with kneespace below at least 750 mm wide x 685 mm high x 480mm deep, AND The work surface features clear floor space in front of it at least 750 x 1200 mm (480 mm of which may be below the work surface).	<input type="checkbox"/> Yes	<input type="checkbox"/> Yes		
J43	The kitchenette features at least one work surface which meets the requirements of J42, AND The work surface features clear floor space in front of it of at least 760 x 1370 mm (480 mm of which may be below the work surface).			<input type="checkbox"/> Yes	<input type="checkbox"/> Yes
J44	Sinks and work surfaces do not have sharp or abrasive surfaces under them.	<input type="checkbox"/> Yes	<input type="checkbox"/> Yes	<input type="checkbox"/> Yes	<input type="checkbox"/> Yes
J45	Electrical receptacles are provided at the side or in front of the accessible work surface.	<input type="checkbox"/> Yes	<input type="checkbox"/> Yes	<input type="checkbox"/> Yes	<input type="checkbox"/> Yes
J46	Kitchen cabinets, drawers and shelves have at least one shelf located no higher than 840 mm from the floor.	<input type="checkbox"/> Yes	<input type="checkbox"/> Yes	<input type="checkbox"/> Yes	<input type="checkbox"/> Yes
J47	Upper kitchen cabinets and drawers have "D" type door pulls mounted close to the bottom of the cabinet doors.	<input type="checkbox"/> Yes	<input type="checkbox"/> Yes	<input type="checkbox"/> Yes	<input type="checkbox"/> Yes
J48	The kitchen sink rim height is 810-860 mm above the floor.	<input type="checkbox"/> Yes	<input type="checkbox"/> Yes	<input type="checkbox"/> Yes	<input type="checkbox"/> Yes
J49	Kneespace under the sink is at least 760 mm wide x 685 mm high x 480 mm deep, with additional toe-space.	<input type="checkbox"/> Yes	<input type="checkbox"/> Yes	<input type="checkbox"/> Yes	<input type="checkbox"/> Yes

DESIGN STANDARDS

J	Rooms – Kitchenettes in Guest Rooms with Mobility Features - continued	Level 1	Level 2	Level 3	Level 4
J50	Sinks feature a clear floor space in front of at least 750 x 1200 mm (480 mm of which may be below the sink).	<input type="checkbox"/> Yes	<input type="checkbox"/> Yes		
J51	Sinks feature a clear floor space in front of at least 760 x 1370 mm (480 mm of which may be below the sink).			<input type="checkbox"/> Yes	<input type="checkbox"/> Yes
J52	The sink has hot water and drain pipes offset to the rear which do not abut the clear kneespace.	<input type="checkbox"/> Yes	<input type="checkbox"/> Yes	<input type="checkbox"/> Yes	<input type="checkbox"/> Yes
J53	Faucets feature a lever-type handle that can be used with a closed fist, or automatically activated faucets are used.	<input type="checkbox"/> Yes	<input type="checkbox"/> Yes	<input type="checkbox"/> Yes	<input type="checkbox"/> Yes
J54	The kitchen does not incorporate a range, oven, or cook top. OR Where the kitchen does incorporate a range, oven, or cook top, they shall have a top surface height of 810-860 mm and have controls located which do not require reaching across the burners to operate.	<input type="checkbox"/> Yes	<input type="checkbox"/> Yes	<input type="checkbox"/> Yes	<input type="checkbox"/> Yes
J55	The kitchen does not incorporate a range or cook top. OR Where the kitchen does incorporate a cook top or range, it shall have an adjacent work surface at the same height as the cook top or range, with a width of at least 400 mm.	<input type="checkbox"/> Yes	<input type="checkbox"/> Yes	<input type="checkbox"/> Yes	<input type="checkbox"/> Yes
J56	The kitchen does not incorporate a refrigerator with a freezer compartment above. OR Where the kitchen does incorporate a refrigerator with a freezer, the lower shelf in the freezer compartment of the refrigerator is no higher than 1100 mm.	<input type="checkbox"/> Yes	<input type="checkbox"/> Yes	<input type="checkbox"/> Yes	<input type="checkbox"/> Yes
COMPLIANCE LEVEL		<input type="checkbox"/> L1	<input type="checkbox"/> L2	<input type="checkbox"/> L3	<input type="checkbox"/> L4

Washrooms

RATIONALE

Although most people who are disabled use toilet and bathing facilities independently, some people do require assistance. If the assistant is of the same gender, providing assistance is easy in a gender-specific public washroom. In other cases, an individual or family washroom is required.

Ideally all common-use public washrooms should be accessible. In addition, an individual unisex/family washroom should also be provided close to the common-use public washrooms, whenever possible.

Door swing configurations are extremely important as people with disabilities may not be able to exit the washroom if there is insufficient manoeuvring space. Door swings are also critical to ensure that a person using a wheelchair can enter the washroom stall, turn, and close the door behind them and get out. Doors in series (i.e. vestibules) must be large enough to accommodate a wheelchair, without encroaching on the space required for any door that swings into the space.

Avoid stylized signage that can be misinterpreted. Large, well contrasted, tactile and Braille signage with a symbol is preferred. Features such as colour contrasting doorframes and door hardware will help everyone identify the location of doors and door hardware – but they are particularly useful for people who are visually impaired.

As washrooms are places that people usually find themselves alone, washrooms should be equipped with a visual alert signalling device (connected to the main fire alarm system) to alert people who are deaf, deafened or hard of hearing of an emergency situation. Emergency call systems are also an excellent feature but a system must be in place to respond to the call.

Toilet Stalls and Urinals

The manoeuvrability of a wheelchair or scooter is a principal consideration in the design of an accessible stall. The increased size of an accessible stall is required to ensure that there is sufficient space to facilitate the proper placement of a wheelchair or scooter to accommodate someone making a transfer onto the toilet from a wheelchair. Not only is space required for the user and their wheelchair, but there will be times where an individual requires assistance and the stall will have to accommodate a second person. Doors normally swing outward for safety reasons and space considerations, but this may also make it difficult to close the door. A handle mounted part way along the door will make it easier for someone to close the door behind them.

Automatic flush controls are preferred. If flush controls are not automatic, then consideration must be given to the location of the flush mechanism, as well as a person's hand strength and dexterity to operate it. Strategic placement of

grab bars makes sitting, standing and transfers between the toilet and the wheelchair safer.

A clear floor space is required in front of urinals as some people using wheelchairs can pull themselves up to a standing position using grab bars. Others may use the grab bar to steady themselves. Floor-mounted urinals make it easier to drain appliances. Flush controls should be the lever-handle type but an automatic flush mechanism is preferred.

Lavatories

At least one lavatory in each accessible washroom should be accessible. Most individuals prefer lever style handles on faucets. While automatic faucets might initially confuse some individuals, their ease of use generally makes them more universally accessible.

People who use wheelchairs require a lower counter height and clearance for knees under the counter. This lower counter also better serves children. The recessing of pipes below the lavatory protects an individual in a wheelchair whose legs might come into contact with hot water pipes. This is particularly important when a disability impairs sensation such that the individual would not sense that their legs were being burned.

Washroom accessories should be selected and located to address a broad range of reach, hand strength and dexterity abilities.

DESIGN STANDARDS

K	Washrooms –Public Washrooms	Level 1	Level 2	Level 3	Level 4
K1	Washroom entry doors feature a sign which incorporates the International Symbol of Access. OR Where public washrooms do not incorporate entry doors, signs which incorporate the International Symbol of Access are located on the walls outside of the entrance opening.	_ Yes	_ Yes	_ Yes	_ Yes
K2	There is accessible signage at the entrance indicating the men's and women's washrooms.	_ Yes	_ Yes	_ Yes	_ Yes
K3	Washrooms that are not accessible feature signage indicating the location of the nearest accessible washroom.		_ Yes	_ Yes	_ Yes
K4	Washrooms incorporate entrance doors in compliance with Section D. OR Washrooms do not feature entrance doors.	_ Yes	_ Yes	_ Yes	_ Yes
K5	Washroom entrances do not incorporate two doors in a series (i.e. vestibules). OR The distance between two doors in a series, plus the width of any door swing into the space, is at least 1200 mm.	_ Yes			
K6	Washroom entrances do not incorporate two doors in a series (i.e. vestibules). OR The distance between two doors in a series, plus the width of any door swing into the space, is at least 1370 mm.		_ Yes	_ Yes	_ Yes
K7	Primary access routes within the washroom connect all accessible facilities and are at least 920 mm wide.	_ Yes	_ Yes		
K8	Primary access routes within the washroom connect all accessible facilities and are at least 1100 mm wide.			_ Yes	
K9	Primary access routes within the washroom connect all accessible facilities and are at least 1500 mm wide.				_ Yes
K10	Washrooms feature at least one clear manoeuvring floor area at least 1500 x 1500 mm.	_ Yes	_ Yes		
K11	Washrooms feature at least one clear manoeuvring floor area at least 2000 x 2000 mm.			_ Yes	_ Yes
K12	Washrooms feature at least one accessible toilet stall in compliance with K16 – K30.	_ Yes	_ Yes	_ Yes	_ Yes
K13	At least one male and one female washroom feature at least two accessible toilet stalls in compliance with K16 – K30, one of which is configured with the space for the wheelchair on the left side of the toilet fixture, the other configured with the space for the wheelchair on the right side.				_ Yes
K14	Washrooms feature at least one accessible lavatory in compliance with K68 – K85.	_ Yes	_ Yes	_ Yes	_ Yes
K15	Male washrooms feature at least one accessible urinal in compliance with K58 – K67. OR Male washrooms do not incorporate urinals.	_ Yes	_ Yes	_ Yes	_ Yes
	COMPLIANCE LEVEL	_ L1	_ L2	_ L3	_ L4

DESIGN STANDARDS

K	Public Washrooms – Public Washrooms -Accessible Toilet Stalls	Level 1	Level 2	Level 3	Level 4
K16	Toilet stalls are at least 1600 mm wide x 1500 deep mm.	<input type="checkbox"/> Yes	<input type="checkbox"/> Yes	<input type="checkbox"/> Yes	<input type="checkbox"/> Yes
K17	Toilet stalls are at least 1830 mm wide x 1830 mm deep.				<input type="checkbox"/> Yes
K18	Toilet stalls feature doors that are aligned with the wheelchair transfer space adjacent to the toilet.		<input type="checkbox"/> Yes	<input type="checkbox"/> Yes	<input type="checkbox"/> Yes
K19	Toilet stall doors are self-closing so that, when at rest, the door is ajar by not more than 50 mm.	<input type="checkbox"/> Yes	<input type="checkbox"/> Yes	<input type="checkbox"/> Yes	<input type="checkbox"/> Yes
K20	The clear opening width at toilet stall doors is no less than 810 mm.	<input type="checkbox"/> Yes	<input type="checkbox"/> Yes		
K21	The clear opening width at toilet stall doors is no less than 900 mm.			<input type="checkbox"/> Yes	
K22	The clear opening width at toilet stall doors is no less than 950 mm.				<input type="checkbox"/> Yes
K23	The clear floor space in front of toilet stall doors is at least 1400 mm deep. (It is at least 1700 mm deep where it faces an outward swinging washroom door.)	<input type="checkbox"/> Yes	<input type="checkbox"/> Yes	<input type="checkbox"/> Yes	<input type="checkbox"/> Yes
K24	The clear floor space in front of toilet stall doors is at least 1500 x 1500 mm.	<input type="checkbox"/> Yes	<input type="checkbox"/> Yes		
K25	The clear floor space in front of toilet stall doors is at least 2000 x 2000 mm.			<input type="checkbox"/> Yes	<input type="checkbox"/> Yes
K26	Locks on toilet stall doors are capable of being latched on the inside, using one hand and without tight grasping, pinching, or twisting of the wrist, and released from the outside in case of emergency.	<input type="checkbox"/> Yes	<input type="checkbox"/> Yes	<input type="checkbox"/> Yes	<input type="checkbox"/> Yes
K27	Toilet stall doors feature a D-type door pull on the inside which is at least 140 mm long, located with its midpoint 200-300 mm from the hinged side of the door and at a height between 900-1000 mm from the floor.	<input type="checkbox"/> Yes	<input type="checkbox"/> Yes	<input type="checkbox"/> Yes	<input type="checkbox"/> Yes
K28	Toilet stall doors feature a D-type door pull on the outside, which is at least 140 mm long, located with its midpoint 120-220 mm from the latch edge of the door and at a height between 900-1000 mm from the floor.	<input type="checkbox"/> Yes	<input type="checkbox"/> Yes	<input type="checkbox"/> Yes	<input type="checkbox"/> Yes
K29	Toilet stalls feature at least one coat hook located not more than 1200 mm high and projecting not more than 40 mm from the wall.	<input type="checkbox"/> Yes	<input type="checkbox"/> Yes	<input type="checkbox"/> Yes	<input type="checkbox"/> Yes
K30	Toilet stalls feature an accessible toilet fixture in compliance with K31–K41.	<input type="checkbox"/> Yes	<input type="checkbox"/> Yes	<input type="checkbox"/> Yes	<input type="checkbox"/> Yes
COMPLIANCE LEVEL		<input type="checkbox"/> L1	<input type="checkbox"/> L2	<input type="checkbox"/> L3	<input type="checkbox"/> L4

DESIGN STANDARDS

K	Washrooms – Accessible Toilet Fixtures	Level 1	Level 2	Level 3	Level 4
K31	The top of toilet seats are located at a height between 400 – 460 mm from the floor.	_ Yes	_ Yes	_ Yes	_ Yes
K32	Toilet seats are not spring activated.	_ Yes	_ Yes	_ Yes	_ Yes
K33	The centreline of toilet fixtures is 460 – 480 mm from the adjacent wall or partition.	_ Yes	_ Yes	_ Yes	_ Yes
K34	Toilet fixtures feature a clear space for a wheelchair beside the toilet of at least 900 mm wide and at least 1500 mm deep. (Measured from the side wall/partition to the edge of the toilet seat)	_ Yes	_ Yes	_ Yes	_ Yes
K35	Flush controls mounted on the transfer side of the toilet, located at a height between 600-1100 mm above the floor. OR The toilet fixture features electronic flush controls.	_ Yes	_ Yes	_ Yes	_ Yes
K36	The flush controls are operable using one hand without tight grasping, pinching, grasping or twisting of the wrist. OR The toilet fixture features electronic flush controls.	_ Yes	_ Yes	_ Yes	
K37	The toilet fixture features electronic flush controls.				_ Yes
K38	Toilet fixtures feature grab bars in compliance with Table 9.	_ Yes	_ Yes	_ Yes	_ Yes
K39	Toilet fixtures feature a vertical side grab bar, at least 600 mm long, located no more than 250 mm in front of the toilet seat with its lower end 50-60 mm above the horizontal grab bar.		_ Yes	_ Yes	_ Yes
K40	Toilet fixtures feature an additional fold-down grab bar on the wheelchair transfer side of the toilet fixture, at least 760 mm long, mounted on the rear wall. The centreline of the grab bar is located 420-440 mm from the centreline of the toilet, and at a height between 840-920 mm from the floor.				_ Yes
K41	Toilet fixtures feature toilet paper dispensers in line with the front of the toilet seat, mounted at a height between 600–700 mm from the floor.	_ Yes	_ Yes	_ Yes	_ Yes
COMPLIANCE LEVEL		_ L1	_ L2	_ L3	_ L4

Table 9 – Grab Bars at Accessible Toilet Fixtures

General Grab Bar Characteristics	Height of Grab Bars	Side Grab Bar Configuration	Rear Grab Bar Configuration
<ul style="list-style-type: none"> - Slip-resistant - 30-40 diameter - Space between grab bar and adjacent surface of 35-40 	840-920 from the floor	Mounted horizontally on the wall closest to the toilet fixture, extending at least 450 in each direction from the most forward point of the toilet fixture.	At least 600 long, mounted horizontally on the wall behind the toilet fixture, centred on the toilet bowl (For level 1, it is not required where toilet fixture incorporates an attached water tank. Required for Levels 2-4.)

DESIGN STANDARDS

K	Washrooms – Public Individual Accessible Washrooms	Level 1	Level 2	Level 3	Level 4
K42	Entry doors into individual public washrooms feature a sign which incorporates the international symbol of access.	<input type="checkbox"/> Yes	<input type="checkbox"/> Yes	<input type="checkbox"/> Yes	<input type="checkbox"/> Yes
K43	Individual accessible washrooms incorporate entrance doors in compliance with Section D.	<input type="checkbox"/> Yes	<input type="checkbox"/> Yes	<input type="checkbox"/> Yes	<input type="checkbox"/> Yes
K44	Washroom doors are capable of being locked from the inside using one hand and without tight grasping, pinching, or twisting of the wrist, and are capable of being released from the outside in case of an emergency.	<input type="checkbox"/> Yes	<input type="checkbox"/> Yes	<input type="checkbox"/> Yes	<input type="checkbox"/> Yes
K45	Washroom doors swing outwards or there is a clear floor space within the washroom of at least 750 x 1200 mm, immediately adjacent to the door, but out of the arc of the door swing.	<input type="checkbox"/> Yes	<input type="checkbox"/> Yes		
K46	Washroom doors swing outwards or there is a clear floor space within the washroom of at least 750 x 1370 mm, immediately adjacent to the door, but out of the arc of the door swing.			<input type="checkbox"/> Yes	<input type="checkbox"/> Yes
K47	Washroom doors feature a D-type door pull on the inside which is at least 140 mm long, located with its midpoint 200-300 mm from the hinged side of the door and at a height between 900-1000 mm from the floor.	<input type="checkbox"/> Yes	<input type="checkbox"/> Yes	<input type="checkbox"/> Yes	<input type="checkbox"/> Yes
K48	Doors swing inward. OR Individual accessible washroom doors feature door closers, spring hinges or gravity hinges so that the door closed automatically.	<input type="checkbox"/> Yes	<input type="checkbox"/> Yes	<input type="checkbox"/> Yes	<input type="checkbox"/> Yes
K49	Individual accessible washrooms feature at least one clear floor area of at least 1500 x 1500 mm.	<input type="checkbox"/> Yes	<input type="checkbox"/> Yes		
K50	Individual accessible washrooms feature at least one clear floor area of at least 2000 x 2000 mm.			<input type="checkbox"/> Yes	<input type="checkbox"/> Yes
K51	Washrooms feature a toilet fixture in conformance with K31-K41.	<input type="checkbox"/> Yes	<input type="checkbox"/> Yes	<input type="checkbox"/> Yes	<input type="checkbox"/> Yes
K52	Washrooms feature a lavatory in conformance with K68-K85.	<input type="checkbox"/> Yes	<input type="checkbox"/> Yes	<input type="checkbox"/> Yes	<input type="checkbox"/> Yes
K53	Individual accessible washrooms have internal dimensions not less than 1700 mm.	<input type="checkbox"/> Yes	<input type="checkbox"/> Yes	<input type="checkbox"/> Yes	<input type="checkbox"/> Yes
K54	Individual accessible washrooms are configured to allow a wheelchair to back in alongside the toilet fixture. (Toilet fixtures shall be installed to feature a clear space for a wheelchair beside the toilet of at least 900 mm wide (measured from the side wall to the edge of the toilet seat) and at least 1500 mm deep.)	<input type="checkbox"/> Yes	<input type="checkbox"/> Yes	<input type="checkbox"/> Yes	<input type="checkbox"/> Yes
K55	Individual accessible washrooms feature at least one coat hook located not more than 1200 mm high and projecting not more than 40 mm from the wall.	<input type="checkbox"/> Yes	<input type="checkbox"/> Yes	<input type="checkbox"/> Yes	<input type="checkbox"/> Yes
K56	Individual accessible washrooms feature at least one shelf located at a height of not more than 1200 mm from the floor.	<input type="checkbox"/> Yes	<input type="checkbox"/> Yes	<input type="checkbox"/> Yes	<input type="checkbox"/> Yes
K57	Individual accessible washrooms feature an emergency alert system, operable without tight grasping, pinching or twisting of the wrist, and reachable by a person who has fallen on the floor.		<input type="checkbox"/> Yes	<input type="checkbox"/> Yes	<input type="checkbox"/> Yes
COMPLIANCE LEVEL		<input type="checkbox"/> L1	<input type="checkbox"/> L2	<input type="checkbox"/> L3	<input type="checkbox"/> L4

DESIGN STANDARDS

K	Washrooms - Public Individual Accessible Washrooms	Level 1	Level 2	Level 3	Level 4
K58	Urinals are wall mounted with the rim at a height no higher than 430 mm above the floor. OR Urinals are floor mounted with the rim level with the finished floor.	<input type="checkbox"/> Yes	<input type="checkbox"/> Yes	<input type="checkbox"/> Yes	<input type="checkbox"/> Yes
K59	The upper rim of urinals is at a minimum height of 860 mm from the floor.	<input type="checkbox"/> Yes	<input type="checkbox"/> Yes	<input type="checkbox"/> Yes	<input type="checkbox"/> Yes
K60	The clear floor space centred in front of the urinal is at least 800 x 1200 mm.	<input type="checkbox"/> Yes			
K61	The clear floor space centred in front of the urinal is at least 800 x 1370 mm.		<input type="checkbox"/> Yes	<input type="checkbox"/> Yes	<input type="checkbox"/> Yes
K62	The approach to urinals is not obstructed by changes in floor level or by privacy screens.	<input type="checkbox"/> Yes	<input type="checkbox"/> Yes	<input type="checkbox"/> Yes	<input type="checkbox"/> Yes
K63	Urinal flush controls are operable using one hand without tight grasping, pinching, or twisting of the wrist. OR Urinals feature electronic flush controls.	<input type="checkbox"/> Yes	<input type="checkbox"/> Yes	<input type="checkbox"/> Yes	<input type="checkbox"/> Yes
K64	Urinal flush controls are located at a height not more than 1200 mm above the floor. OR Urinals feature electronic flush controls.	<input type="checkbox"/> Yes	<input type="checkbox"/> Yes	<input type="checkbox"/> Yes	
K65	Urinal feature electronic flush controls.				<input type="checkbox"/> Yes
K66	Urinals feature vertical grab bars at least 600 mm long, mounted vertically on each side and not more than 380 mm from the centreline of the urinal, with their lower end at a height of 600-650 mm from the floor, and in compliance with the general grab bar characteristics identified in Table 9.	<input type="checkbox"/> Yes	<input type="checkbox"/> Yes	<input type="checkbox"/> Yes	<input type="checkbox"/> Yes
K67	Urinals feature colour-contrasting markers at least 50 mm wide, raised at least 3 mm from the wall surface, centred on and above the urinal, extending no less than 150 mm above the top of the urinal.				<input type="checkbox"/> Yes
COMPLIANCE LEVEL		<input type="checkbox"/> L1	<input type="checkbox"/> L2	<input type="checkbox"/> L3	<input type="checkbox"/> L4

DESIGN STANDARDS

K	Washrooms – Accessible Lavatories	Level 1	Level 2	Level 3	Level 4
K68	Lavatories are located with their centreline at least 460 mm from any side wall.	<input type="checkbox"/> Yes	<input type="checkbox"/> Yes	<input type="checkbox"/> Yes	<input type="checkbox"/> Yes
K69	The lavatory rim shall be located at a height between 810 - 865 mm from the floor.	<input type="checkbox"/> Yes	<input type="checkbox"/> Yes	<input type="checkbox"/> Yes	<input type="checkbox"/> Yes
K70	Lavatories feature a clear floor space in front of at least 750 x 1200 mm (of which a maximum of 480 mm in depth may be under the lavatory).	<input type="checkbox"/> Yes	<input type="checkbox"/> Yes		
K71	Lavatories feature a clear floor space in front of at least 760 x 1370 mm (of which a maximum of 480 mm in depth may be under the lavatory).			<input type="checkbox"/> Yes	<input type="checkbox"/> Yes
K72	The knee clearance at the front of lavatories is at least 760 mm wide x 735 mm high.	<input type="checkbox"/> Yes	<input type="checkbox"/> Yes	<input type="checkbox"/> Yes	<input type="checkbox"/> Yes
K73	At a point 205 mm back from the front of lavatories, the knee clearance is at least 760 mm wide x 685 mm high.	<input type="checkbox"/> Yes	<input type="checkbox"/> Yes	<input type="checkbox"/> Yes	<input type="checkbox"/> Yes
K74	The knee clearance is at least 760 mm wide x 230 mm high in the area between 205-430 mm back from the front of the lavatories.	<input type="checkbox"/> Yes	<input type="checkbox"/> Yes	<input type="checkbox"/> Yes	<input type="checkbox"/> Yes
K75	The toe clearance in front of the lavatory is at least 760 mm wide x 230 mm high.	<input type="checkbox"/> Yes	<input type="checkbox"/> Yes	<input type="checkbox"/> Yes	<input type="checkbox"/> Yes
K76	Lavatories feature insulated pipes where they present a potential burn hazard.	<input type="checkbox"/> Yes	<input type="checkbox"/> Yes	<input type="checkbox"/> Yes	<input type="checkbox"/> Yes
K77	The lavatory water temperature at the lavatories is thermostatically controlled and does not exceed a temperature of 55 degrees C.	<input type="checkbox"/> Yes	<input type="checkbox"/> Yes	<input type="checkbox"/> Yes	<input type="checkbox"/> Yes
K78	Lavatories feature faucets that are operable using one hand without tight grasping, pinching or twisting of the wrist. OR Lavatories feature electronic faucets.	<input type="checkbox"/> Yes	<input type="checkbox"/> Yes	<input type="checkbox"/> Yes	
K79	Hand-operated metering faucets remain open for a minimum time of 10 sec. OR Lavatories do not feature hand-operated metering faucets.	<input type="checkbox"/> Yes	<input type="checkbox"/> Yes	<input type="checkbox"/> Yes	<input type="checkbox"/> Yes
K80	Lavatories feature electronic faucets.				<input type="checkbox"/> Yes
K81	Lavatories feature a soap dispenser located close to the accessible lavatory, at a maximum height of 1200 mm above the floor and within reach of a person seated in a wheelchair.	<input type="checkbox"/> Yes	<input type="checkbox"/> Yes	<input type="checkbox"/> Yes	<input type="checkbox"/> Yes
K82	Lavatories feature a soap dispenser that is operable using one hand without tight grasping, pinching, or twisting of the wrist.	<input type="checkbox"/> Yes	<input type="checkbox"/> Yes	<input type="checkbox"/> Yes	
K83	Lavatories feature electronic soap dispensers.				<input type="checkbox"/> Yes
K84	A paper towel dispenser and disposal, or hand-dryer, is provided close to the accessible lavatory, not more than 1200 mm above the floor and located within reach of a person seated in a wheelchair.	<input type="checkbox"/> Yes	<input type="checkbox"/> Yes	<input type="checkbox"/> Yes	<input type="checkbox"/> Yes
K85	Lavatories feature a mirror with its bottom edge no higher than 1000 mm above the floor.	<input type="checkbox"/> Yes	<input type="checkbox"/> Yes	<input type="checkbox"/> Yes	<input type="checkbox"/> Yes
COMPLIANCE LEVEL		<input type="checkbox"/> L1	<input type="checkbox"/> L2	<input type="checkbox"/> L3	<input type="checkbox"/> L4

DESIGN STANDARDS

K	Washrooms – Accessible Showers	Level 1	Level 2	Level 3	Level 4
K86	Clear floor space in front of roll-in showers is at least 1500 mm long x 900 mm deep; fixtures are permitted to project into that space provided they do not restrict access to the shower.	_ Yes	_ Yes	_ Yes	_ Yes
K87	Clear floor space in front of roll-in showers is at least 1500 mm long x 900 mm deep.		_ Yes	_ Yes	_ Yes
K88	Curb heights or thresholds at roll-in shower stalls do not exceed 13 mm.	_ Yes	_ Yes	_ Yes	
K89	Curb heights or thresholds at roll-in shower stalls do not exceed 6 mm.				_ Yes
K90	Roll-in shower stalls have an interior clear area of at least 900 x 1500 mm.	_ Yes	_ Yes	_ Yes	_ Yes
K91	Shower stall floors are slip resistant when wet.	_ Yes	_ Yes	_ Yes	_ Yes
K92	Shower stall floors slope minimally to provide positive drainage.	_ Yes	_ Yes	_ Yes	_ Yes
K93	Shower stalls feature a hinged seat that is not spring-loaded, at least 450 mm wide x 400 mm deep, mounted 430-480 mm from the floor.	_ Yes	_ Yes	_ Yes	_ Yes
K94	Shower stalls are equipped with a horizontal grab bar at least 600 mm long, mounted at a height between 750-850 mm on the wall opposite the entrance to the shower. The grab bar shall have not less than 300 mm of its length at one side of the seat, and should be in compliance with the general grab bar characteristics identified in Table 10.	_ Yes	_ Yes	_ Yes	_ Yes
K95	Shower stalls are equipped with four grab bars as identified in Table 10.		_ Yes	_ Yes	_ Yes
K96	Shower stalls feature a pressure-equalizing or thermostatic mixing valve, operable using one hand without tight grasping, pinching, or twisting of the wrist. It should be mounted above the grab bar and at a height no higher than 1200 mm from the floor, on the long (back) wall, reachable from the seated position.	_ Yes	_ Yes	_ Yes	_ Yes
K97	Shower stalls feature a hand-held shower head with at least 1500 mm of flexible hose, located so it does not obstruct the use of grab bars. It should be reachable from the seated position, and equipped with a holder so that it can be operated as a fixed shower head.	_ Yes	_ Yes	_ Yes	_ Yes
K98	Shower stalls feature fully recessed soap holders that can be reached from the seated position.	_ Yes	_ Yes	_ Yes	_ Yes
COMPLIANCE LEVEL		_ L1	_ L2	_ L3	_ L4

Table 10 – Grab Bars at Roll-In Showers

General Grab Bar Characteristics	Grab Bar 1	Grab Bar 2	Grab Bar 3	Grab Bar 4
<ul style="list-style-type: none"> - Slip-resistant - 30-40 mm diameter - Space between the grab bar and adjacent surface of 35-40 mm. 	A horizontal grab bar at least 600 mm long, 750-850 mm from the floor, located on the side wall opposite the seat.	A vertical grab bar at least 1000 mm long located on the side wall with the seat, mounted with its lower end 600-650 mm from the floor, 50-80 mm in from the outside edge of the shower stall.	A horizontal grab bar located on the back wall, at least 1000 mm long, 750-850 mm from the floor.	A vertical grab bar at least 750 mm long, mounted with its lower end 50-60 mm above grab bar 3, 400-500 mm from the side wall on which grab bar 2 is mounted.

DESIGN STANDARDS

K Washrooms – Accessible Bathtubs		Level 1	Level 2	Level 3	Level 4
K99	Clear floor space in front of bathtubs is at least 750 mm wide along the entire length of the tub; AND fixtures are permitted to project into that space provided they do not restrict access to the bathtub. (K99 – K101 Note: Where a permanent seat is provided at the head end of the bathtub, the clear floor space must extend to the seat).	<input type="checkbox"/> Yes	<input type="checkbox"/> Yes	<input type="checkbox"/> Yes	<input type="checkbox"/> Yes
K100	Clear floor space in front of bathtubs is at least 750 mm wide along the entire length of the tub.		<input type="checkbox"/> Yes		
K101	Clear floor space in front of bathtubs is at least 760 mm wide along the entire length of the tub.			<input type="checkbox"/> Yes	<input type="checkbox"/> Yes
K102	Bathtubs are at least 1500 mm long.	<input type="checkbox"/> Yes	<input type="checkbox"/> Yes	<input type="checkbox"/> Yes	<input type="checkbox"/> Yes
K103	Bathtubs are open along their length, with no tracks mounted on the bathtub rim.	<input type="checkbox"/> Yes	<input type="checkbox"/> Yes	<input type="checkbox"/> Yes	<input type="checkbox"/> Yes
K104	Bathtubs feature a slip-resistant base.	<input type="checkbox"/> Yes	<input type="checkbox"/> Yes	<input type="checkbox"/> Yes	<input type="checkbox"/> Yes
K105	Bathtubs feature grab bars in conformance with Table 11.	<input type="checkbox"/> Yes	<input type="checkbox"/> Yes	<input type="checkbox"/> Yes	<input type="checkbox"/> Yes
K106	Bathtubs feature pressure-equalizing or thermostatic faucets/controls, operable using one hand without tight grasping, pinching, or twisting of the wrist.	<input type="checkbox"/> Yes	<input type="checkbox"/> Yes	<input type="checkbox"/> Yes	<input type="checkbox"/> Yes
K107	Faucets and other controls are located at the foot end of the bathtub, mounted no more than 450 mm above the rim of the tub. They are located between the centreline of the bathtub and the clear floor area adjacent to the bathtub.	<input type="checkbox"/> Yes	<input type="checkbox"/> Yes	<input type="checkbox"/> Yes	<input type="checkbox"/> Yes
K108	Bathtubs feature a hand-held shower head with at least 1800 mm of flexible hose, located so it does not obstruct the use of the grab bars, and equipped with a holder so that it can be operated as a fixed shower head.	<input type="checkbox"/> Yes	<input type="checkbox"/> Yes	<input type="checkbox"/> Yes	<input type="checkbox"/> Yes
COMPLIANCE LEVEL		<input type="checkbox"/> L1	<input type="checkbox"/> L2	<input type="checkbox"/> L3	<input type="checkbox"/> L4
K Washrooms – General Tub and Shower		Level 1	Level 2	Level 3	Level 4
K109	Stable removable shower seats are available for lateral transfers.	<input type="checkbox"/> Yes	<input type="checkbox"/> Yes	<input type="checkbox"/> Yes	<input type="checkbox"/> Yes
K110	Non-slip bath mats are available.	<input type="checkbox"/> Yes	<input type="checkbox"/> Yes	<input type="checkbox"/> Yes	<input type="checkbox"/> Yes
COMPLIANCE LEVEL		<input type="checkbox"/> L1	<input type="checkbox"/> L2	<input type="checkbox"/> L3	<input type="checkbox"/> L4

Table 11 – Grab Bars at Accessible Bathtubs

General Grab Bar Characteristics	Grab Bar 1	Grab Bar 2
<ul style="list-style-type: none"> - Slip-resistant - 30-40 mm diameter - Space between the grab bar and the adjacent surface of 35-40 mm. 	A grab bar at least 1200 mm long, located horizontally along the length of the bathtub, 180-280 mm above the rim of the tub.	A grab bar at least 1200 mm long, located vertically at the end of the bathtub, adjacent to the clear floor space, with the lower end 180-280 mm above the rim of the tub.

Information and Communication

RATIONALE

Accessible information and communication strategies are the essence of providing excellent customer service. Forms, hotel information and in-room service directories should be available in large print formats and Braille formats. The facility's emergency evacuation plan should be available in all formats, including Braille, large print format, and on diskette, clearly indicating safe exit routes from the hotel facilities. To provide full access, a TTY should be available at the front desk and staff should be trained in its use. Staff should provide facility and room orientation to anyone who requests it and should know how to provide effective information for guests with visual or cognitive disabilities.

Assistive Listening Systems

The provision of assistive listening devices is important for the range of individuals who have hearing limitations. Listening systems can be either permanent or portable. Adequate and controllable lighting is important for everyone and required for persons who lip-read, or those who require increased task lighting, due to a visual impairment. Visual provisions should be made for individuals who may not hear an audible public address system.

Video Display Terminals

Video display terminals, kiosks and banking machines can be designed to be accessible to all customers, including people with visual impairments. Alternate technology or audio interfaces are required. Seated eye-level, reach and kneespace provisions should also be considered, to ensure that a person using a wheelchair can access an information terminal.



DESIGN STANDARDS

L	Information & Communication	Level 1	Level 2	Level 3	Level 4
L1	Print materials are available in large print, 14 pt. and Braille for important legal and safety documents such as registration cards, hotel bills and fire safety plans.	<input type="checkbox"/> Yes	<input type="checkbox"/> Yes	<input type="checkbox"/> Yes	<input type="checkbox"/> Yes
L2	Print materials are available in large print, 14 pt. and Braille for information documents such as menus, services information packages/binders.		<input type="checkbox"/> Yes	<input type="checkbox"/> Yes	<input type="checkbox"/> Yes
L3	The company website includes accessibility features to enhance usability by persons with disabilities.		<input type="checkbox"/> Yes	<input type="checkbox"/> Yes	<input type="checkbox"/> Yes
L4	An Emergency Evacuation Plan that addresses people with disabilities is available for hand out.	<input type="checkbox"/> Yes	<input type="checkbox"/> Yes	<input type="checkbox"/> Yes	<input type="checkbox"/> Yes
L5	A meeting room accessibility checklist is available.		<input type="checkbox"/> Yes	<input type="checkbox"/> Yes	<input type="checkbox"/> Yes
L6	Facility and Room Orientation services are available.		<input type="checkbox"/> Yes	<input type="checkbox"/> Yes	<input type="checkbox"/> Yes
L7	A TTY is available at the front desk for guest use.		<input type="checkbox"/> Yes	<input type="checkbox"/> Yes	<input type="checkbox"/> Yes
L8	Information is available on external services and amenities.		<input type="checkbox"/> Yes	<input type="checkbox"/> Yes	<input type="checkbox"/> Yes
L9	An induction loop, infrared system, or radio frequency assistive listening system is provided in meeting and conference rooms – or a portable listening system is available. Receivers required for use with the assistive listening system include a 3.2 mm standard mono jack that can interface with telecoils in hearings aids through the provision of neck loops.		<input type="checkbox"/> Yes	<input type="checkbox"/> Yes	<input type="checkbox"/> Yes
L10	All TVs incorporate a built-in decoder for captioning.	<input type="checkbox"/> Yes	<input type="checkbox"/> Yes	<input type="checkbox"/> Yes	<input type="checkbox"/> Yes
L11	Door-knocker signaling devices are available for guests who are deaf, deafened or hard of hearing.	<input type="checkbox"/> Yes	<input type="checkbox"/> Yes	<input type="checkbox"/> Yes	<input type="checkbox"/> Yes
L12	There is a TTY number available to call the hotel and there is someone available at all times who is capable of answering a TTY call.		<input type="checkbox"/> Yes	<input type="checkbox"/> Yes	<input type="checkbox"/> Yes
L13	There is a tape player/ cassette or other alternate format available with the service information.		<input type="checkbox"/> Yes	<input type="checkbox"/> Yes	<input type="checkbox"/> Yes
COMPLIANCE LEVEL		<input type="checkbox"/> L1	<input type="checkbox"/> L2	<input type="checkbox"/> L3	<input type="checkbox"/> L4

Signage

RATIONALE

Signage should be simple and incorporate plain language. The use of graphic symbols is helpful for individuals such as children with limited literacy or individuals speaking a different language. A sans serif font and sharp contrasts in colour

make signage easier for everyone to read, particularly those with a visual impairment. The meaning of the symbol must be clear and simple to understand. To enhance readability, raised tactile lettering should incorporate edges that are slightly smoothed.

Wayfinding signage should be provided at all decision-making points. Room signage should be located on the latch side of doors, at a consistent height and be well illuminated.

DESIGN STANDARDS

M	Signage - General	Level 1	Level 2	Level 3	Level 4
M1	Signs used to provide the same type of information within the same facility, are consistently shaped, strongly coloured, and appropriately positioned.	_ Yes	_ Yes	_ Yes	_ Yes
M2	Signs, letters, numerals and pictograms are strongly colour contrasted with their background.	_ Yes	_ Yes	_ Yes	_ Yes
M3	Signs are positioned to avoid shadow areas and glare.	_ Yes	_ Yes	_ Yes	_ Yes
M4	Signs that depend on incident lighting are illuminated to a level of at least 200 lux.	_ Yes	_ Yes	_ Yes	_ Yes
M5	Letters and numerals on signs feature a sans serif font face.	_ Yes	_ Yes	_ Yes	_ Yes
M6	Arabic numbers are used for numeric information on signs.	_ Yes	_ Yes	_ Yes	_ Yes
M7	Accessible facilities are identified by the international symbol of access.	_ Yes	_ Yes	_ Yes	_ Yes
M8	Tactile and Braille characters supplement the text of regulatory signs, warning signs and identification signs. (Refer also to M14-M17.)	_ Yes	_ Yes	_ Yes	_ Yes
M9	Pictograms are at least 150 mm high. OR Signs do not incorporate pictograms.	_ Yes	_ Yes	_ Yes	_ Yes
M10	Pictograms are accompanied by the equivalent text description in Braille, placed directly below the pictogram. OR Signs do not incorporate pictograms.	_ Yes	_ Yes	_ Yes	_ Yes
M11	Doors with closers that are not equipped with hold-open devices (such as magnetic holds), shall have signs located on the push side of the doors.	_ Yes	_ Yes		
M12	Signs incorporate visual characters that use a Title Case, a mix of upper and lower-case lettering (i.e. NOT all capital letters).	_ Yes	_ Yes	_ Yes	_ Yes
M13	The Access Canada logo sign is visible at the entrance.	_ Yes	_ Yes	_ Yes	_ Yes
COMPLIANCE LEVEL		_ L1	_ L2	_ L3	_ L4

DESIGN STANDARDS

M	Signage – Tactile Signs	Level 1	Level 2	Level 3	Level 4
M14	Tactile characters shall have a vertical 16-50 mm height.	<input type="checkbox"/> Yes	<input type="checkbox"/> Yes	<input type="checkbox"/> Yes	<input type="checkbox"/> Yes
M15	Tactile signs are located with their centreline 1500 +/- 25 mm above the floor.	<input type="checkbox"/> Yes	<input type="checkbox"/> Yes	<input type="checkbox"/> Yes	<input type="checkbox"/> Yes
M16	Tactile signs allow a person to approach within 100 mm of the sign without encountering protruding objects or standing within the area of a door swing.	<input type="checkbox"/> Yes	<input type="checkbox"/> Yes	<input type="checkbox"/> Yes	<input type="checkbox"/> Yes
M17	Tactile room identification signs are located on the latch side of doors, with their leading vertical edge 150 +/- 10 mm from the door jamb. OR Where there is no wall space adjacent to the latch side of doors, signs are located on the nearest adjacent wall.	<input type="checkbox"/> Yes	<input type="checkbox"/> Yes	<input type="checkbox"/> Yes	<input type="checkbox"/> Yes
COMPLIANCE LEVEL		<input type="checkbox"/> L1	<input type="checkbox"/> L2	<input type="checkbox"/> L3	<input type="checkbox"/> L4

Additional signage requirements are incorporated into sections related to specific accessible elements such as entrances, washrooms, etc.

Emergency Planning

RATIONALE

An emergency plan addressing communication and evacuation should be developed and information about the plan be made available at the front desk. The plan should include recommendations and procedures for people with disabilities.

Doors along emergency egress routes must include the same accessibility features as other doors specified in Section D. The doors and routes must also be marked in a way that is accessible to all individuals, including people who may have limited skills with literacy, such as children or persons speaking a different language. People with a visual impairment will need a means of quickly locating exits – tactile and well colour-contrasted signs will assist.

In the event of a fire, when elevators should not be used and an accessible exit is not available, areas of refuge (fire safe holding areas) should be utilized for a temporary holding area until evacuation or the area is declared safe. Such areas of refuge should be large enough to accommodate at least two large wheelchairs or scooters, and they must connect directly to an exit stair or protected vestibule at a firefighters' elevator. A two-way communication system should also be provided in areas of refuge to allow the emergency personnel to communicate with people using the refuge area. If no areas of refuge are available, provision should be made for the safe evacuation of people with disabilities from all areas, including areas of refuge.

Visual Alarms

Visual alarms are essential for deaf, deafened and hard of hearing individuals who may not hear audible alarms. At a minimum, visual alarm appliances should be provided in designated guest rooms and in public washrooms. If single-station audible alarms are provided, then single station visual alarms should also be provided. To achieve Level 4 access, visual alarms should be provided throughout the facility. Visual alarm signal appliances should be integrated into the facility alarm system.

DESIGN STANDARDS

N	Fire Safety – General	Level 1	Level 2	Level 3	Level 4
N1	Visual alarms (lights that flash in conjunction with the audible emergency alarms) are provided throughout the primary circulation spaces.		<input type="checkbox"/> Yes	<input type="checkbox"/> Yes	<input type="checkbox"/> Yes
N2	Visual alarms are provided within all suites and bedrooms. (Refer also to Section J, (J21-22) for requirements for visual alarms in accessible suites and bedrooms).				<input type="checkbox"/> Yes
N3	Visual alarms are provided within the meeting rooms.		<input type="checkbox"/> Yes	<input type="checkbox"/> Yes	<input type="checkbox"/> Yes
N4	Visual alarms are provided within the public washrooms.		<input type="checkbox"/> Yes	<input type="checkbox"/> Yes	<input type="checkbox"/> Yes
N5	Visual alarms are provided within the recreation areas.		<input type="checkbox"/> Yes	<input type="checkbox"/> Yes	<input type="checkbox"/> Yes
N6	Where visual alarms are provided, they shall have a flash rate within the frequency range of 1 - 3 Hz and be synchronized to flash in unison.	<input type="checkbox"/> Yes	<input type="checkbox"/> Yes	<input type="checkbox"/> Yes	<input type="checkbox"/> Yes
N7	All exits are clearly visible.	<input type="checkbox"/> Yes	<input type="checkbox"/> Yes	<input type="checkbox"/> Yes	<input type="checkbox"/> Yes
N8	The width of exit corridors is not less than 1200 mm.	<input type="checkbox"/> Yes	<input type="checkbox"/> Yes	<input type="checkbox"/> Yes	<input type="checkbox"/> Yes
N9	Access routes and passages leading to exits are clearly marked to guide guests.	<input type="checkbox"/> Yes	<input type="checkbox"/> Yes	<input type="checkbox"/> Yes	<input type="checkbox"/> Yes
N10	Exits are easily discernable and accessible from the areas they serve.	<input type="checkbox"/> Yes	<input type="checkbox"/> Yes	<input type="checkbox"/> Yes	<input type="checkbox"/> Yes
N11	Exits are illuminated in darkness.	<input type="checkbox"/> Yes	<input type="checkbox"/> Yes	<input type="checkbox"/> Yes	<input type="checkbox"/> Yes
N12	Hotel and lodging facilities are configured with direct exits to the exterior and/or common circulation areas, so that occupants always have two means of exiting.	<input type="checkbox"/> Yes	<input type="checkbox"/> Yes	<input type="checkbox"/> Yes	<input type="checkbox"/> Yes
N13	Exits are located so they provide continuous means of escape to the exterior or to designated areas of refuge.	<input type="checkbox"/> Yes	<input type="checkbox"/> Yes	<input type="checkbox"/> Yes	<input type="checkbox"/> Yes
N14	Staircases and corridors are equipped with emergency lighting.	<input type="checkbox"/> Yes	<input type="checkbox"/> Yes	<input type="checkbox"/> Yes	<input type="checkbox"/> Yes
N15	Characters on internal exit signs are at least 114 mm high.		<input type="checkbox"/> Yes	<input type="checkbox"/> Yes	<input type="checkbox"/> Yes
N16	Characters on external exit signs are at least 150 mm high.		<input type="checkbox"/> Yes	<input type="checkbox"/> Yes	<input type="checkbox"/> Yes
N17	Emergency evacuation plans are available in alternate formats, including large print.		<input type="checkbox"/> Yes	<input type="checkbox"/> Yes	<input type="checkbox"/> Yes
N18	Procedures are in place to allow guests who need additional assistance in the event of emergency to self identify their needs upon check in.	<input type="checkbox"/> Yes	<input type="checkbox"/> Yes	<input type="checkbox"/> Yes	<input type="checkbox"/> Yes
N19	There is an established evacuation plan for people with disabilities who require additional assistance.	<input type="checkbox"/> Yes	<input type="checkbox"/> Yes	<input type="checkbox"/> Yes	<input type="checkbox"/> Yes
COMPLIANCE LEVEL		<input type="checkbox"/> L1	<input type="checkbox"/> L2	<input type="checkbox"/> L3	<input type="checkbox"/> L4

DESIGN STANDARDS

N	Fire Safety – Areas of Refuge	Level 1	Level 2	Level 3	Level 4
N20	Areas of refuge are identified with signage.	<input type="checkbox"/> Yes	<input type="checkbox"/> Yes	<input type="checkbox"/> Yes	<input type="checkbox"/> Yes
N21	Areas of refuge are separated from the building floor area by a fire separation having a fire-resistance rating at least equal to that required for an exit.	<input type="checkbox"/> Yes	<input type="checkbox"/> Yes	<input type="checkbox"/> Yes	<input type="checkbox"/> Yes
N22	Areas of refuge are served by an exit or firefighter's elevator.	<input type="checkbox"/> Yes	<input type="checkbox"/> Yes	<input type="checkbox"/> Yes	<input type="checkbox"/> Yes
N23	Areas of refuge accommodate at least two spaces for wheelchairs at least 850 x 1200 mm.	<input type="checkbox"/> Yes	<input type="checkbox"/> Yes	<input type="checkbox"/> Yes	<input type="checkbox"/> Yes
N24	Areas of refuge are smoke protected. OR The building is three storeys or less in height.	<input type="checkbox"/> Yes	<input type="checkbox"/> Yes	<input type="checkbox"/> Yes	<input type="checkbox"/> Yes
N25	Areas of refuge are equipped with a telephone or communication system connected to an emergency response system.	<input type="checkbox"/> Yes	<input type="checkbox"/> Yes	<input type="checkbox"/> Yes	<input type="checkbox"/> Yes
N26	Areas of refuge have their locations identified by directional signs.	<input type="checkbox"/> Yes	<input type="checkbox"/> Yes	<input type="checkbox"/> Yes	<input type="checkbox"/> Yes
N27	Areas of refuge are identified on all publicly displayed floor evacuation plans.	<input type="checkbox"/> Yes	<input type="checkbox"/> Yes	<input type="checkbox"/> Yes	<input type="checkbox"/> Yes
N28	Areas of refuge are identified on floor evacuation plans that are available in alternate formats.	<input type="checkbox"/> Yes	<input type="checkbox"/> Yes	<input type="checkbox"/> Yes	<input type="checkbox"/> Yes
N29	Areas of refuge are designated in evacuation procedure documents.	<input type="checkbox"/> Yes	<input type="checkbox"/> Yes	<input type="checkbox"/> Yes	<input type="checkbox"/> Yes
COMPLIANCE LEVEL		<input type="checkbox"/> L1	<input type="checkbox"/> L2	<input type="checkbox"/> L3	<input type="checkbox"/> L4

Miscellaneous

DESIGN STANDARDS

Controls and Operating Mechanisms

Operating mechanisms should be within reach of children and individuals in wheelchairs, and mechanisms that require a high degree of dexterity or strength will be difficult for many people to use. Controls that require two hands to operate can also be difficult for some people,

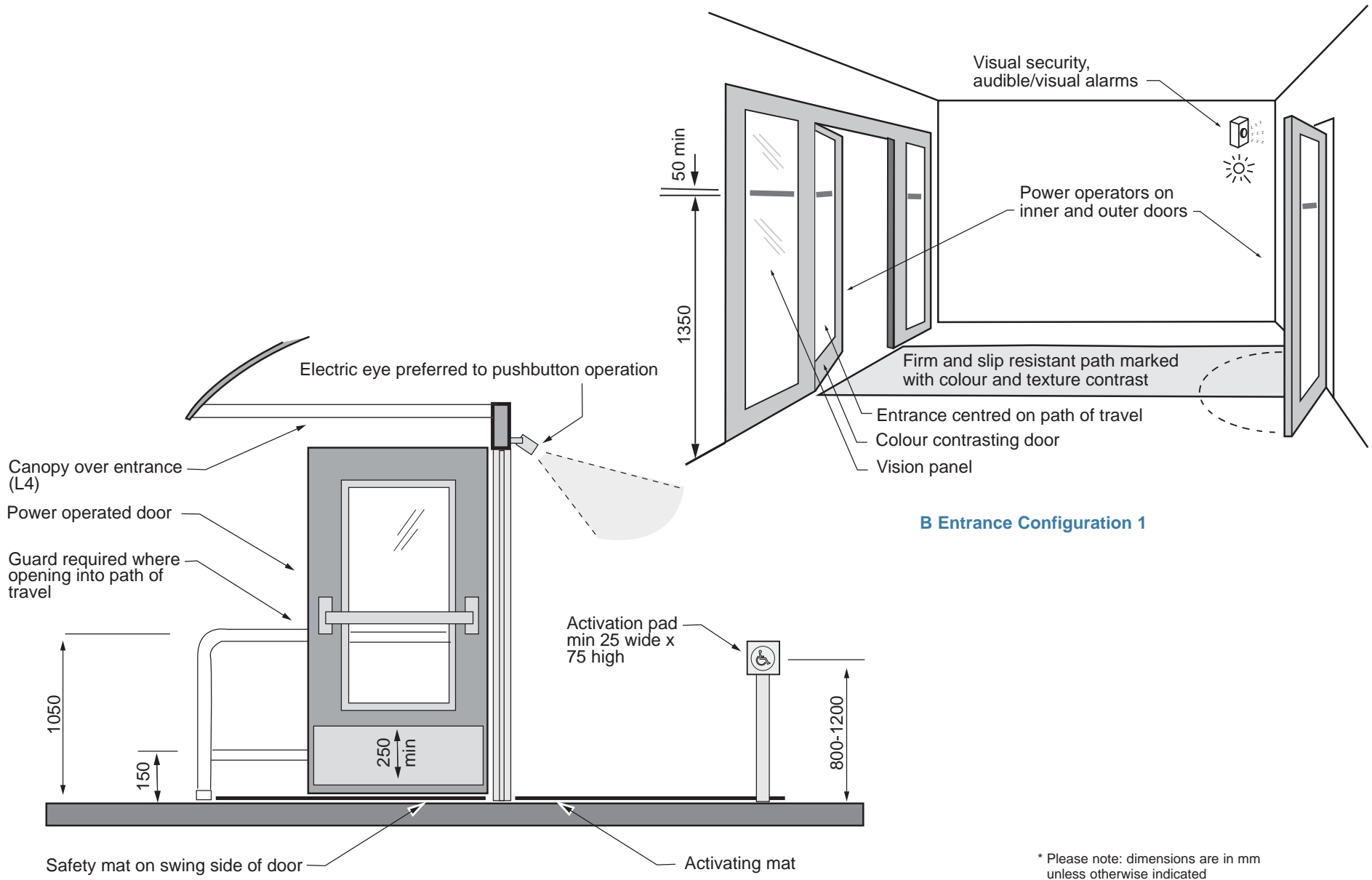
particularly those with reach or balance limitations, and those who must use their hands to hold canes or crutches. Adequate lighting levels and colour contrast improve visibility for everyone – but particularly people with reduced vision. Individuals with a visual impairment may also have difficulty identifying and using flush-mounted buttons, touch screens or controls without tactile lettering or Braille.

Vending Machines

Vending machines need to have adequate space in front to allow for people with mobility aids to access and use the machine. Seating areas and tables adjacent to vending machines offer convenience and should accommodate the spatial requirements of wheelchairs.

O	Vending Machines	Level 1	Level 2	Level 3	Level 4
01	The vending machine operating controls are located above the floor between 400 – 1200 mm.	<input type="checkbox"/> Yes	<input type="checkbox"/> Yes	<input type="checkbox"/> Yes	<input type="checkbox"/> Yes
02	At the controls and operating mechanisms of dispensing machines, the clear level floor space in front of the control/mechanism is at least 750 x 1200 mm.	<input type="checkbox"/> Yes	<input type="checkbox"/> Yes		
03	At the controls and operating mechanisms of dispensing machines, the clear level floor space in front of the control/mechanism is at least 760 x 1370 mm.			<input type="checkbox"/> Yes	<input type="checkbox"/> Yes
04	Controls and operating mechanisms are operable using one hand without tight grasping, pinching or twisting of the wrist.	<input type="checkbox"/> Yes	<input type="checkbox"/> Yes	<input type="checkbox"/> Yes	<input type="checkbox"/> Yes
05	Controls and operating mechanisms are illuminated to at least 100 lux.	<input type="checkbox"/> Yes	<input type="checkbox"/> Yes	<input type="checkbox"/> Yes	<input type="checkbox"/> Yes
06	Where reading is necessary, controls and operating mechanisms are illuminated to at least 200 lx. OR Reading is not necessary to use controls or operating mechanisms.	<input type="checkbox"/> Yes	<input type="checkbox"/> Yes	<input type="checkbox"/> Yes	<input type="checkbox"/> Yes
07	Controls and operating mechanisms are colour contrasted with their background.	<input type="checkbox"/> Yes	<input type="checkbox"/> Yes	<input type="checkbox"/> Yes	<input type="checkbox"/> Yes
08	Control settings shall provide tactile and/or auditory information indicating the function and position of controls. OR Controls do not feature settings (i.e. on/off only).	<input type="checkbox"/> Yes	<input type="checkbox"/> Yes	<input type="checkbox"/> Yes	<input type="checkbox"/> Yes
09	Information on visual displays on controls and operating mechanisms are supplemented by tactile and/or auditory information, incorporate colour contrast and are glare free. OR There are no controls incorporating information on visual displays.	<input type="checkbox"/> Yes	<input type="checkbox"/> Yes	<input type="checkbox"/> Yes	<input type="checkbox"/> Yes
	COMPLIANCE LEVEL	<input type="checkbox"/> L1	<input type="checkbox"/> L2	<input type="checkbox"/> L3	<input type="checkbox"/> L4

Appendix 1 - Entrancesways

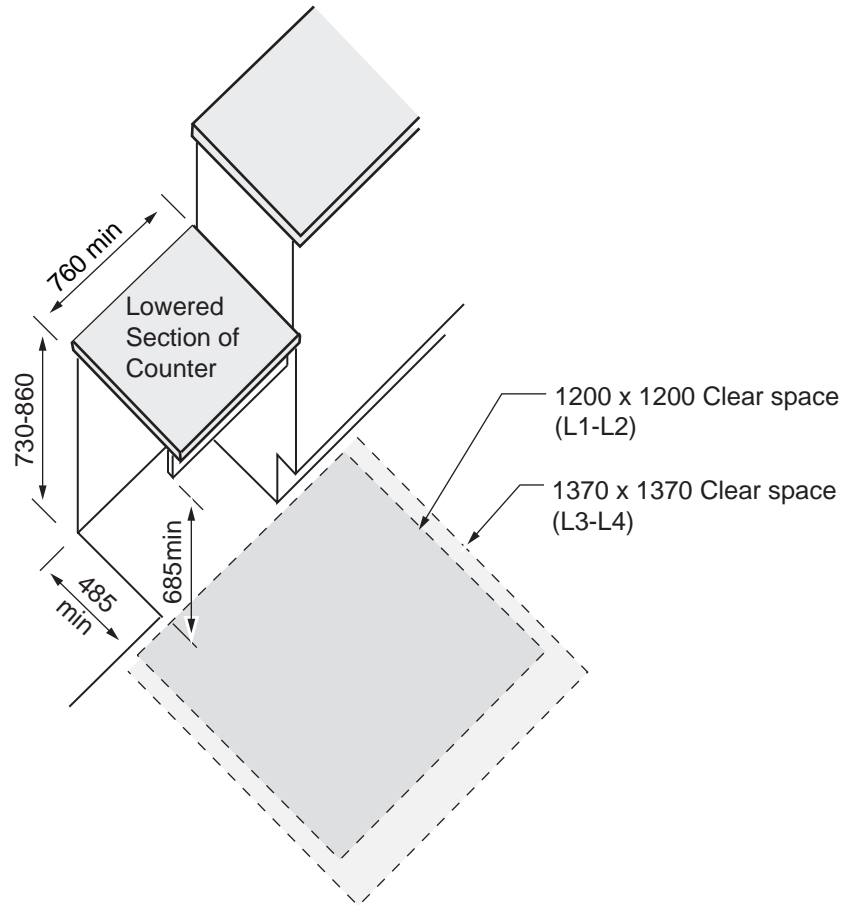


B Entrance Configuration 2

B Entrance Configuration 1

* Please note: dimensions are in mm unless otherwise indicated

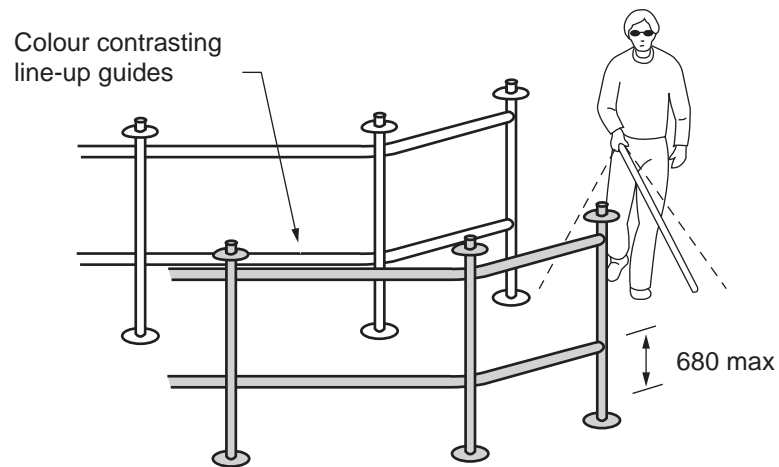
Appendix 2 - Reception Counters



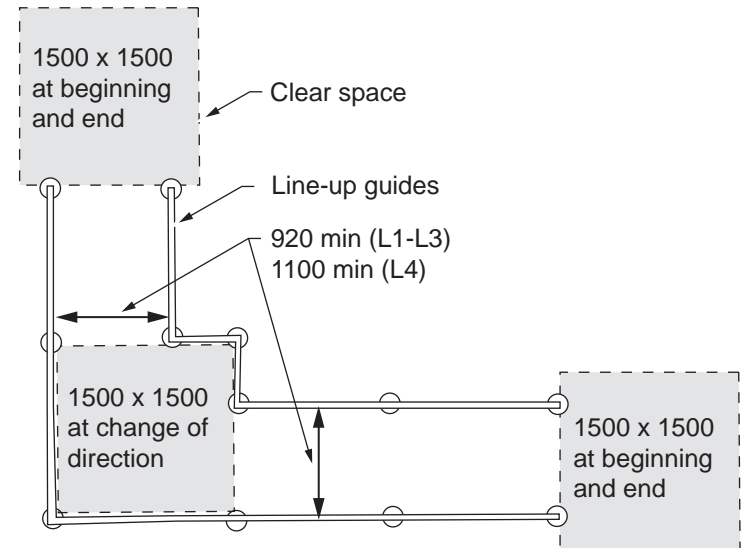
B Reception Counter

* Please note: dimensions are in mm unless otherwise indicated

Appendix 3 - Line-up Guides



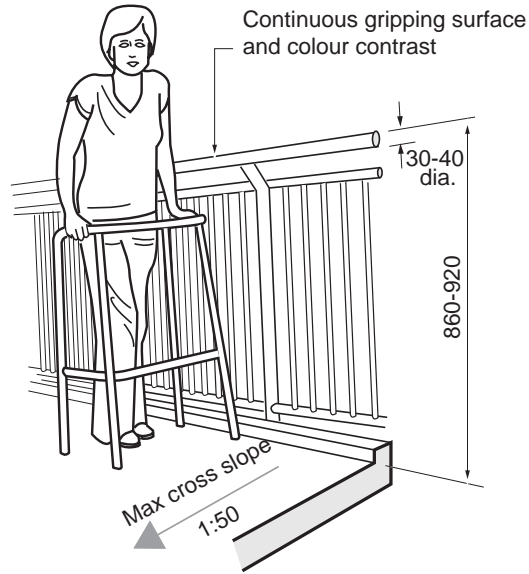
B20-27 Lineup Guides 1



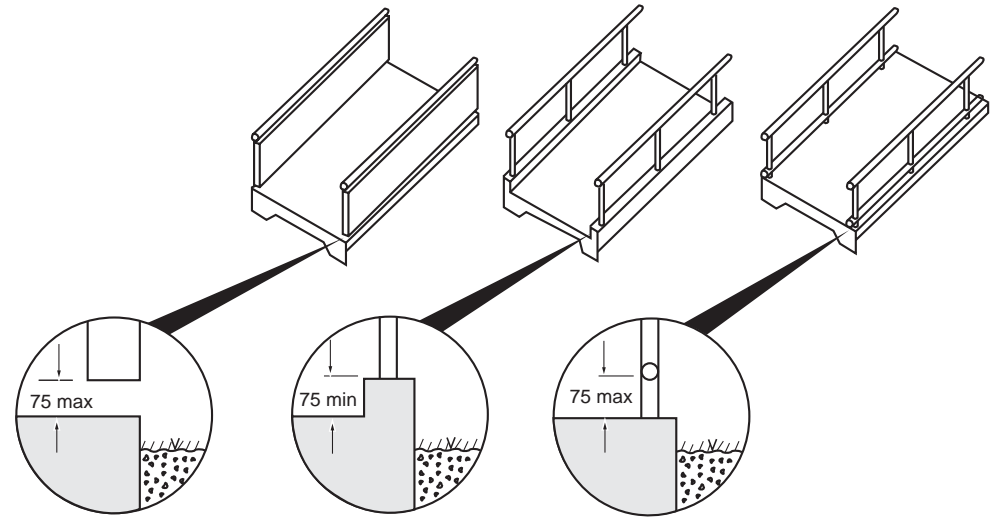
B20-27 Lineup Guides 2

* Please note: dimensions are in mm unless otherwise indicated

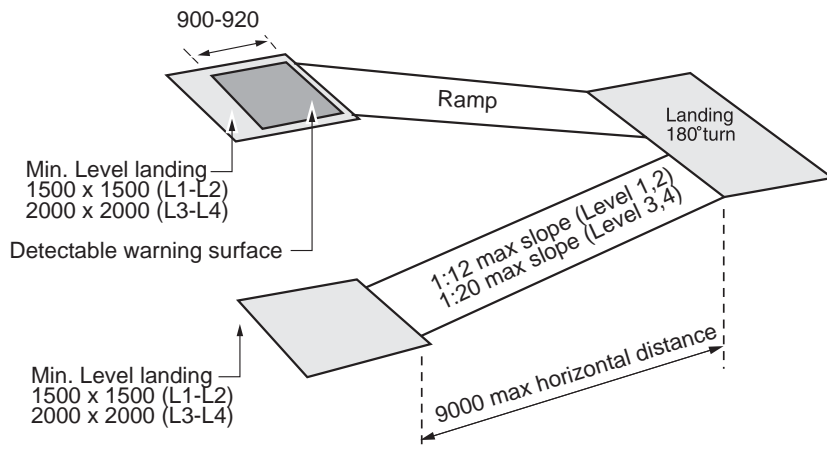
Appendix 4 - Ramps



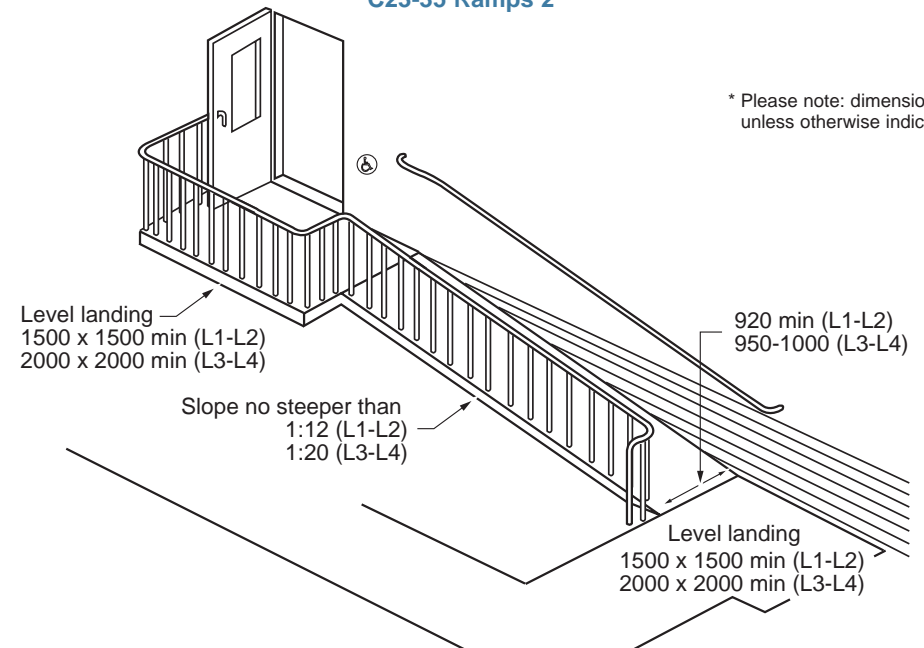
C23-35 Ramps 1



C23-35 Ramps 2



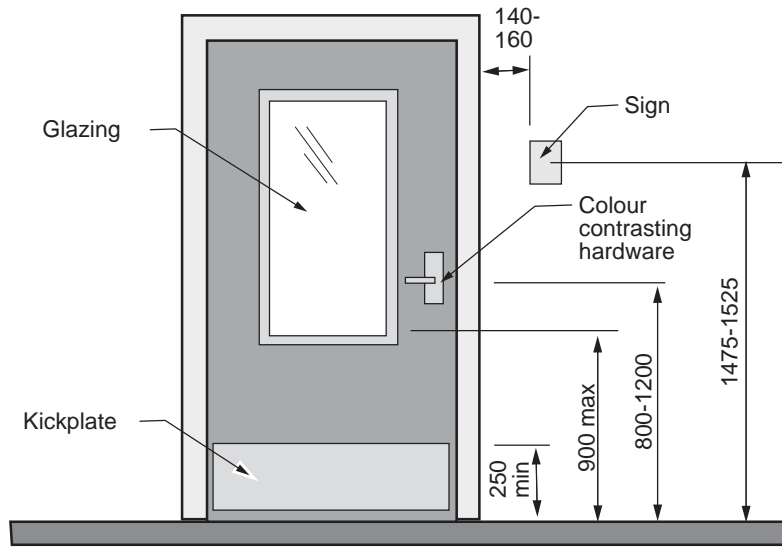
C23-35 Ramps 3



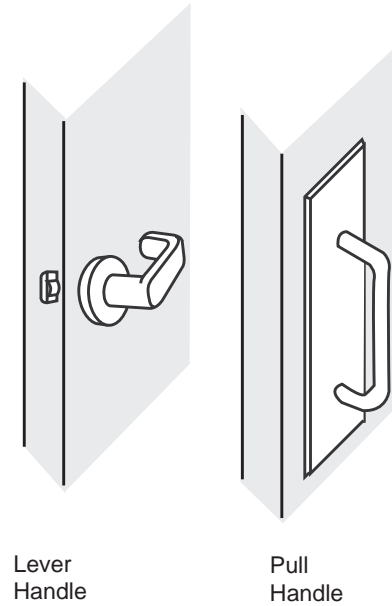
C23-35 Ramps 4

* Please note: dimensions are in mm unless otherwise indicated

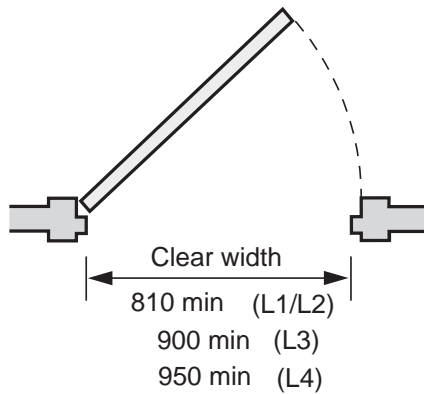
Appendix 5.1 - Doorways



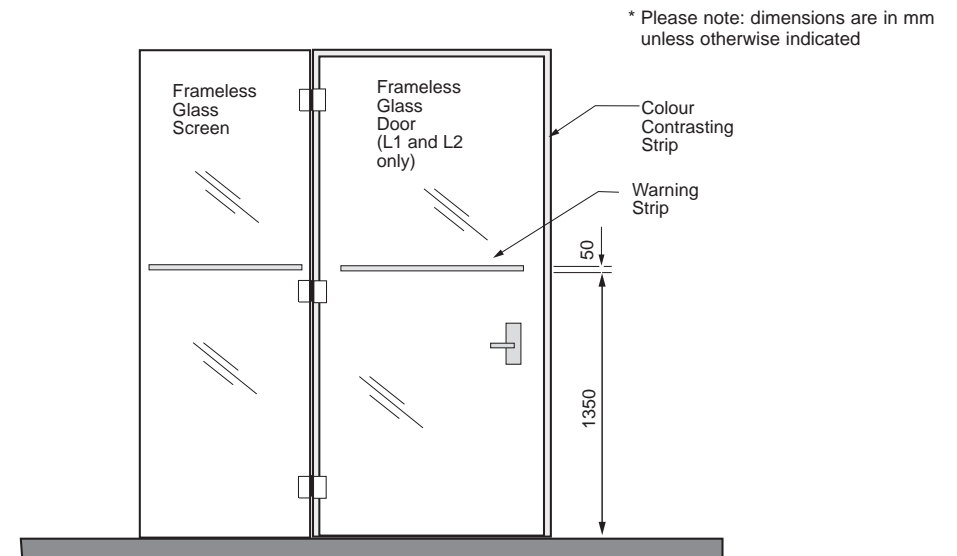
D18-19 Door Configuration



D5 Door Hardware



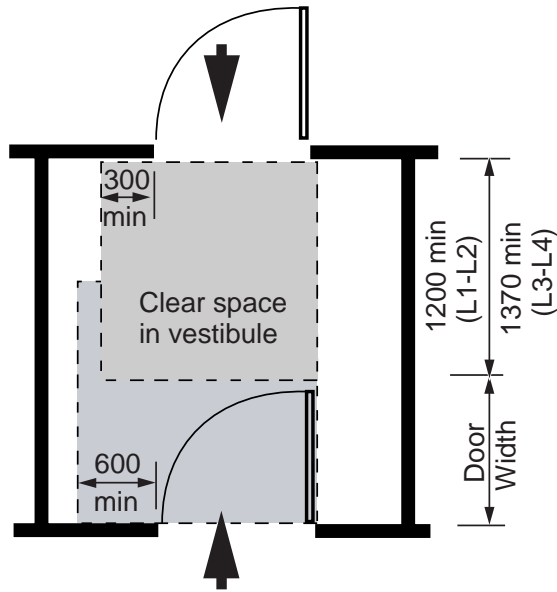
D1 Door Width



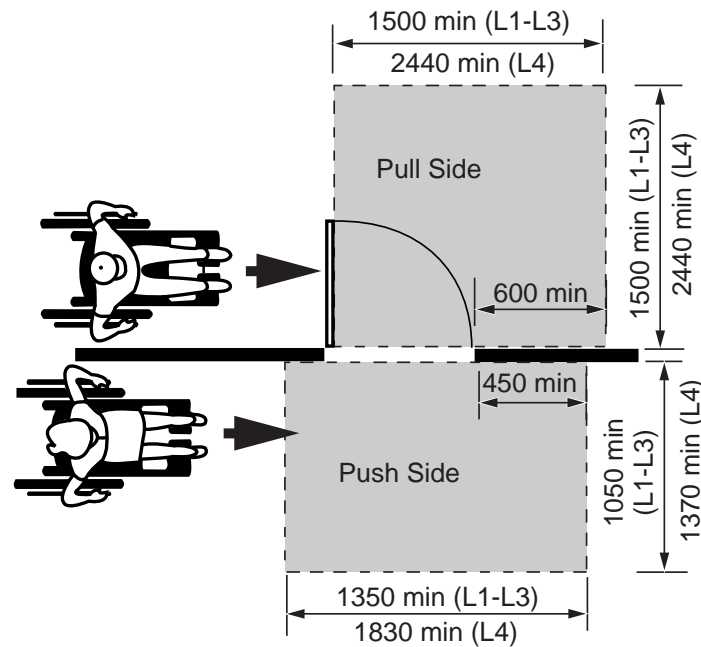
* Please note: dimensions are in mm unless otherwise indicated

D21 Frameless Glass Door

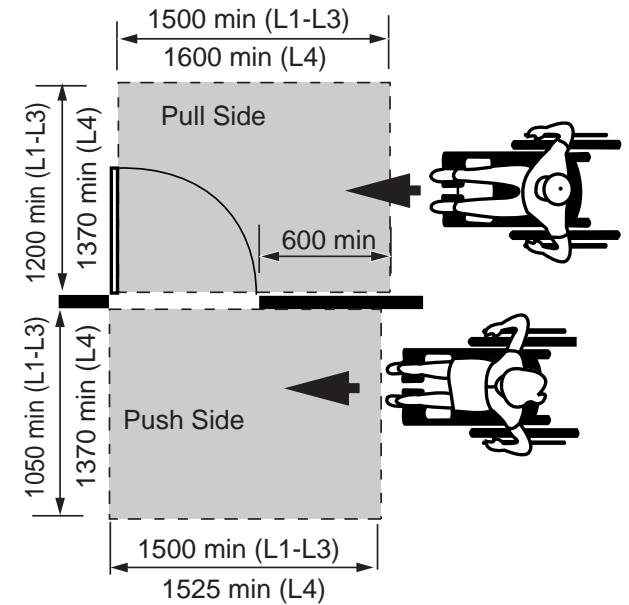
Appendix 5.2 - Doorways and Vestibules



D10-11 Vestibule



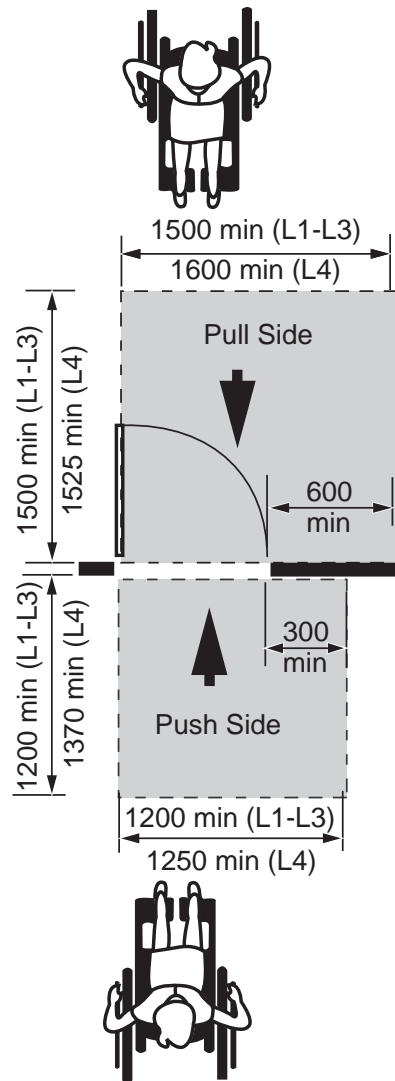
D14-15 Manoeuvring Space at Doors 1



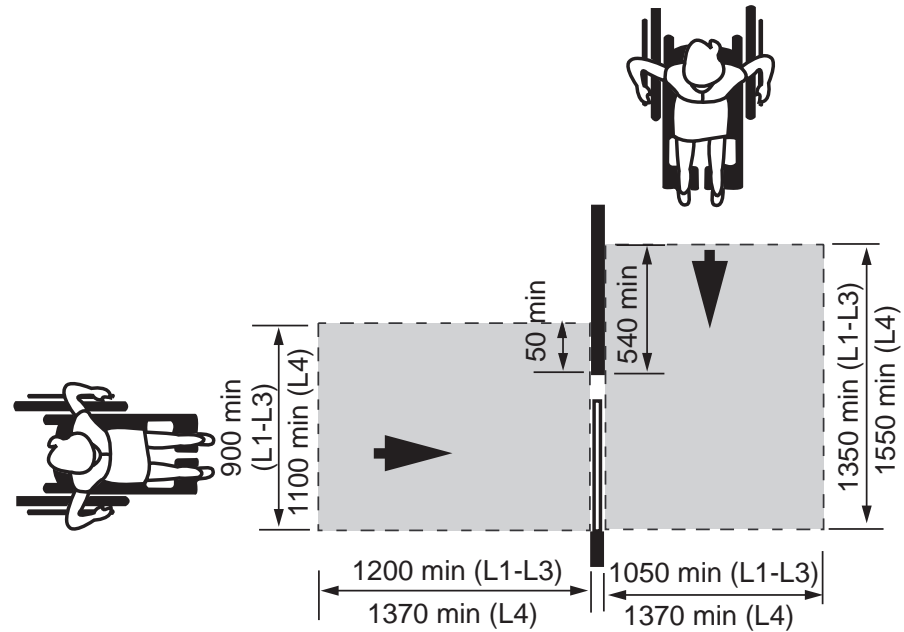
D14-15 Manoeuvring Space at Doors 2

* Please note: dimensions are in mm unless otherwise indicated

Appendix 5.2 - Doorways and Vestibules



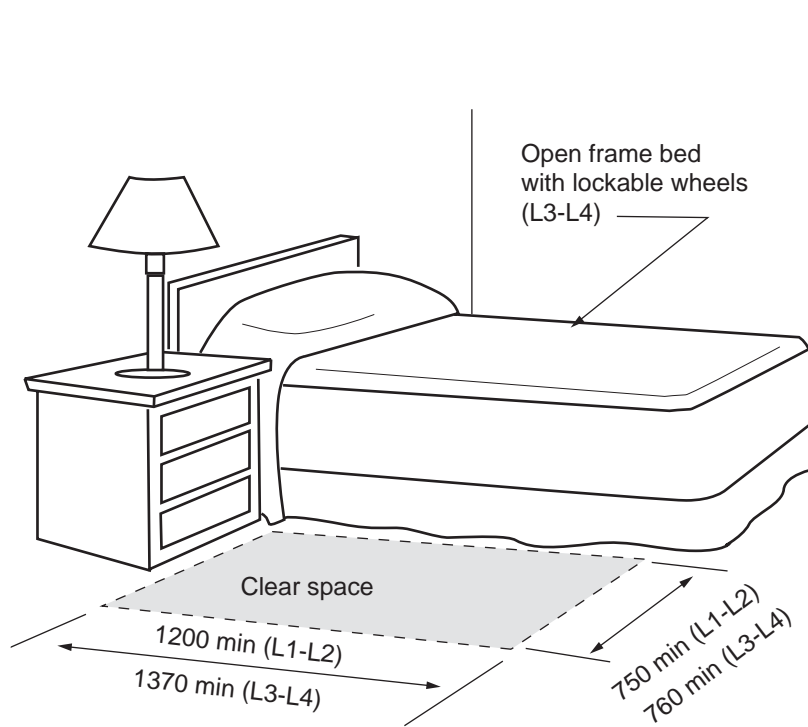
D14-15 Manoeuvring Space at Doors 3



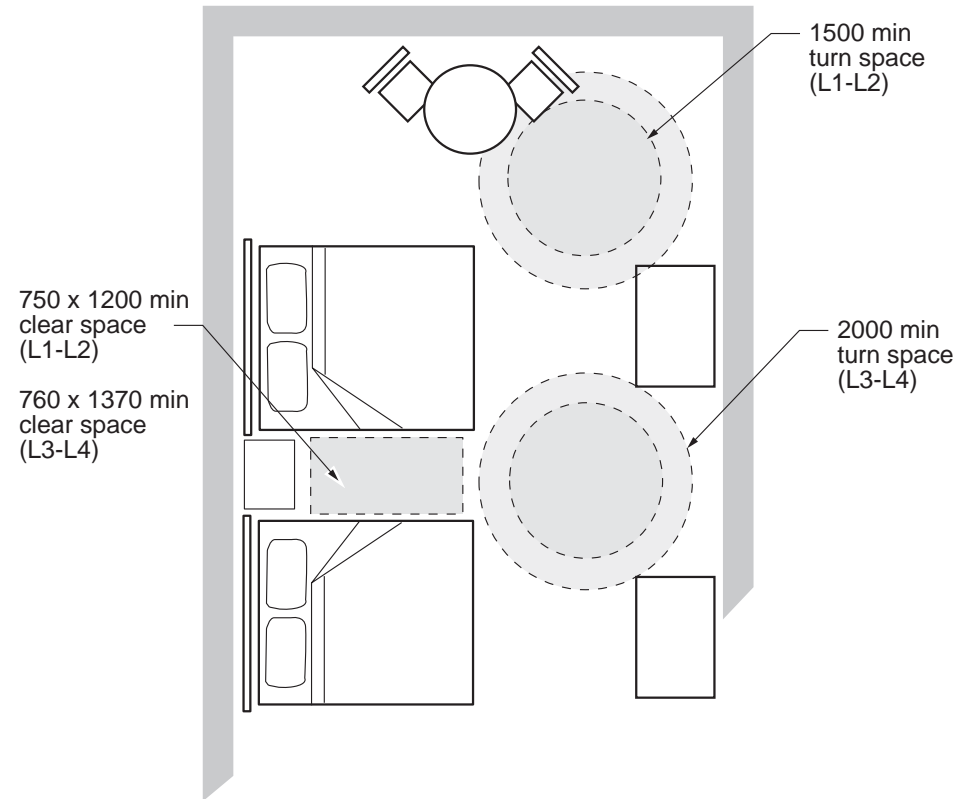
D14-15 Manoeuvring Space at Doors 4

* Please note: dimensions are in mm unless otherwise indicated

Appendix 6.1 - Guestrooms, turning space and configuration



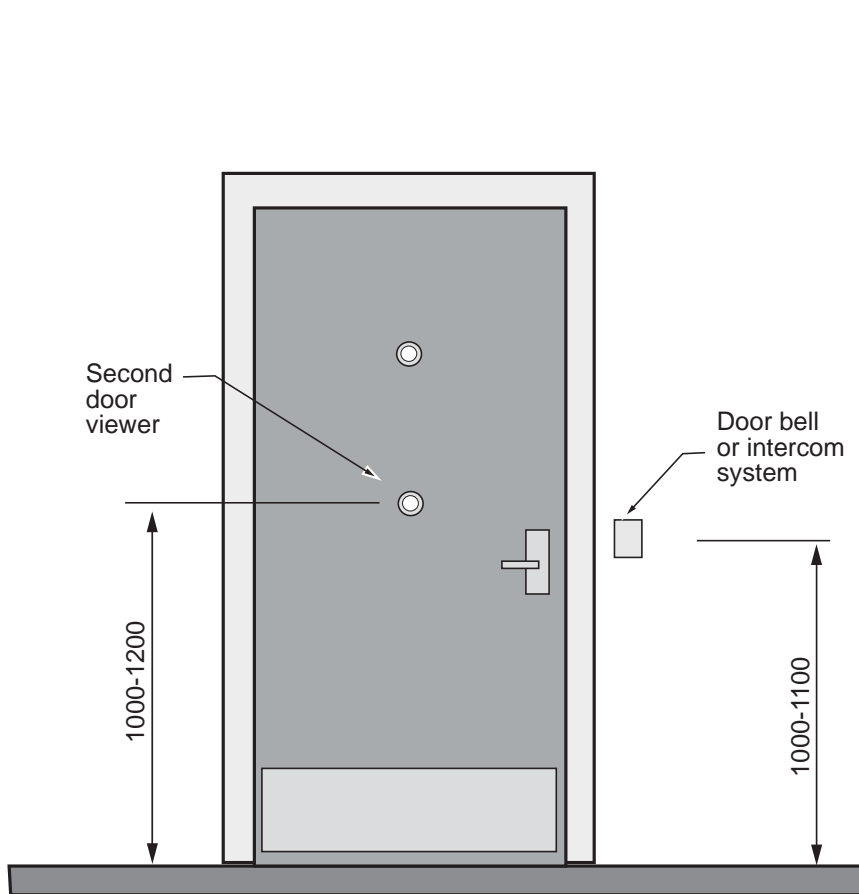
J16 Bed Configuration



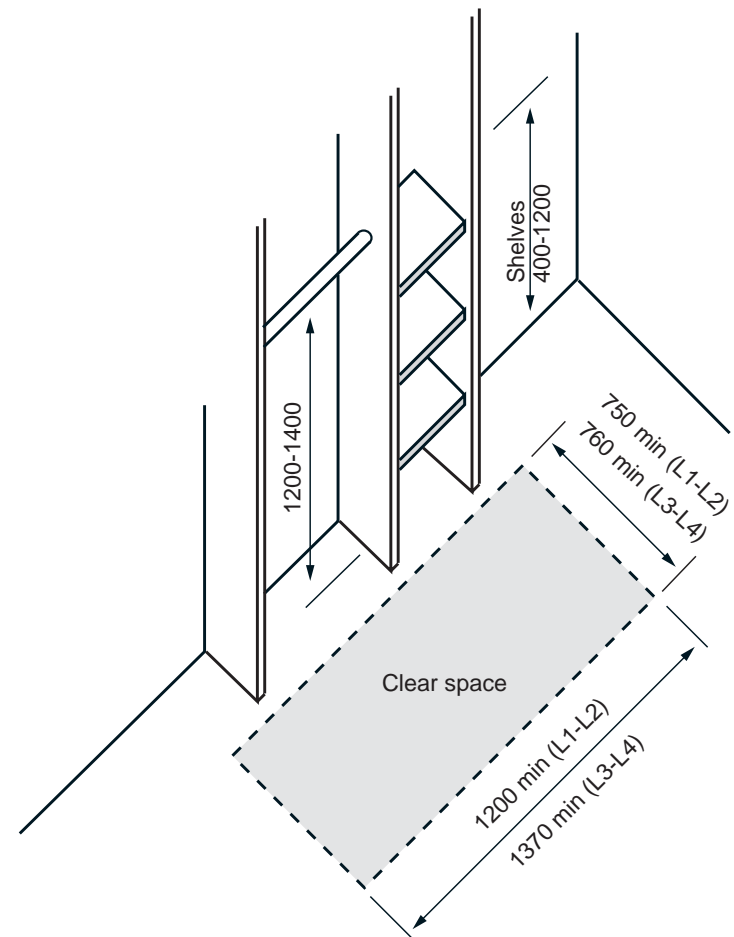
J Turning Space

* Please note: dimensions are in mm unless otherwise indicated

Appendix 6.2 - Guestrooms, entrance door and storage



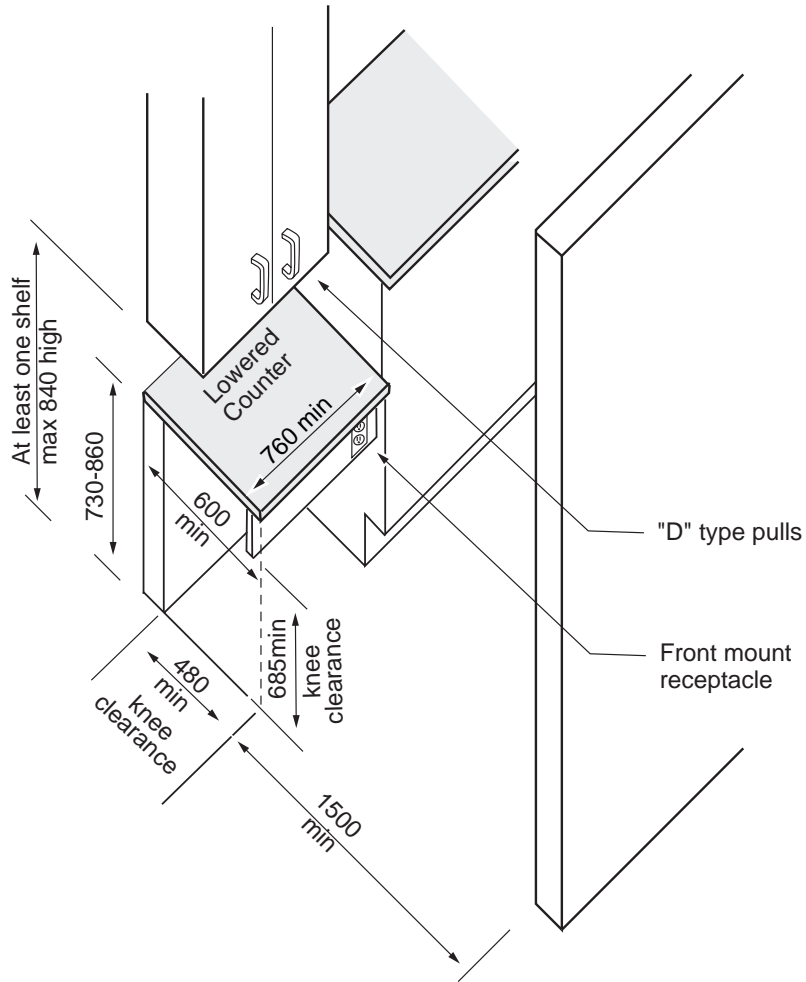
J4-5 Door to Guestroom



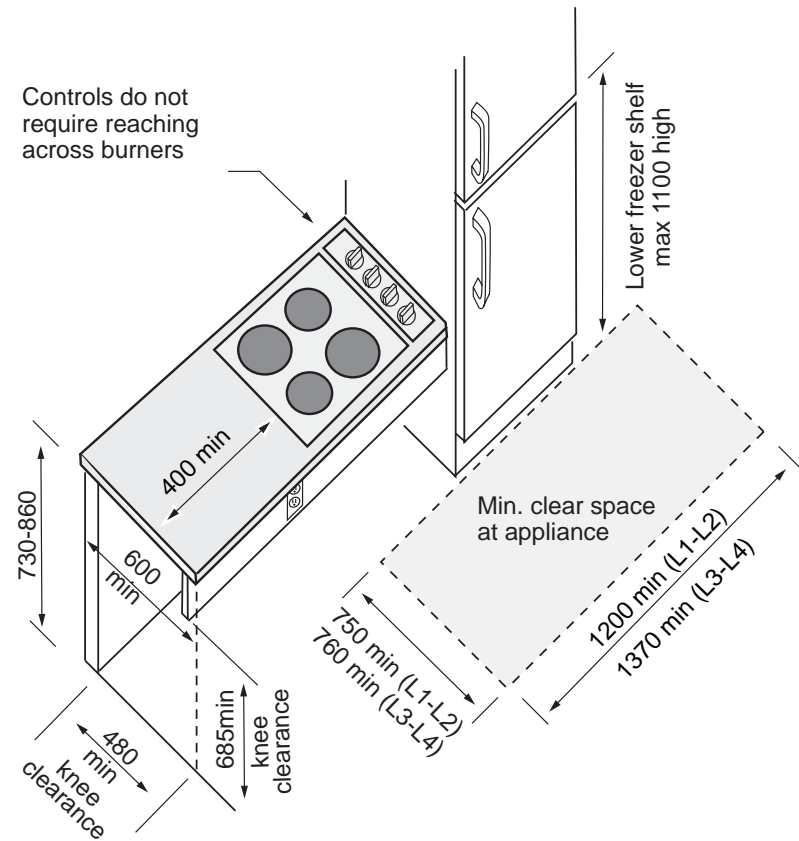
J26 Guestroom Storage

* Please note: dimensions are in mm unless otherwise indicated

Appendix 6.3 - Guestrooms, kitchenettes



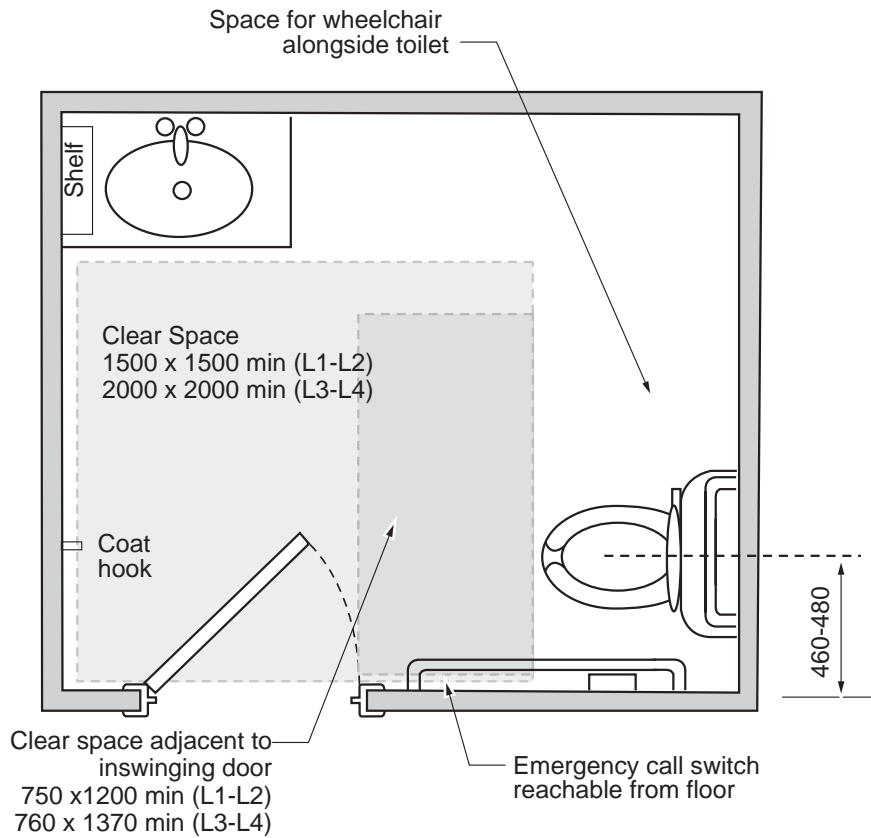
J kitchenette 1



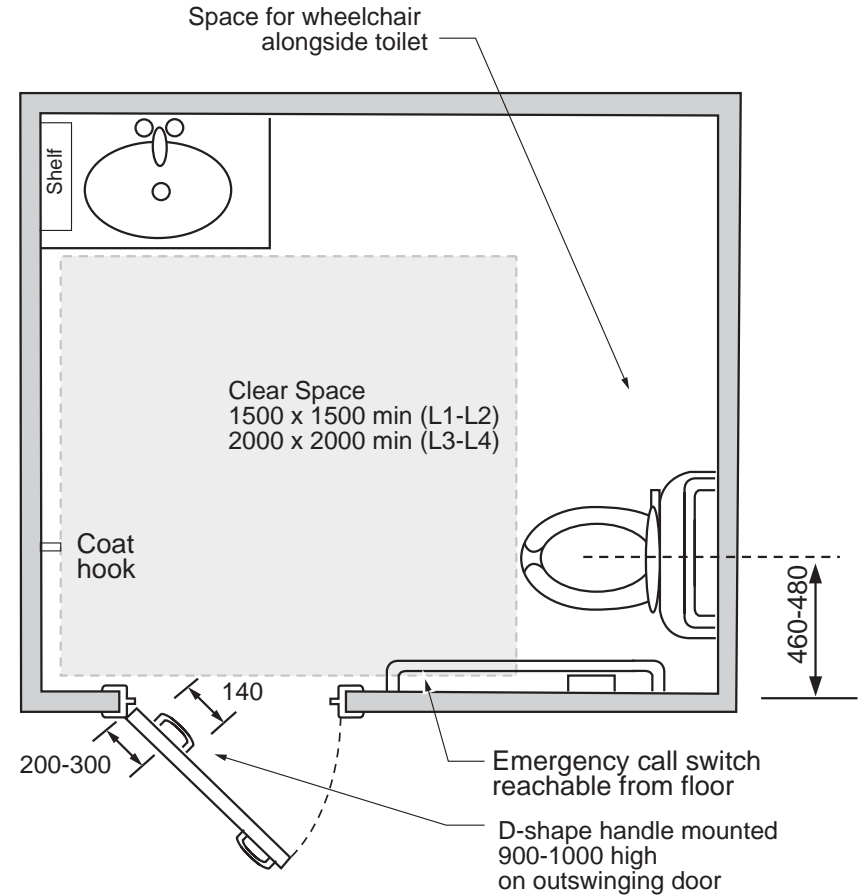
J kitchenette 2

* Please note: dimensions are in mm unless otherwise indicated

Appendix 7.1 - Washrooms, configurations 1



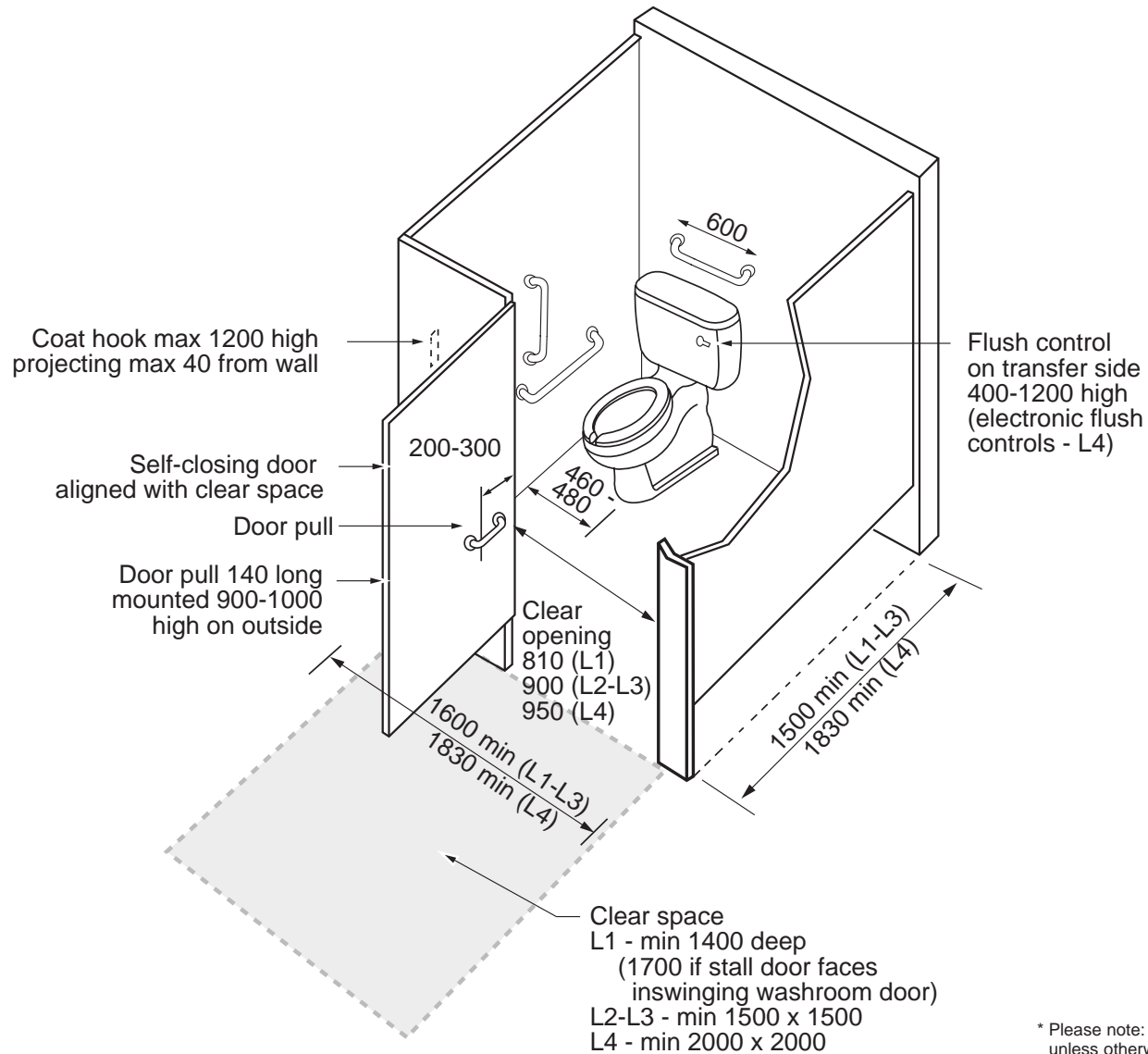
K Individual Washroom Inswing



K Individual Washroom Outswing

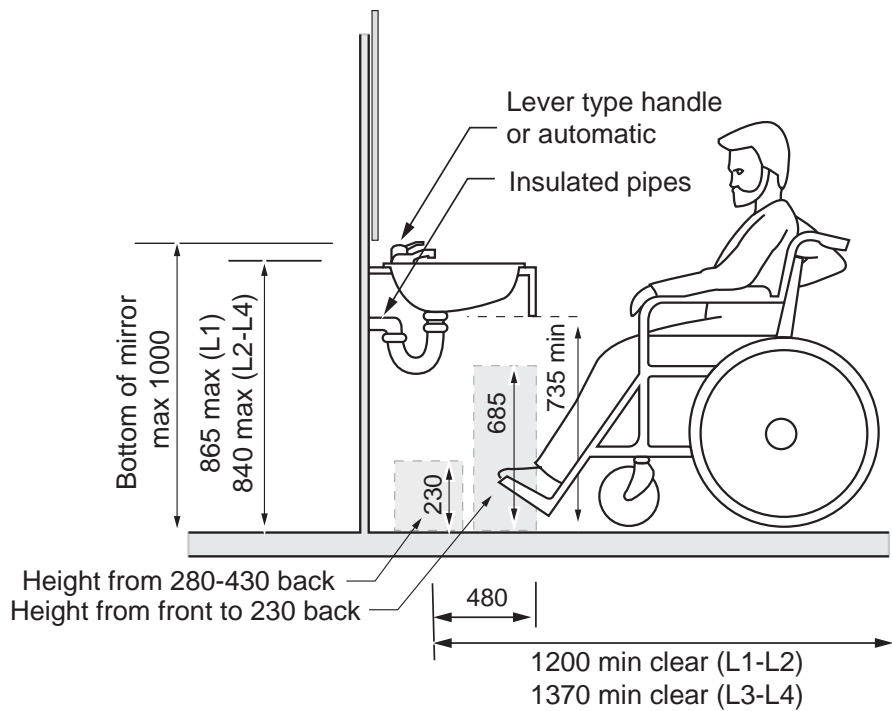
* Please note: dimensions are in mm unless otherwise indicated

Appendix 7.1 - Washrooms, configurations 2

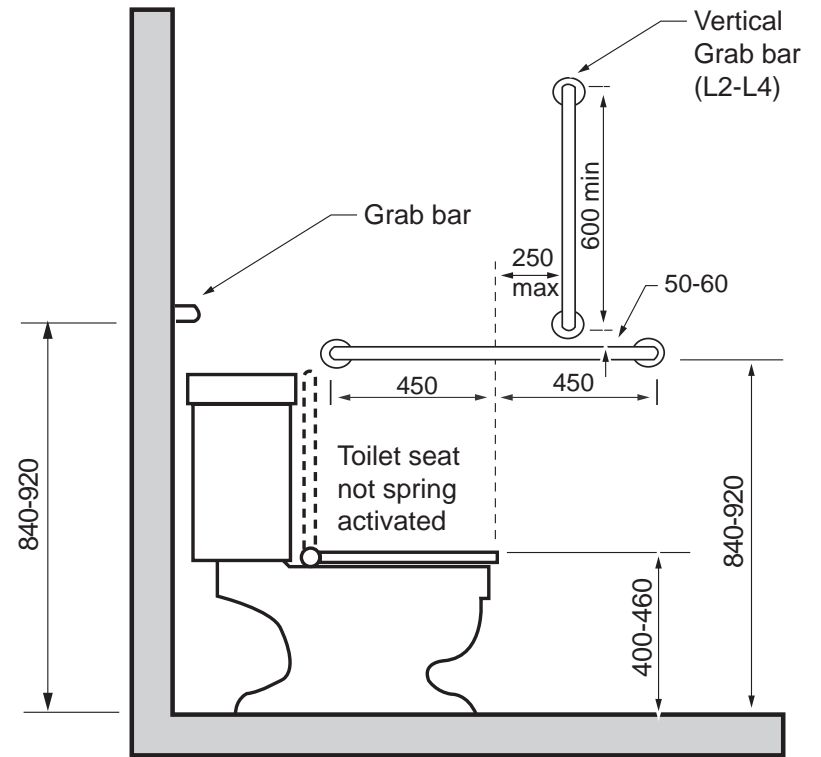


K15-K29 Toilet Stall

Appendix 7.1 - Washrooms, configurations 3



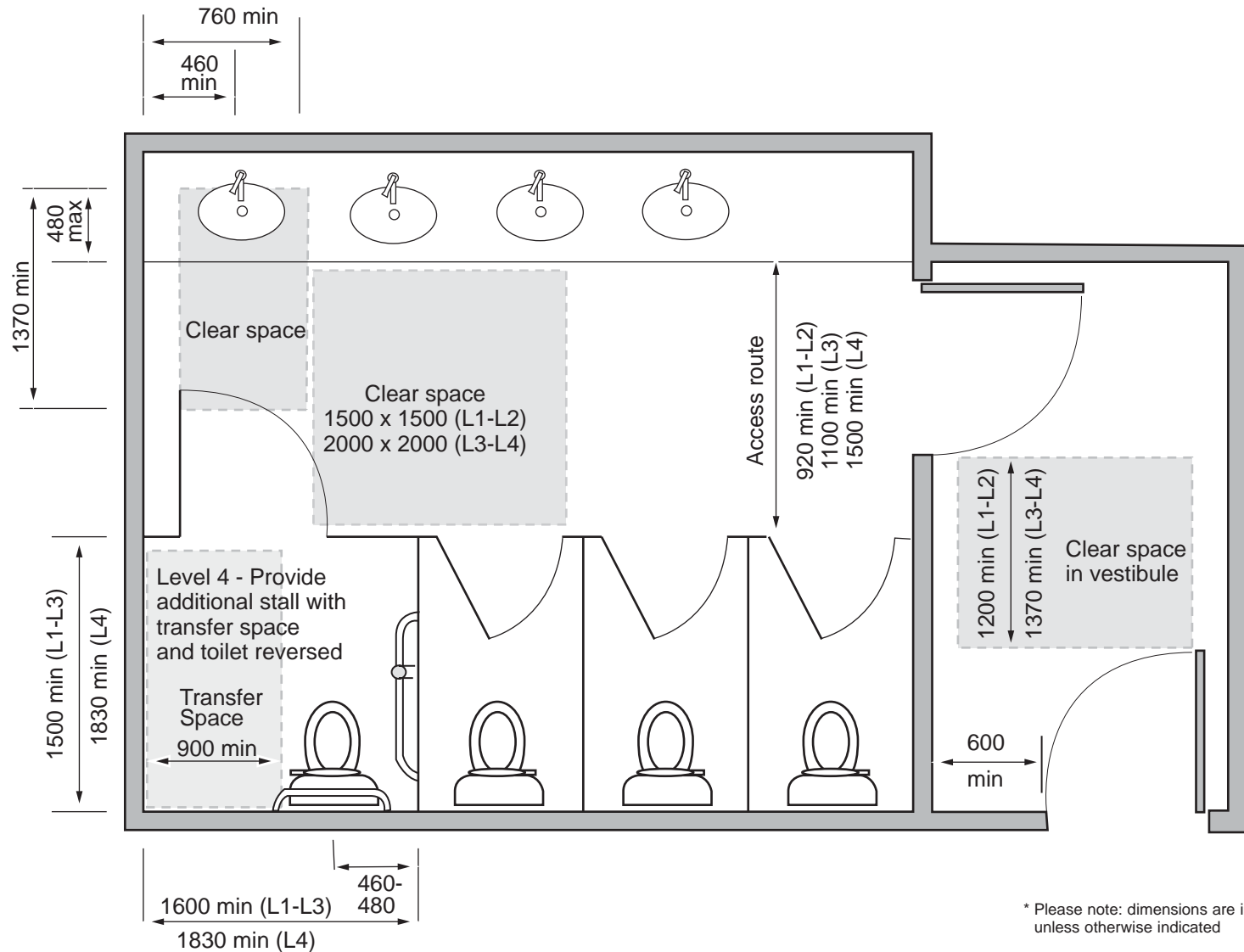
K Lavatory Configuration



K30-40 Toilet

* Please note: dimensions are in mm unless otherwise indicated

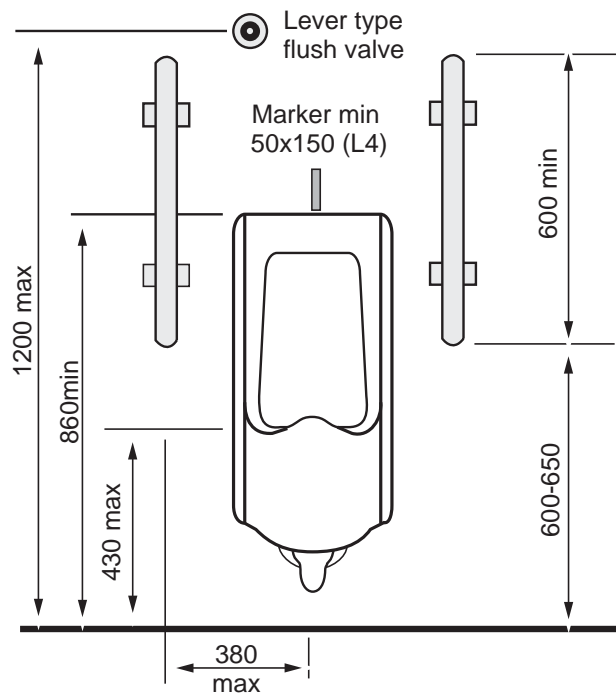
Appendix 7.1 - Washrooms, configurations 4



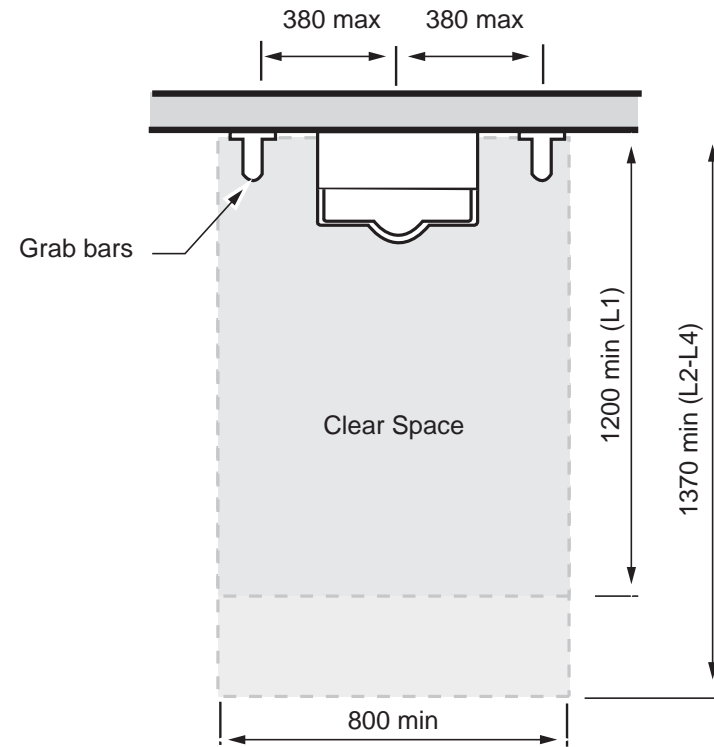
* Please note: dimensions are in mm unless otherwise indicated

K Public Washroom Configuration

Appendix 7.1 - Washrooms, configurations 5



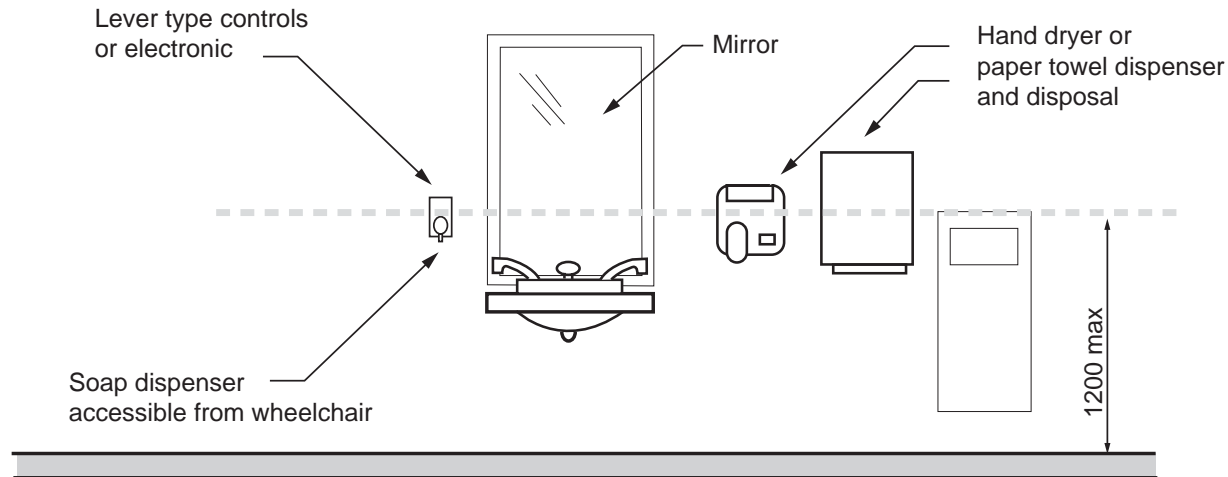
K57-66 Urinal 1



K57-66 Urinal 2

* Please note: dimensions are in mm unless otherwise indicated

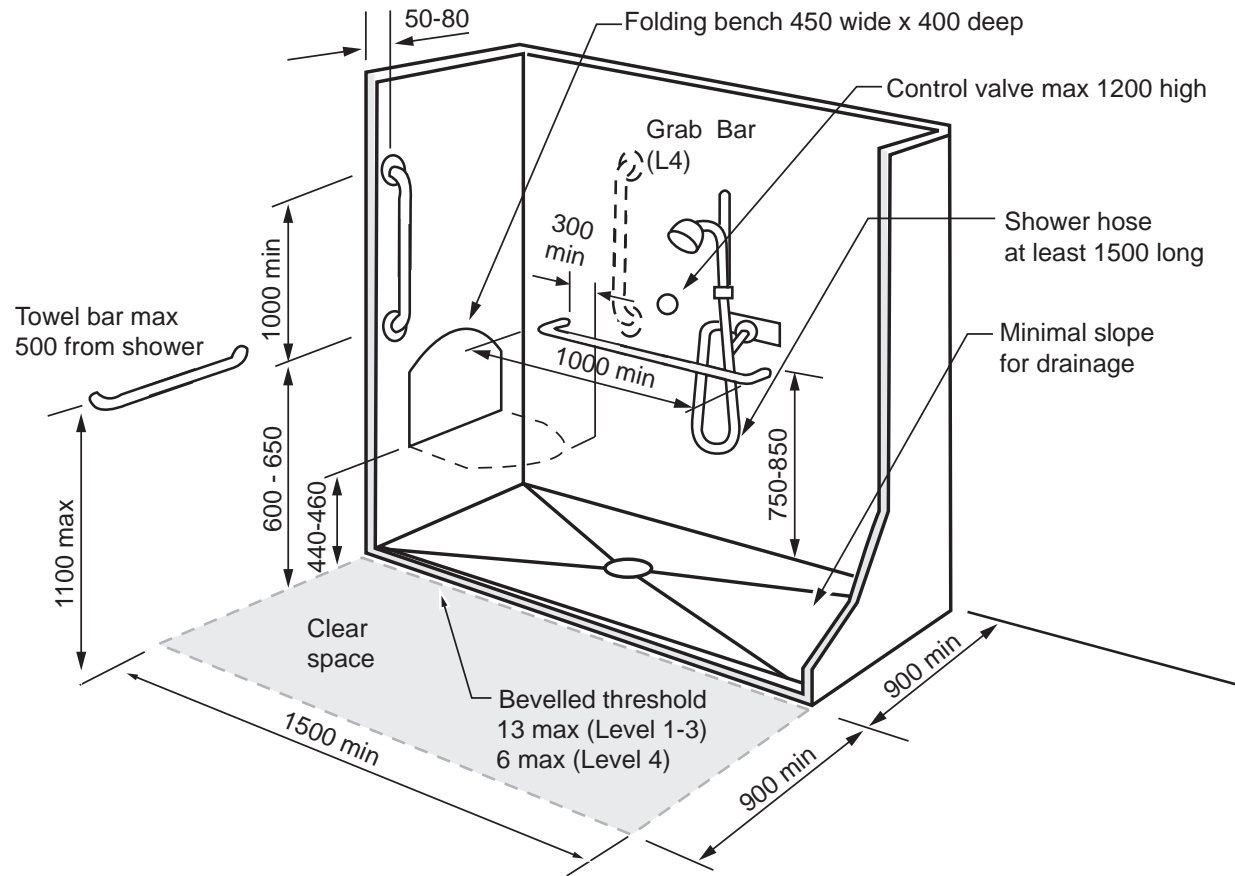
Appendix 7.1 - Washrooms, configurations 6



K Accessories

* Please note: dimensions are in mm unless otherwise indicated

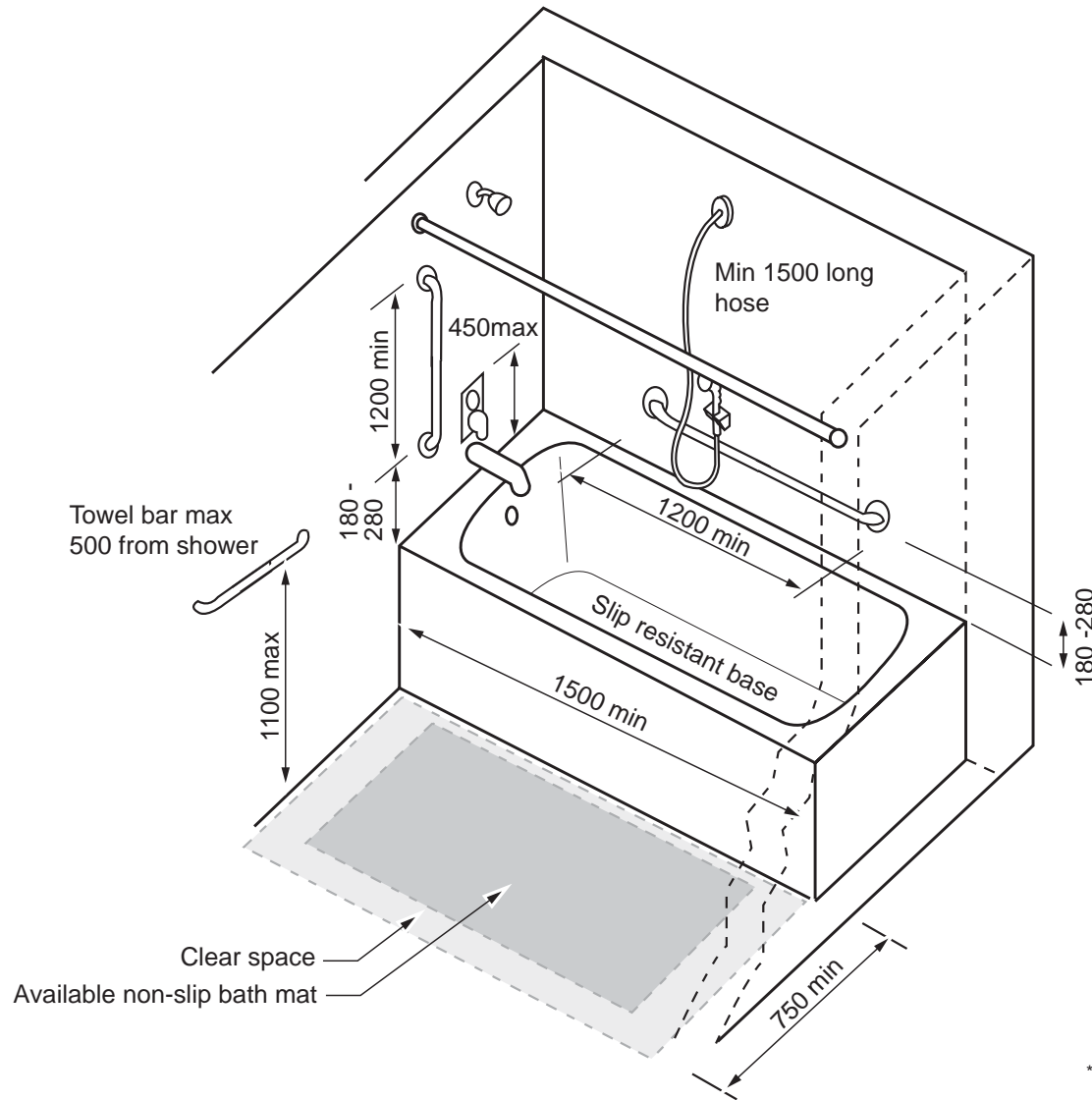
Appendix 8 - Showers



K85-96 Shower

* Please note: dimensions are in mm unless otherwise indicated

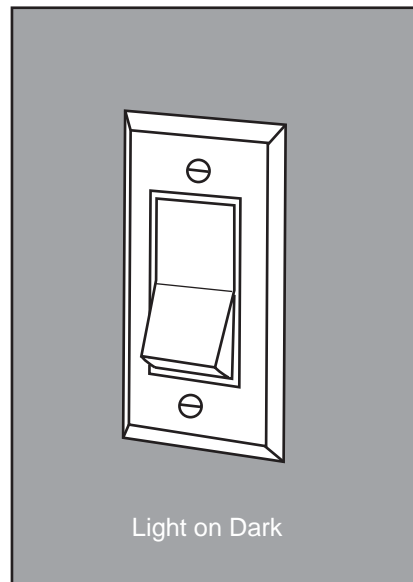
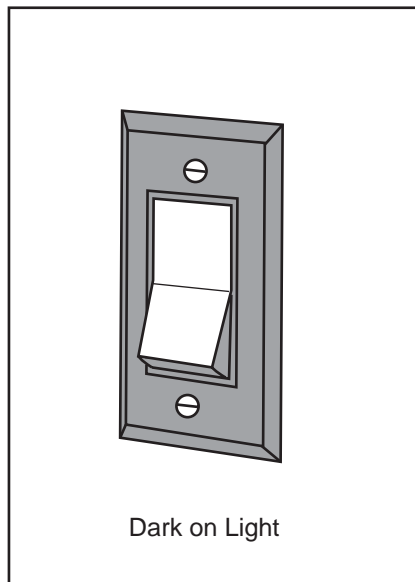
Appendix 9 - Bathtubs



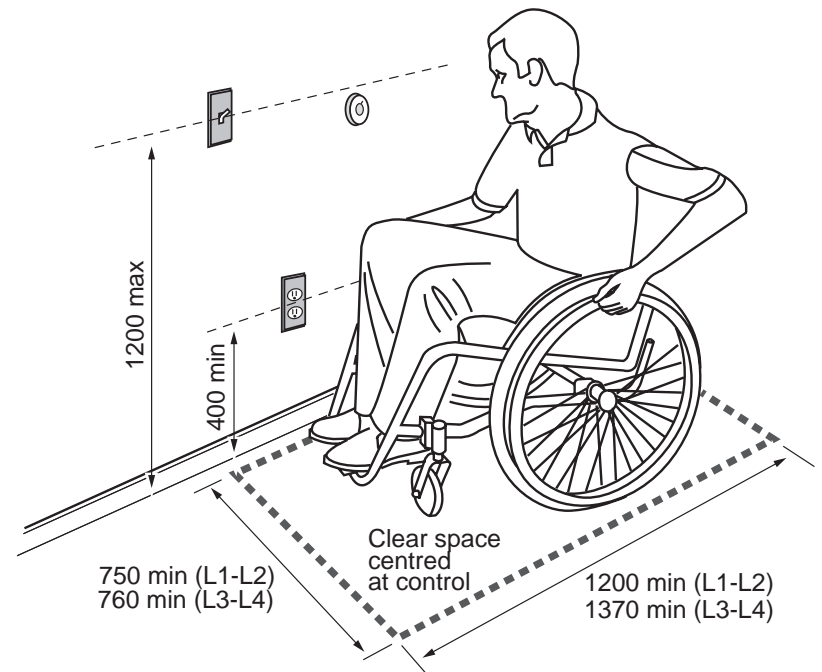
* Please note: dimensions are in mm unless otherwise indicated

K97-106 Bathtub

Appendix 10 - Electrical switches and controls



Switches and Controls Colour Contrast



Switches and Controls

* Please note: dimensions are in mm unless otherwise indicated